



Published in final edited form as:

Womens Health Issues. 2018 ; 28(5): 401–407. doi:10.1016/j.whi.2018.06.003.

The Impact of Sexual Satisfaction, Functioning, and Perceived Contraceptive Effects on Sex Life on IUD and Implant Continuation at One Year

Jessica N. Sanders,

Department of Obstetrics and Gynecology, The University of Utah, Salt Lake City

Jenny A. Higgins,

Department of Obstetrics and Gynecology and Department of Gender Studies, University of Wisconsin, Madison

Daniel E. Adkins,

Department of Sociology and Department of Psychiatry, The University of Utah, Salt Lake City

Greggory J. Stoddard,

Department of Internal Medicine, The University of Utah, Salt Lake City, Utah

Lori M. Gawron, and

Department of Obstetrics and Gynecology, The University of Utah, Salt Lake City

David K. Turok

Department of Obstetrics and Gynecology, The University of Utah, Salt Lake City

Abstract

Introduction: Contraceptives improve women's lives and public health, but many women discontinue their contraceptive method due to dissatisfaction. An underexamined aspect of contraceptive discontinuation is *sexual acceptability*, or how contraception affects sexual experiences. Investigators' aims were twofold: 1) to document changes in multiple domains of women's sexual experiences with their intrauterine device (IUD) or contraceptive implant over time, and 2) to examine whether these sexuality factors were associated with method continuation at 12 months.

Corresponding author: Jessica N Sanders, University of Utah, Department of Obstetrics and Gynecology, 30 North 1900 East, Room 2B200, Salt Lake City, UT 84132-2209, USA, P: 801-213-4096, F: 801-585-5146, Jessica.sanders@hsc.utah.edu.

Conflict of Interest: The University of Utah Department of Obstetrics and Gynecology Program in Family Planning receives research funding from Bayer Women's Health Care, Merck & Co. Inc., Teva Pharmaceuticals, Bioceptive, Contraceptive, and Medicines 360. LM Gawron served on an advisory board for Evofem, outside of the submitted work. The other authors have no conflicts of interest to report.

Human Participant Protection statement: The University of Utah Institutional Review Board (IRB) approved the HER Salt Lake study.

Study Location: Salt Lake City, Utah

ClinicalTrials.gov Identifier: NCT02734199.

Publisher's Disclaimer: This is a PDF file of an unedited manuscript that has been accepted for publication. As a service to our customers we are providing this early version of the manuscript. The manuscript will undergo copyediting, typesetting, and review of the resulting proof before it is published in its final citable form. Please note that during the production process errors may be discovered which could affect the content, and all legal disclaimers that apply to the journal pertain.

Materials and methods: We enrolled 200 eligible family planning clients and collected data at baseline and at one, three, six, and 12 months. Sexual acceptability measures included the Female Sexual Function Index (FSFI-6), the New Sexual Satisfaction Scale (NSSS), and participants' perceptions of whether their contraceptive method had had a neutral, positive, or negative effect on their sex life. Survival analysis and Cox regression with time-varying covariates related sexuality measures to method continuation over time while controlling for other relevant factors.

Results: Among 193 women who received an IUD or implant, 20% selected the copper IUD, 46% the levonorgestrel IUD, and 34% the etonogestrel implant. Ten percent discontinued their method during the year. While changes in FSFI-6 and NSSS scores were not associated with discontinuation, individuals who perceived that their method detracted from their sexual experience had significantly higher removal rates than those who reported no sexual changes or positive sexual changes (adjusted hazard ratio 8.04; 95% CI 1.53, 42.24) even when controlling for method type, bleeding changes, and a variety of covariates and controls.

Implications for practice and conclusions: Although limited by the small sample of discontinuers, we found that women's perceptions of how their method affects their sex life were associated with contraceptive continuation over time. Sexual acceptability should receive more attention in both contraceptive research and counseling.

Keywords

Contraception; intrauterine device; contraceptive implant; sexual acceptability; discontinuation

Introduction

Contraceptive methods are critical to women's* life goals and desired family size: they prevent unintended pregnancy and improve women's social and economic wellbeing (Kavanaugh & Anderson, 2013; Sonfield, Hasstedt, Kavanaugh, & Anderson, 2013). Although contraceptives must be *effective* to prevent pregnancy, they also must be *acceptable* so women and couples will use them (Peipert et al., 2011; Severy & Newcomer, 2005). Despite wide uptake and decades of research, many women are unsatisfied with their methods and stop using them after several months. For example, more than half of new-start oral contraceptive pill, patch, ring, and depot medroxyprogesterone acetate (DMPA) users discontinue their method within one year of initiation (Frost, Singh, & Finer, 2007). In the US, there is increasing uptake of intrauterine devices (IUD) and contraceptive implants, which are designed for extended use and typically have better continuation rates than the shorter acting methods above.

Researchers increasingly document that sexuality plays a role in women's contraceptive preferences, practices, and use over time (Higgins & Smith, 2016). Sexuality is a broad construct that includes domains such as sexual functioning, psychological factors, and relationship aspects. Contraceptives may affect all these sexual domains, which in turn will influence overall method acceptability—this is the foundation for the sexual acceptability

*We use the terms “women,” individuals, participants, and patients throughout this manuscript but acknowledge that not all people who need contraceptive services identify as women.

concept (Higgins & Smith, 2016). Within this emerging literature, many research participants have cited sexual interference as a reason for contraceptive discontinuation (Higgins & Davis, 2014; Higgins & Hirsch, 2008; Sanders, Graham, Bass, & Bancroft, 2001; Smith, Jozkowski, & Sanders, 2013). In one study of new-start oral contraceptive users, negative sexual side effects were more strongly associated with discontinuation than any other factor measured (Sanders et al., 2001). Despite this compelling emerging evidence base, several gaps remain. Here, we highlight two gaps particularly relevant to the current paper.

First, existing studies have taken a narrow approach to assessing sexual acceptability (Wiebe, 2010). Most often they employ measures of classic sexual functioning that solely capture physiologic aspects of sexuality (such as arousal, lubrication, orgasm, and pain), such as those on the commonly-used Female Sexual Function Index (FSFI) (Rosen et al., 2000). The FSFI and similar measures were originally developed to help identify sexual dysfunction in mid-life women experiencing sexual or other health problems. Such measures were not designed to identify contraceptive-related sexual outcomes in younger, healthy women. Moreover, other key sexual facets, including psychological factors such as sexual disinhibition, relationship aspects such as partner preferences, side effects such as vaginal bleeding, and women's perceptions of whether their methods affect sexuality, may also be important in shaping contraceptive satisfaction and use over time (Higgins & Hirsch, 2008; Higgins, Ryder, Skarda, Koepsel, & Bennett, 2015; Higgins, Sanders, Palta, & Turok, 2016).

A second gap is the lack of studies on sexual acceptability addressing IUDs and implants. IUDs and implants are the most effective forms of reversible contraception and are designed for extended use (from three to 12 years depending on device). In the literature to date, patients' most commonly-cited reasons for discontinuing these methods prior to 12 months include cramping, pain, and bleeding (Grunloh, Casner, Secura, Peipert, & Madden, 2013; Weisberg, Bateson, McGeechan, & Mohapatra, 2014). However, researchers have yet to document how sexual acceptability influences satisfaction and continuation of IUDs and implants, despite the surge of interest in these methods (Grunloh et al., 2013; Sanders, Smith, & Higgins, 2014).

This study addresses both gaps. We prospectively and longitudinally assessed a variety of sexual domains of user experiences among family planning clients initiating IUDs and implants. We then examined whether changes, if any, in these sexual domains could help predict IUD and implant continuation during the first year, all while holding constant other factors we know influence both sexuality and contraceptive continuation.

Materials and methods

Participants

We recruited 200 contraceptive clients[†] from two family planning clinics in Salt Lake City, Utah. Patients who presented for a contraceptive visit engaged in a structured counseling

[†]Cisgender women, transgender men, and gender nonconforming individuals were all eligible for participation. As we noted above, we use a variety of terms to refer to people in our study (e.g., women, individuals, participants, clients, patients) but acknowledge that not all people who need contraceptive services identify as women.

session with a clinic assistant trained in research. Patients then selected the contraceptive method of their choice per standard of care. Following the contraceptive method selection, the clinic assistant informed patients who selected one of three methods (the non-hormonal, copper T380 IUD (Cu IUD), hormonal, levonorgestrel 52mg IUD (LNG IUD), or etonogestrel contraceptive implant (ENG implant)) of the opportunity to participate in a study about the sexual aspects of IUDs and implants. We use the term sexual aspects as a catch all for both explicitly sexual factors, such as libido and sexual satisfaction, as well as domains that may not be explicitly sexual in nature but have impact on sexual experiences, pleasure, and acceptability. Eligible participants included individuals between the ages of 18 and 45 who desired to prevent pregnancy for at least one year, were fluent in English, and had a working phone number or email address at the time of enrollment. Patients were ineligible if they were sterilized, were currently pregnant or trying to get pregnant, or wanted to become pregnant in the next year. Interested and eligible individuals completed the informed consent process, then completed the enrollment survey.

We previously published information about this patient population's baseline characteristics and shorter-term sexual outcomes as measured by the FSFI-6, the NSSF, and subjective measures of impact of contraception on one's sex life (Higgins et al., 2016). In the current paper, we share data from beyond the first three months of use, including the relationship between women's sexual outcomes and contraceptive method continuation out to one year.

Study Design

Participants completed self-administered surveys at the time of enrollment (baseline) and one, three, six, and 12 months following enrollment. We created surveys using the Research Electronic Data Capture (REDCap), a secure web application for building and managing databases and collecting survey data (Harris et al., 2009). Participants completed the initial survey immediately after their contraceptive counseling and method selection (but prior to device insertion). Depending on participants' preferred contact method, research personnel either sent follow-up surveys via email or initiated a call and administered the survey over the phone. If participants had agreed to complete surveys via email, we sent reminder emails up to three times. If participants did not respond to the survey within a week of the final email, study personnel attempted contact via alternate methods, including phone, text, and additional contacts (partners, parents, roommates, or other next-of-kin contact provided by participants at baseline). Study personnel attempted up to ten contacts at each follow-up point before identifying the respondent as lost to follow up. Participants received a \$20 gift card at the time of enrollment and a \$20 electronic gift card after their six-month and 12-month surveys, for a total of \$60. The University of Utah's Institutional Review Board reviewed and approved the study (IRB#00065794).

Methods of assessment

The baseline questionnaire collected information on age, race and ethnicity, insurance status, highest level of education completed, obstetric history, and contraceptive history. Participants also reported on recent sexual activity, relationship type, and relationship length. One other important baseline control factor was baseline functional health and wellbeing, which we measured with the World Health Organization-Wellbeing Index (WHO-5), a

validated self-assessment screening tool for depression in a primary care setting (Primack, 2003).

The baseline survey also included the following two validated sexuality measures: The Female Sexual Satisfaction Index-6 (FSFI-6) (Rosen et al., 2000) and the New Sexual Satisfaction Scale (NSSS) (Stulhofer, Busko, & Brouillard, 2010). The FSFI-6 explores sexual domains of desire, arousal, lubrication, orgasm, satisfaction, and pain. The NSSS assesses multiple domains of sexuality, including sensation, awareness and focus, emotional closeness, and general activity. Both the FSFI-6 and the NSSS ask about individuals' experience during the last four weeks. To help us assess the potential sexual domains of contraceptive side effects, participants reported on menstrual bleeding patterns and menstrual-related symptoms (duration and frequency) in the month prior to enrollment by completing the menstrual symptoms/side effect questionnaire (MSQ). The MSQ assesses frequency of headache, bloating, breast tenderness, irritability, acne, cramping, weight gain, weight loss, moodiness, and depression, as well as gastrointestinal symptoms (Negriff, Dorn, Hillman, & Huang, 2009). The MSQ refers to the last 30 days and includes the following answer choices: not once, once a month, a couple of days a month, once a week, a couple of days a week, or every day.

At each follow-up survey, participants reported whether they were still using their contraceptive method and, if not, the date of discontinuation. They also updated information on recent sexual activity, current partner, relationship status, and relationship length. To assess bleeding changes, we asked, "Which of the following responses best describes your vaginal bleeding in the past 4 weeks?", with response options of "no vaginal bleeding, less bleeding than before, no change from before, and more bleeding than before." We repeated the FSFI-6, NSSS, MSQ, WHO-5, and bleeding changes questions at each time point. To capture a more subjective domain of sexual acceptability, each follow-up survey also included a question about participants' perceived impact of their current contraceptive method on their sex life in the last month ("In the last 4 weeks, would you say that your birth control or method to avoid pregnancy has: made your sex life better, made your sex life worse, or had no effect on your sex life?"). We used this measure to assess perceived sexual improvements or perceived sexual detractor related to a contraceptive method. We used the term "sexual detractor" to capture the negative impact a contraceptive method can have on an individual's sexual experiences.

Analyses

This analysis documents sexual acceptability measures' associations with contraceptive continuation at 12 months while controlling for factors that can influence sexual measures/outcomes (for example, relationship length) as well as contraceptive continuation (for example, bleeding changes). Control variables included contraceptive method type, changes in bleeding, relationship status, relationship length, age, insurance, race/ethnicity, education, and pregnancy history. This manuscript presents results on a secondary analysis. The original study was powered to detect differences in FSFI-6 scores between Cu IUD, LNG IUD, and ENG implant users. Published results of the power analyses appear elsewhere (Higgins et al., 2016).

The first step was exploratory. We used survival analysis to visualize the effects of individual variables on continuation using Kaplan-Meier (KM) survival plots (Singer & Willett, 2003). We examined all variables of primary interest (i.e., perceived impact on sexual experience, bleeding, FSFI-6, NSSS, MSQ, and WHO-5) at each time point (Cox, 1972).

Second, we used factor analyses to assess the dimensionality of the four multi-item questionnaire instruments (FSFI-6, NSSS, MSQ and WHO-5), using exploratory factor analysis (standard principle factor method with communalities equal to one) (Mulaik, 2009). After identifying the optimal factor solution for each questionnaire, we estimated factor scores using the regression scoring method (Thomson, 1956). The factor scores were then explored as predictors of interest in survival analyses (Loehlin, 2004). We compared the performance of the factor scores of sexual functioning (FSFI-6), sexual satisfaction domains (NSSS), and general health (WHO-5, MSQ) to perceived impact on sexual experience and controlled for the covariates, including contraceptive method type, bleeding changes, relationship status, and age. All data management and statistical analyses took place with Stata 14.2 Statistical Software (StataCorp, 2015).

Results

Two hundred women enrolled in the study. Seven women either withdrew prior to insertion or had a failed insertion procedure. A total of 193 women received an IUD or contraceptive implant. Of women who had an insertion, 10 (5%) reported a spontaneous IUD expulsion, and three had their device removed because they desired pregnancy. We excluded these 13 participants from the analysis since these discontinuations were not influenced by factors related to method acceptability. After these exclusions, 180 participants remained in the primary analysis sample.

At baseline, the method distribution included 33 (18%) Cu IUDs, 82 (46%) LNG IUDs, and 65 (36%) ENG implants. Across methods, participants had a mean age of 26.6 (range 18–42; SD 6) years, the majority were unmarried and not cohabitating (68%) and had at least some college or vocational training (63%), and two-thirds (65%) identified as non-Hispanic and white. Participants in each method group had similar socio-demographic characteristics. In addition, patient characteristics did not differ between participants who discontinued their baseline method over the course of the year and those without a documented removal. Table 1 displays baseline characteristics of participants according to continuation at one year.

Factor scores summarizing the FSFI-6, NSSS, MSQ, and WHO-5 were included as predictors in the Cox proportional hazard model of discontinuation. Of the variables assessed in the Cox proportional regression analysis, only two showed a statistically-significant ($p < 0.05$) association with discontinuation: perceived impact of contraceptive method on sex life (no effect, positive effect, or negative effect) and menstrual symptoms/side effect (that is, the composite factor scores for MSQ frequency). As presented in the Cox regression output of Table 2, and the KM curve plotted in Figure 1, individuals who reported that their method detracted from their sexual life at any time point in the study had substantially higher removal rates [adjusted hazard ratio (aHR) 8.04, 95% confidence interval (CI) 1.53–42.24] compared to women who reported no effect or a positive effect on

their sex life. As shown in Table 2, Models 1 and 2 show the unadjusted models only including the perceive impact on sex life and bleeding changes, which were found to be significant independent factors. Table 2 (Model 3) has a fully adjusted model and demonstrates that the association of perceived sexual detracting with discontinuation was robust ($p<0.05$) to a range of potential confounders and covariates, including contraceptive method type, bleeding changes, relationship status, age, insurance, race and ethnicity, cohabitation, education, and pregnancy history.

Table 3 compares the performance of the factor scores of sexual functioning (FSFI-6), sexual satisfaction domains (NSSS), and health (WHO-5, MSQ) to perceived impact on sexual experience in the full model, all while controlling for the covariates listed above. Model 1 shows the robust association of perceived sexual detracting to discontinuation. The FSFI, NSSS, and WHO-5 yielded null results, as shown in Models 2–4. Model 5 shows the significant positive association of menstrual-symptoms score (MSQ) with discontinuation. Finally, Model 6 includes both perceived sexual impact and MSQ in a single model, controlling for all covariates listed above. The results of this model indicate that perceived sexual detracting is robustly associated with discontinuation adjusting for menstrual symptoms (aHR 5.35; 95% CI 1.00–28.53), but the reverse is not true. That is, the MSQ factor score was no longer significantly associated with discontinuation after adjusting for perceived sexual impact ($p=0.11$). It is also of note that both perceived sexual detracting and MSQ coefficients were substantially attenuated in the final Model 6, consistent with the degree of (Spearman rank) correlation observed between these variables ($r=-0.26$; $p<0.001$). This finding shows that perceived sexual detracting and symptom/side-effect items are strongly correlated.

In sum, even when controlling for a range of factors known to affect sexuality as well as contraceptive continuation, women who perceived negative sexual effects of their methods were significantly more likely to discontinue using their IUD or implant at one year compared to women perceiving no sexual change or positive sexual changes.

Discussion

We found that some, but not all, sexual experience measures strongly affect continuation patterns. The sexual functioning, as measured by the FSFI-6, and satisfaction measures, as measured by the NSSS, were not significantly associated with method continuation, while women's *perceptions* of their contraceptive methods' sexual impacts were significantly associated with continuation even in this small sample of discontinuers. In fact, the perception that a new IUD or implant made one's sex life worse was the strongest predictor of discontinuation within the first year of use when adjusting for many other factors. This finding is notable given the wide range of examined factors in this study, including common side effects previously attributed to method dissatisfaction and discontinuation (e.g., increased bleeding and cramping). More specifically, the finding that validated sexual functioning and sexual satisfaction measures were not associated with contraceptive continuation may suggest that the FSFI-6 or the NSSS are less influential aspects of sexual acceptability in contraceptive-seeking populations. That said, this topic would benefit

greatly from studies with larger sample sizes in which participants use a wider range of methods.

Nonetheless, this study addresses some of the limitations of existing research on other reversible methods. Such limitations included cross-sectional study design and sole use of sexual functioning measures that may not be best suited for healthy contraceptive-seeking populations (Boozalis, Tutlam, Chrisman Robbins, & Peipert, 2016; Sanders et al., 2014). This study provides a much-needed longitudinal assessment of contraceptive continuation in the context of sexual acceptability and sexual experience. Study strengths include use of multiple sexuality measures and domains. Although the validated measures (FSFI-6 and NSSS) did not independently relate to discontinuation, unique domains contributed to an increasingly nuanced understanding of sexual acceptability.

Readers should interpret these findings in light of study limitations, including the potential for selection bias. As published previously, women in this cohort selecting IUDs and implants reported that the sexuality-related criteria of “not interrupting sex” and “not reducing libido” were on par with “method effectiveness” in importance when selecting a method of contraception.(Higgins et al., 2016) Although these initial findings built a strong foundation for the current study, we must acknowledge that we informed participants about the study’s focus on sexuality, and this may have biased the sample towards participants who cared more about sexual acceptability than the average contraceptive user. This limitation could be ameliorated in future research by making sexual acceptability measures a more standard part of contraceptive research and care. An additional weakness of the study includes its regional sample limited only to English speakers; future researchers should endeavor for increasingly diverse patient populations, both in the U.S. and elsewhere. Another potential limitation is the unknown impact of respondent anxiety or stress on the baseline survey, given that some patients may fear procedures such as IUD or implant insertion. Our study specifically asked that respondents think about their sexual activity with a man when answering questions. This this language may have excluded individuals whose partner does not identify as a cisgender man, or who are not exclusively heterosexual, and may both need contraceptive services and value sexual acceptability. Additionally, while we did not have inclusion criteria or survey questions on gender identity, the language used in the survey may have been inappropriate for individuals who do not identify as cisgender women. This inclusion of gender and sexual diversity would have been an improvement to the study design. Despite these limitations and our study’s relatively small sample size, our exploratory findings create a compelling basis for the notion that sexual acceptability may indeed shape contraceptive satisfaction and continuation—a heretofore critically-understudied area of contraceptive research.

Implications for Practice and Conclusions

Although definitive conclusions will require replication with larger samples involving a wider range of methods, this study provides initial evidence that domains of sexual acceptability, particularly women’s perceptions of their method’s sexual impact, are key factors in women’s continued IUD and implant use over time. Increased attention to sexual

acceptability in contraceptive research could inform more personalized approaches to education, counseling, and decision support tools in the future.

Acknowledgements:

The authors acknowledge the family planning clients who contributed their information to this research. We would also like to thank the HER Salt Lake research team (Jasmin Alcantara, Eduardo Galindo, Amy Orr, and Corinne Sexsmith); administrative support of the University of Utah Obstetrics and Gynecology Network; and the incredible clinical and research partnership of Planned Parenthood Association of Utah.

Funding: This project was funded by the Society of Family Planning Research Fund (SFPRF7–21).

Use of REDCap was provided by the Eunice Kennedy Shriver National Institute of Child Health and Development grant (8UL1TR000105 [formerly UL1RR025764] NCATS/NIH).

Team members receive support from the Eunice Kennedy Shriver National Institute of Child Health & Human Development and the Office of Research on Women's Health of the National Institute of Health, JN Sanders via Award Number K12HD085852, JA Higgins via award K12 HD055894 and 1R01HD095661–01, LM Gawron via award K12HD085816 and DK Turok via K24HD087436; Sanders, Higgins, Adkins, Stoddard and Turok also receive support 1R01HD095661–01.

The content is solely the responsibility of the authors and does not necessarily represent the official view of any of the funding agencies or participating institutions, including the Society of Family Planning, National Institutes of Health, the University of Utah or Planned Parenthood Federation of America, Inc.

Biography

Jessica N Sanders, PhD MSPH

Jessica Sanders is the Family Planning Research Director and Research Assistant Professor at the University of Utah. She received her PhD in Public Health from the University of Utah with an emphasis in Women's Health. Dr. Sanders approaches contraceptive access through a public health lens, advocating for the full range of reproductive health options through interdisciplinary academic and clinical research to ensure an evidenced-based and person-centered approach to education, policy and clinical care.

References

- Boozalis A, Tutlam NT, Chrisman Robbins C, & Peipert JF (2016). Sexual Desire and Hormonal Contraception. *Obstet Gynecol*, 127(3), 563–572. doi: 10.1097/AOG.0000000000001286 [PubMed: 26855094]
- Cox DR (1972). Regression Models and Life-Tables. *Journal of the Royal Statistical Society. Series B (Methodological)*, 34(2), 187–220.
- Frost JJ, Singh S, & Finer LB (2007). US women's one-year contraceptive use patterns, 2004. *Perspectives on Sexual and Reproductive Health*, 39(1), 48–55. doi:10.1363/3904807 [PubMed: 17355381]
- Grunloh DS, Casner T, Secura GM, Peipert JF, & Madden T (2013). Characteristics associated with discontinuation of long-acting reversible contraception within the first 6 months of use. *Obstet Gynecol*, 122(6), 1214–1221. doi: 10.1097/01.AOG.0000435452.86108.59 [PubMed: 24201685]
- Harris PA, Taylor R, Thielke R, Payne J, Gonzalez N, & Conde JG (2009). Research electronic data capture (REDCap)--a metadata-driven methodology and workflow process for providing translational research informatics support. *J Biomed Inform*, 42(2), 377–381. doi:10.1016/j.jbi.2008.08.010 [PubMed: 18929686]

- Higgins JA, & Davis AR (2014). Contraceptive sex acceptability: a commentary, synopsis and agenda for future research. *Contraception*, 90(1), 4–10. doi:10.1016/j.contraception.2014.02.029 [PubMed: 24792147]
- Higgins JA, & Hirsch JS (2008). Pleasure and power: Incorporating sexuality and inequality into research on contraceptive use and unintended pregnancy. *Am J Public Health*, 98(10), 1803–1813. doi:10.2105/AJPH.2007.115790 [PubMed: 18703457]
- Higgins JA, Ryder K, Skarda G, Koepsel E, & Bennett EA (2015). The Sexual Acceptability of Intrauterine Contraception: A Qualitative Study of Young Adult Women. *Perspect Sex Reprod Health*, 47(3), 115–122. doi: 10.1363/47e4515 [PubMed: 26280666]
- Higgins JA, Sanders JN, Palta M, & Turok DK (2016). Women's Sexual Function, Satisfaction, and Perceptions After Starting Long-Acting Reversible Contraceptives. *Obstet Gynecol*, 128(5), 1143–1151. doi:10.1097/AOG.0000000000001655 [PubMed: 27741195]
- Higgins JA, & Smith NK (2016). The Sexual Acceptability of Contraception: Reviewing the Literature and Building a New Concept. *J Sex Res*, 53(4–5), 417–456. doi:10.1080/00224499.2015.1134425 [PubMed: 26954608]
- Kavanaugh ML, & Anderson R (2013). Conception and beyond: the health benefits of services provided at family planning centers. Retrieved from New York:
- Loehlin JC (2004). *Latent variable models: an introduction to factor, path, and structural equation analysis*. Mahwah, N.J.: L. Erlbaum Associates.
- Mulaik S (2009). *Foundations of Factor Analysis, Second Edition* (Chapman & Hall/CRC Statistics in the Social and Behavioral Sciences): Chapman and Hall/CRC.
- Negriff S, Dorn LD, Hillman JB, & Huang B (2009). The measurement of menstrual symptoms: factor structure of the menstrual symptom questionnaire in adolescent girls. *J Health Psychol*, 14(7), 899–908. doi: 10.1177/1359105309340995 [PubMed: 19786516]
- Peipert JF, Zhao Q, Allsworth JE, Petrosky E, Madden T, Eisenberg D, & Secura G (2011). Continuation and satisfaction of reversible contraception. *Obstet Gynecol*, 117(5), 1105–1113. doi: 10.1097/AOG.0b013e31821188ad [PubMed: 21508749]
- Primack BA (2003). The WHO-5 Wellbeing Index performed the best in screening for depression in primary care. *ACP J Club*, 139(2), 48. [PubMed: 12954040]
- Rosen R, Brown C, Heiman J, Leiblum S, Meston C, Shabsigh R, . . . D'Agostino R, Jr. (2000). The Female Sexual Function Index (FSFI): a multidimensional self-report instrument for the assessment of female sexual function. *J Sex Marital Ther*, 26(2), 191–208. doi: 10.1080/009262300278597 [PubMed: 10782451]
- Sanders JN, Smith NK, & Higgins JA (2014). The intimate link: a systematic review of highly effective reversible contraception and women's sexual experience. *Clin Obstet Gynecol*, 57(4), 777–789. doi: 10.1097/GRF.000000000000058 [PubMed: 25264699]
- Sanders SA, Graham CA, Bass JL, & Bancroft J (2001). A prospective study of the effects of oral contraceptives on sexuality and well-being and their relationship to discontinuation. *Contraception*, 64(1), 51–58. doi:S0010-7824(01)00218-9 [pii] [PubMed: 11535214]
- Severy LJ, & Newcomer S (2005). Critical issues in contraceptive and STI acceptability research. *Journal of Social Issues*, 61(1), 45–65.
- Singer JD, & Willett JB (2003). *Applied longitudinal data analysis: Modeling change and event occurrence*: Oxford university press.
- Smith NK, Jozkowski KN, & Sanders SA (2013). Hormonal contraception and female pain, orgasm and sexual pleasure. *Journal of sexual medicine*, 11(2), 462–470. doi: 10.1111/jsm.12409 [PubMed: 24286545]
- Sonfield A, Hasstedt K, Kavanaugh ML, & Anderson R (2013). The social and economic benefits of women's ability to determine whether and when to have children. Retrieved from New York
- StataCorp. (2015). *Stata Statistical Software: Release 14*. College Station, TX: StataCorp LP.
- Stulhofer A, Busko V, & Brouillard P (2010). Development and bicultural validation of the new sexual satisfaction scale. *J Sex Res*, 47(4), 257–268. doi: 10.1080/00224490903100561 [PubMed: 19629836]
- Thomson GHS (1956). *The factorial analysis of human ability*. London: Univ. of London Press.

- Weisberg E, Bateson D, McGeechan K, & Mohapatra L (2014). A three-year comparative study of continuation rates, bleeding patterns and satisfaction in Australian women using a subdermal contraceptive implant or progestogen releasing-intrauterine system. *Eur J Contracept Reprod Health Care*, 19(1) 5–14. doi:10.3109/13625187.2013.853034 [PubMed: 24229367]
- Wiebe E (2010). Capturing the sexual side effects of hormonal contraception. *Contraception*. 2009 12;80(6):540–54. *Contraception*, 82(6), 581–581. doi: 10.1016/j.contraception.2010.04.018

Author Manuscript

Author Manuscript

Author Manuscript

Author Manuscript

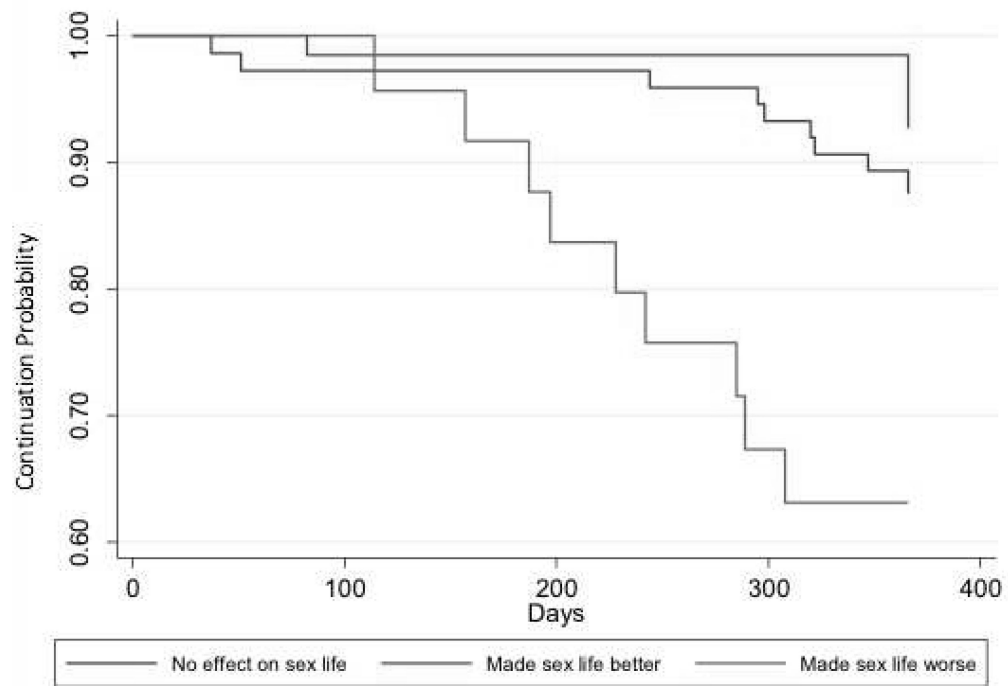


Figure 1.

Kaplan-Meier curve of removals by perceived impact of contraception on sex life.

In the unconditional, bivariate survival model, self-reporting that contraception “made sex life worse” was significantly associated with contraception discontinuation (hazard ratio 7.07; 95% confidence interval 1.80–27.76; $p=0.005$), relative to the reference category, “made sex life better.”

Table 1:

Participant characteristics stratified by contraceptive method continuation

Characteristics	Total N (%) [*]	Continuing n (%)	Discontinued n (%)	P-value [†]
Total	180 (100)	162 (90)	18 (10)	
Method chosen at baseline				
Cu IUD	33 (18)	29 (88)	4 (12)	0.899
LNG IUD	82 (46)	74 (90)	8 (10)	
ENG implant				
Highest level of education completed	65 (36)	59 (91)	6 (9)	0.682
High school or less	63 (37)	56 (89)	7 (11)	
Some college, vocational training or higher	109 (63)	99 (91)	10 (9)	
Race/ethnicity				
Non-Hispanic, white	112 (65)	99 (88)	13 (12)	0.386
Hispanic, non-white	44 (26)	42 (96)	2 (5)	
Non-Hispanic, non-white	16 (9)	14 (88)	2 (13)	0.682
Annual household income				
<\$10,000	39 (25)	36 (92)	3 (8)	
\$10,000-\$29,999	84 (55)	75 (89)	9 (11)	
\$30,000	30 (20)	26 (87)	4 (3)	
Marital status				
Single/divorced/separated	116 (68)	101 (87)	15 (13)	0.062
Married/living with partner	54 (32)	52 (96)	2 (4)	0.623
Previous pregnancy				
No	81 (47)	74 (91)	7 (9)	
Yes	92 (53)	82 (89)	10 (11)	
Baseline concern about sexual functioning				0.508
No	146 (85)	130 (89)	16 (11)	
Yes	21 (12)	20 (95)	1 (5)	
Unsure	5 (3)	5 (100)	0 (0.0)	
Any intercourse in the last 4 weeks				
No	19 (11)	15 (79)	4 (21)	0.084
Yes	153 (89)	140 (92)	13 (9)	
Age in years, mean ± SD	26.7 ± 5.8	26.4 ± 5.7	28.0 ± 5.8	0.185

^{*} Totals vary between 158 and 180 due to missing data items.

[†] P-values are for null hypothesis of no difference in percentage distribution (tested via Pearson's chi-square test) or means (tested via T-test) between continuers and discontinuers.

Copper IUD (Cu IUD); levonorgestrel IUD (LNG IUD); Etonorgestrel Contraceptive Implant (ENG Implant)

Table 2.

Cox proportional hazard models examining the association of perceived sexual impact of IUD or implant to method discontinuation

	Model 1		Model 2		Model 3	
	HR	95% CI	HR	95% CI	HR	95% CI
Perceived sexual impact						
No effect on sex life	2.52	[0.63,10.03]	2.28	[0.56,9.28]	2.61	[0.55,12.40]
Improved sex life (ref)	-	-	-	-	-	-
Worsened sex life	7.07**	[1.80,27.76]	5.67*	[1.27,25.43]	8.04*	[1.53,42.24]
Type of method						
CU IUD (ref)	-	-	-	-	-	-
LNG IUD	0.46	[0.15,1.43]	0.52	[0.13,2.04]	0.32	[0.06,1.77]
Contraceptive implant (CI)	0.34	[0.09,1.17]	0.40	[0.11,1.43]	0.18	[0.03,1.01]
Changes in bleeding						
No bleeding			0.38	[0.07,1.98]	0.22	[0.04,1.26]
Decreased bleeding (ref)			-	-	-	-
No change in bleeding			0.57	[0.06,5.37]	0.58	[0.05,7.26]
Increased bleeding			0.95	[0.23,3.93]	1.11	[0.22,5.59]
Relationship length						
Less than 3 months					6.12	[0.93,40.37]
3 to 6 months (ref)					-	-
6 to 12 months					0.87	[0.12,6.32]
1 to 2 years					2.44	[0.37,16.00]
2 to 3 years					3.01	[0.30,30.81]
More than 3 years						
Age category						
18–19					1.29	[0.14,12.20]
20–24 (ref)					-	-
25–29					0.42	[0.07,2.31]
30–34					0.65	[0.13,3.27]
35+					0.43	[0.06,2.99]
Insurance status						
No Insurance (ref)					-	-
Any insurance					0.83	[0.44,1.58]
Race/ ethnicity						
Non-Hispanic,non-white(ref)					-	-
Hispanic, non-white					0.25	[0.05,1.34]
Non-Hispanic,non-white, other					0.66	[0.07,6.02]
Relationship status						
Single (ref)					-	-
Married/cohabiting					0.33	[0.07,1.62]
Educational attainment						

	Model 1		Model 2		Model 3	
	HR	95% CI	HR	95% CI	HR	95% CI
High school graduate or less					0.84	[0.28,2.52]
More than high school (ref)						
Ever pregnant					3.13	[0.74,13.16]
Observations	576		576		576	
N	161		161		161	
Discontinuations	18		18		18	
Risk	50376		50376		50376	
Log likelihood	-81.26		-80.29		-73.19	

*
p<0.05

**
p<0.01

p<0.001

Table 2 describes the unadjusted and adjusted cox proportional hazard models. Model 1 includes the perceived sexual impact and device selected at baseline; Model 2 includes perceived sexual impact, device selected at baseline, and bleeding changes; Model 3 is a fully adjusted model that controls for additional covariates that may impact continuation.

Table 3.

Cox proportional hazard models comparing self-reported sexual satisfaction with measure factor scores for sexual experience (FSFI, NSSS), menstrual symptoms (MSQ), and general health (WHO-5) questionnaires

	Model 1			Model 2			Model 3			Model 4			Model 5			Model 6		
	HR	95% CI		HR	95% CI		HR	95% CI		HR	95% CI		HR	95% CI		HR	95% CI	
Improved sex life (ref)	-	-																
No effect on sex life	3.29	[0.66,16.36]														2.15	[0.44,10.58]	
Worsened sex life	7.64 *	[1.38,42.30]														5.36 *	[1.00,28.53]	
FSFI factor score				0.70	[0.40,1.23]													
NSSS factor score							0.77	[0.47,1.26]										
WHO-5 factor score										0.75	[0.40,1.40]							
MSQ factor score													2.73 **	[1.29,5.80]		1.97	[0.86,4.48]	
Observations	571			571			571			571			571			571		
N	160			160			160			160			160			160		
Discontinuations	17			17			17			17			17			17		
Risk	50191			50191			50191			50191			50191			50191		
Log likelihood	-69.23			-71.57			-71.79			-71.89			-68.67			-67.4		

* p<0.05

**

p<0.01

p<0.001

Note: Each model controls for contraception method, bleeding, relationship status, age, insurance, race/ethnicity, cohabitation, education, previous pregnancy. HR-Hazard Ratio; 95% CI-95% Confidence Interval; NSSS - New Sexual Satisfaction Scale; FSFI - Female Sexual Function Index; WHO-5 - WHO Well-Being Index; MSQ - Menstrual Symptom Questionnaire