

Published in final edited form as:

J Psychiatr Res. 2014 February ; 49: 96–101. doi:10.1016/j.jpsychires.2013.11.004.

Brain-Derived neurotrophic factor levels in late-life depression and comorbid mild cognitive impairment: a longitudinal study

Breno Satler Diniz, M.D., Ph.D., Charles F. Reynolds III, M.D., Amy Begley, M.A., Mary Amanda Dew, Ph.D., Stewart J. Anderson, PhD, Francis Lotrich, M.D., Ph.D., Kirk I. Erickson, Ph.D., Oscar Lopez, M.D., Howard Aizenstein, MD, PhD, Etienne L. Sibille, Ph.D., and Meryl A. Butters, Ph.D.

¹Department of Mental Health, Faculty of Medicine, Federal University of Minas Gerais, Belo Horizonte, MG - Brazil (BSD)

²Department of Psychiatry, University of Pittsburgh School of Medicine, Pittsburgh, PA – USA (CFR, AB, MAD, FL, MAB)

³Department of Biostatistics, University of Pittsburgh Graduate School of Public Health. Pittsburgh, PA – USA (SA)

© 2013 Elsevier Ltd. All rights reserved.

Corresponding author: Breno Satler Diniz, Department of Mental Health, Faculty of Medicine, Federal University of Minas, Gerais, Belo Horizonte, MG, Brazil, brenosatler@gmail.com.

Publisher's Disclaimer: This is a PDF file of an unedited manuscript that has been accepted for publication. As a service to our customers we are providing this early version of the manuscript. The manuscript will undergo copyediting, typesetting, and review of the resulting proof before it is published in its final citable form. Please note that during the production process errors may be discovered which could affect the content, and all legal disclaimers that apply to the journal pertain.

Funding and disclosures:

Breno Satler Diniz: receives research support from John A. Hartford Foundation and from Intramural Grant from the Federal University of Minas Gerais.

Mary Amanda Dew: none to declare

Charles F. Reynolds III: Dr. Reynolds reports receiving pharmaceutical support for NIH-sponsored research studies from Bristol-Myers Squibb, Forest, Pfizer, and Lilly; receiving grants from the National Institute of Mental Health, National Institute on Aging, National Center for Minority Health Disparities, National Heart Lung and Blood Institute, Center for Medicare and Medicaid Services (CMS), Patient Centered Outcomes Research Institute (PCORI), the Commonwealth of Pennsylvania, the John A Hartford Foundation, Clinical and Translational Science Institute (CTSI), and the American Foundation for Suicide Prevention; and serving on the American Association for Geriatric Psychiatry editorial review board. He is the co-inventor (Licensed Intellectual Property) of Psychometric analysis of the Pittsburgh Sleep Quality Index (PSQI) PRO10050447 (PI: Buysse).

Stewart Anderson: none to declare

Amy Begley: none to declare

Francis Lotrich: none to declare

Kirk I. Erickson: receives support from the National Institute of Diabetes and Digestive and Kidney Diseases.

Meryl A. Butters: receives support from the National Institute of Mental Health (NIMH) and National Institute on Aging (NIA). She is a consultant to GlaxoSmithKline for whom she provides interpretation of neuropsychological data.

Etienne L. Sibille: none to declare.

Howard Aizenstein:

Oscar Lopez: Dr Lopez served as consultant for Lilly, Baxter, Grifols, and Cognoptix.

Breno Satler Diniz: Study design, data analysis, interpretation of results and drafting the manuscript.

Charles F. Reynolds III: Study design, interpretation of results and drafting the manuscript.

Mary Amanda Dew: Interpretation of results and drafting the manuscript.

Stewart Anderson: Data analysis, interpretation of results and drafting the manuscript.

Amy Begley: Data analysis, interpretation of results and drafting the manuscript.

Francis Lotrich: Data analysis, interpretation of results and drafting the manuscript.

Oscar Lopez: Study design, interpretation of results.

Etienne L. Sibille: Study design, interpretation of results.

Howard Aizenstein: Study design, interpretation of results.

Kirk I. Erickson: Interpretation of results and drafting the manuscript.

Meryl A. Butters: Study design, interpretation of results and drafting the manuscript.

⁴Department of Neurology, University of Pittsburgh School of Medicine, Pittsburgh, PA – USA (OL)

⁵Alzheimer's Disease Research Center, University of Pittsburgh, Pittsburgh, PA – USA (OL)

⁶Department of Psychology, University of Pittsburgh, Pittsburgh, PA – USA (KIE)

⁷Center for the Neural Basis of Cognition, University of Pittsburgh, Pittsburgh, PA – USA (KIE)

Abstract

Changes in brain-derived neurotrophic factor (BDNF) level are implicated in the pathophysiology of cognitive decline in depression and neurodegenerative disorders in older adults. We aimed to evaluate the longitudinal association over two years between BDNF and persistent cognitive decline in individuals with remitted late-life depression and Mild Cognitive Impairment (LLD+MCI) compared to either individuals with remitted LLD and no cognitive decline (LLD+NCD) or never-depressed, cognitively normal, elderly control participants. We additionally evaluated the effect of double-blind, placebo-controlled donepezil treatment on BDNF levels in all of the remitted LLD participants (across the levels of cognitive function). We included 160 elderly participants in this study (72 LLD+NCD, 55 LLD+MCI and 33 never-depressed cognitively normal elderly participants). At the same visits, cognitive assessments were conducted and blood sampling to determine serum BDNF levels were collected at baseline assessment and after one and two years of follow-up. We utilized repeated measure, mixed effect models to assess: (1) the effects of diagnosis (LLD+MCI, LLD+NCD, and controls), time, and their interaction on BDNF levels; and (2) the effects of donepezil treatment (donepezil vs. placebo), time, baseline diagnosis (LLD+MCI vs. LLD+NCD), and interactions between these contrasts on BDNF levels. We found a significant effect of time on BDNF level ($p=0.02$) and a significant decline in BDNF levels over 2 years of follow-up in participants with LLD+MCI ($p=0.004$) and controls ($p=0.04$). We found no effect of donepezil treatment on BDNF level. The present results suggest that aging is an important factor related to decline in BDNF level.

Keywords

BDNF; Late-Life Depression; Mild Cognitive Impairment; Elderly; Pathophysiology; Dementia

Introduction

Late-life depression (LLD) is a common psychiatric disorder in older adults. It is associated with significant functional and cognitive impairment and is an important risk factor for dementia, in particular Alzheimer's disease (AD) and Vascular Dementia (VaD) (Diniz et al., 2013). Persistent cognitive impairment is common even after successful antidepressant treatment and may be a marker of risk for progression to dementia (Bhalla et al., 2009; Lee et al., 2007). In a recent double-blind randomized clinical trial, our group evaluated whether long-term donepezil treatment was associated with cognitive improvement in patients with LLD (Reynolds et al., 2011). We found that patients with remitted LLD and MCI who were treated with donepezil showed significant improvement on memory performance and reduced risk of Dementia/AD over two years compared with patients on placebo. Similar findings have been reported by others, suggesting that donepezil treatment can have a protective effect against cognitive impairment and progression to dementia in LLD (Lu et al., 2009).

The pathophysiologic mechanisms of cognitive impairment in LLD are not clear, but may involve cerebrovascular burden, dysfunction of the Hypothalamus-Pituitary-Adrenal (HPA) axis, inflammatory status, and decreased neurotrophic support (Butters et al., 2008; Caraci et

al., 2010). BDNF is the most abundant neurotrophic factor in the brain. It is involved in several functions including the maintenance of neuronal homeostasis, synapse development and strengthening via glutamate activity-dependent pathways, cell proliferation, memory consolidation and resilience against insults (Tapia-Arancibia et al., 2008). BDNF is also found in the periphery (e.g. serum and platelets) and can be assessed in relation to psychiatric disorders and brain function (Teixeira et al., 2010). Serum BDNF levels can be modulated by antidepressant pharmacotherapies (Sen et al., 2008). Treatment with cholinesterase inhibitors (e.g., donepezil), which are approved for the treatment of AD, can also modulate peripheral BDNF levels. In a preliminary, open study, including a small sample of 19 subjects diagnosed with AD and treated with 10 mg of Donepezil over 15 months, Leyhe & colleagues (2009) showed a significant increase in serum BDNF levels after donepezil treatment. The results suggest increasing increments in BDNF levels as a possible mechanism of action of donepezil (Leyhe et al., 2008).

Changes in the BDNF system has been associated with LLD. The presence of the Met allele in position 66 of the BDNF gene confers an increased risk of LLD, and is associated with greater white matter hyperintensity lesion burden in these individuals (Taylor et al., 2008; Pei et al., 2012). Reduced BDNF levels may be a putative mechanism of cognitive decline in LLD, as a similar pattern of changes in BDNF levels is observed among LLD, MCI and AD patients (Diniz et al., 2010; Diniz et al., 2011). In addition, there is evidence that BDNF is negatively correlated with age-related reduction in hippocampal volume (Erickson et al., 2010). Nonetheless, the cross-sectional design of these studies limits the ability to interpret the effect of LLD, cognitive impairment, and aging on BDNF levels. To date no study has evaluated whether persistent cognitive impairment in individuals with remitted LLD is associated with lower BDNF levels, or whether BDNF continues to decline over time. A better understanding of the relationship between changes in BDNF and cognitive function in LLD is important to develop more specific treatments for these associated conditions.

We aimed therefore to evaluate the association between BDNF and persistent cognitive decline in participants with remitted LLD (LLD+MCI) compared to either participants with remitted LLD and no cognitive decline (LLD+NCD) and to healthy control subjects over two years of follow-up. We further evaluated the impact of long-term donepezil treatment on BDNF levels in these patients. We hypothesized that BDNF would be reduced in subjects with LLD+MCI and would decline faster in these subjects compared to LLD+NCD and to healthy controls. Additionally, we hypothesized, based on prior preliminary data (Leyhe et al., 2008), that long-term donepezil treatment would significantly increase BDNF levels in everyone.

Methods

This study is based upon a previously published double-blind, randomized, placebo-controlled clinical trial to evaluate the effect of donepezil on cognitive performance, instrumental activities of daily living and prevention of depressive episode recurrence in patients with recently remitted LLD. Patients' recruitment, methodology, and primary outcomes of this clinical trial have been reported by Reynolds et al. (2011).

In brief, a total of 299 older adults were initially screened for this study. Two hundred twenty qualified for participation and provided consent, 158 responded to open antidepressant pharmacotherapy and completed assessment for the randomized controlled trial, and of these, 130 eligible participants agreed to randomization to receive donepezil or placebo in addition to continuing two years of maintenance antidepressant medication after remission of the index depressive episode. Following antidepressant response during the first phase, participants had baseline neuropsychological and cognitive instrumental

activities of daily living (C-IADL) assessment (baseline assessment) and independent ascertainment of cognitive status (normal, MCI, dementia) by the University of Pittsburgh Alzheimer's Disease Research Center (ADRC).

At baseline, 73 of 130 LLD participants who had responded to antidepressant treatment were cognitively normal and 57 were found to have MCI. The participants were then randomized to receive placebo or donepezil treatment and had repeated neuropsychological and C-IADL assessment 12 and 24 months later. Donepezil / placebo treatment was provided throughout the 24 month duration of the trial. Of note, the randomization process was stratified by cognitive status (No Cognitive Disorder vs. Mild Cognitive Impairment); thus, the placebo and donepezil treatment arms were balanced in the proportion of participants with and without cognitive impairment at baseline.

In order to provide a benchmark to assess change over time in depressed participants, 36 older adults with no evidence of lifetime cognitive or psychiatric disorders were included in a control group. They had the same clinical and neuropsychological and C-IADL evaluations as participants with depression in the clinical trial at 12 and 24 month follow-up.

Blood sampling and BDNF analysis

Blood samples from depressed and control subjects were drawn in the morning at baseline (and prior to randomization in the case of LLD participants), 12 and 24 month assessments. Serum was separated by centrifugation and serum aliquots were frozen and stored at -80°C until analysis. Serum BDNF levels were measured using a high-sensitivity quantitative enzyme immunoassay (ELISA) (R&D Systems, Minneapolis, MN). All samples were measured in duplicate and the average intra-assay and inter-assay coefficients of variation were 6.2% and 11.3%, respectively.

Statistical analysis

We followed the intention-to-treat principle for all analyses. Thus, all randomized LLD participants and control subjects were considered in the analyses if they had at least one BDNF measurement available and were analyzed according to the intervention group that the subjects were assigned at the time of randomization (e.g. maintenance phase of the trial (in the case of LLD participants)). Therefore, the analysis focused on data from the 160 participants who had a BDNF measurement (72 LLD+NCD, 55 LLD+MCI and 33 controls). There were no differences in socio-demographic and clinical variables between participants with and without baseline BDNF levels (*data not shown*). For all analyses, we utilized a repeated measure, mixed model analysis with an unstructured covariance structure (Laird and Ware, 1982). The mixed model analysis allows for missing data and the modeling uses all available data for the estimates. Linear contrasts were used to examine patterns of change over time.

In the first set of analyses, we evaluated the association between persistent cognitive impairment and changes in BDNF level over two years of follow-up. We tested the main effect of baseline diagnosis (LLD+MCI, LLD+NCD, controls) and time (baseline, 12 months and 24 months of follow-up), and diagnosis X time interaction on BDNF levels. We carried out an additional exploratory analysis to evaluate the pattern of change on BDNF levels on the subjects whose cognitive diagnosis did not change during course of follow-up.

In the second set of analyses, we evaluated the effect of long-term donepezil treatment on BDNF in participants with remitted LDD. We tested the main effect of treatment (donepezil vs. placebo), time (baseline, 12 months and 24 months of follow-up), and cognitive status at baseline (LLD+MCI, LLD+NCD), and all interactions between these contrasts. For this

analysis, we included only the LLD participants (LLD+NCD, 72 subjects; LLD+MCI, 55 subjects).

We used the SPSS v. 14 for Windows (SPSS, Chicago, IL) and SAS version 9.3 statistical software (SAS Institute, Inc, Cary, North Carolina) for all analysis. Statistical significance was set at $\alpha < 0.05$.

Results

Table 1 shows baseline (that is, following remission of depression, at the point of randomization to donepezil or placebo) socio-demographic, depressive symptoms and cognitive performance according to diagnostic groups. As expected, participants with LLD +MCI had significantly worse scores on the Mini-Mental State Examination (MMSE) and the Dementia Rating Scale (DRS) with less years of education than both LLD +NCD and controls. Both LLD groups had higher depressive scores than the control subjects at time of baseline BDNF measurement with LLD+MCI having highest scores. LLD+NCD were younger than the LLD+MCI and controls.

Baseline BDNF levels did not differ among diagnostic groups both looking at unadjusted and adjusted models controlling for baseline age and HDRS scores given that participants differed in age and HDRS scores at baseline ($F(2,148)=1.97$, $p=0.14$, and $F(2,146)=1.64$, $p=0.20$ respectively). Repeated measure, mixed model analyses were run using baseline age and HDRS scores as covariates (Table 2, model 1). Neither age nor HDRS scores were significant covariates. We found a main effect for time on BDNF level; but no significant effect of diagnosis, or interaction between diagnosis and time. Figure 1A shows the BDNF level over time for each of the 3 groups.

As the diagnosis of MCI may change over a short period of time, with some participants resuming normal cognitive performance, while others with no evidence of cognitive impairment showing cognitive decline (Diniz et al., 2009), we focused the analysis only on participants who retained the same diagnosis at all observable time points.. These analyses showed that mean BDNF levels decreased in LLD+MCI participants between baseline and 24 months of follow-up (estimated difference = -6.04 ($se=2.06$), $t(114)=2.93$, $p=0.004$), and in healthy controls (estimated difference= 3.77 ($se=1.82$), $t(114)=2.07$, $p=0.04$). We did not find a significant change in mean BDNF level in LLD+NCD between baseline and 24 months of follow-up (estimated difference = 0.15 ($se=1.25$), $t(114)=-0.12$, $p=0.90$). Interaction between diagnosis and time was not significant $F(4,114)=1.99$, $p=0.10$.(Figure 1B). We did additional analyses in the whole sample examining whether an individual's trajectory of BDNF change correlated with his/her trajectory of cognitive change. We did not find a significant correlation between individual changes in BDNF and cognitive changes over one year ($\rho=0.07$, $p=0.48$, $n=100$) nor over two years of follow-up ($\rho=0.13$, $p=0.24$, $n=89$).

Effect of donepezil treatment on BDNF level in remitted LLD participants

In the parent study, participants with remitted LLD participated in a double-blind placebo controlled clinical trial to evaluate whether donepezil treatment improves cognitive performance and reduces progression to dementia. Mixed model analysis for repeated measures tested for the main effects of donepezil treatment (donepezil vs. placebo), time, baseline diagnosis (LLD+MCI vs. LLD+NCD), and the interactions between these terms on BDNF levels. We also included baseline age and HDRS scores as covariates in this analysis. Neither age nor HDRS scores were significant covariates. There were no significant main effects of treatment, time, baseline diagnosis or interactions on BDNF levels (Table 2, model 2).

Discussion

This is the first study to describe longitudinal changes in serum BDNF levels in both older adults with LLD and healthy control subjects. We found that BDNF levels significantly decline over 2 years of follow-up in the whole sample. Exploratory analyses showed that the decline in BDNF levels was largely driven by participants with LLD+MCI and controls. On the other hand, we did not find a significant effect on BDNF levels after long-term donepezil treatment. Overall, the present findings suggest that aging is an important factor related to the decline of BDNF levels.

Cross-sectional studies suggest that BDNF levels are negatively correlated with age-related hippocampal volume changes and cognitive impairment (Erickson et al., 2010; Lee et al., 2007). Previous studies have consistently shown a significant reduction of BDNF levels in subjects with neurodegenerative disorders, such as Alzheimer's disease and amnesic mild cognitive impairment (Forlenza et al., 2010; Lee et al., 2009). Recent studies suggest that the molecular changes associated with depression may lead to accelerated brain aging and changes in the expression of the BDNF gene might play an important role in this process (McKinney and Sibille, 2013). In a recent *post-mortem* study, Douillard-Guilloux et al. (2013) found that the expression of BDNF mRNA was negatively correlated with age; moreover, the mean reduction was significantly higher in participants with history of major depression. In addition, lower BDNF expression is found in the brain of subjects with Alzheimer's disease, in particular in areas with high Tau protein levels (Murer et al., 1999).

BDNF significantly declined over time in healthy controls and did so with higher intensity in participants with LLD+MCI. Such declines may suggest that changes in the neurotrophic system are related to the aging process, but may be accelerated or intensified in subjects with LLD and persistent cognitive impairment, possibly indicating the emergence of neurodegenerative changes in the latter group.

In addition, we evaluated the effect of long-term donepezil treatment on BDNF levels in participants with LLD. Contrary to our hypothesis, we observed no long-term donepezil treatment effect on serum BDNF levels. In the primary analysis of this clinical trial, patients with LLD and comorbid MCI showed a significant improvement on memory performance over two years (Reynolds et al., 2011). In the light of the present results, we hypothesize that memory improvement after donepezil treatment is not due to changes in BDNF. Nonetheless, donepezil can modulate BDNF-related cascades by mechanisms other than by directly increasing serum BDNF levels. For example, donepezil can rapidly induce the phosphorylation of the neurotrophin receptors TrkA and TrkB and increase the phosphorylation of transcription factor CREB in mature mouse hippocampal neurons; these effects are independent of the increased synthesis and release of BDNF (Autio et al., 2011). The activation of TrkB and CREB, by phosphorylation, acts as the main down-stream effector of BDNF functions in neurons. Therefore, donepezil treatment can significantly modulate BDNF-related cascades without directly affecting BDNF protein synthesis and release. On the other hand, the present results are consistent with the evidence that donepezil and other acetylcholinesterase inhibitors mainly have effects on symptomatic, cognitive, and behavioral expression of dementia (both vascular and AD) and MCI (Doody et al., 2001; Erkinjuntti et al., 2002; Petersen et al., 2005).

The pathophysiology of cognitive impairment may involve changes in several biologic cascades other than BDNF and changes in individual cascades may have small overall effects on cognitive impairment in LLD (Butters et al., 2008; Caraci et al., 2010). Thus, the positive effect of donepezil on memory and global cognitive performance reported in the primary analysis of this clinical trial (Reynolds et al., 2011) may be secondary to the effects

of this drug on biologic cascades other than BDNF. Additional studies are needed to disentangle the biologic mechanisms by which donepezil improves cognitive performance in patients with LLD and cognitive impairment.

The present study has several limitations. The original trial was not designed to evaluate the effects of donepezil on serum BDNF levels, and thus the present findings should be considered more exploratory or hypothesis-generating than confirmatory or hypothesis-testing. We also observed a high dropout rate in the LLD+MCI group that might have influenced the present results. Furthermore, given the large number of tests, there is a high chance of false positive findings. In addition, we did not evaluate BDNF levels prior to antidepressant treatment. Thus, we cannot reliably state that individuals with LLD and cognitive impairment after depressive episode remission had lower BDNF levels compared to patients with LLD and no cognitive impairment. Finally, some studies have failed to show a significant correlation between BDNF levels in the CNS and in the periphery in older individuals (Laske et al., 2007). Hence, we need to be cautious about interpreting the extent to which changes in serum BDNF may reflect changes in brain levels of BDNF. Nonetheless, the positive correlations observed between serum BDNF levels and both cognitive and depressive symptoms in the elderly are in line with other research using BDNF serum as a marker of brain integrity (Erickson et al., 2010). The large sample size, the longitudinal measures of BDNF levels, and the inclusion of healthy controls in the analysis are major strengths of the present study.

In conclusion, serum BDNF levels significantly decline over time in healthy controls and in participants with LLD and persistent cognitive impairment, though the intensity of decline is greater in the latter group. Additionally, we did not find a significant effect of long term donepezil treatment on serum BDNF concentration, suggesting that the benefit of donepezil on memory and cognitive performance is not secondary to the modulation of BDNF in these individuals. Further studies are necessary to disentangle the biologic mechanisms by which donepezil improves cognitive performance in patients with LLD, with the aim of discovering new biologic targets for the treatment of cognitive impairment in individuals with LLD.

Acknowledgments

This work was supported by grants R01 MH043823 (Dr Reynolds), R01 MH037869 (Dr Reynolds), P30MH071944 (Dr Reynolds), P30 MH090333 (Dr Reynolds), UL1 RR024153 (Dr Steven Reis), UL1TR000005 (Dr Steven Reis), R01MH072947 (Dr Butters), R01MH080240 (Dr Butters), P50AG05133 (Drs DeKosky and Lopez) from the National Institutes of Health and by John A. Hartford Foundation grant (Dr Diniz) and the UPMC Endowed Chair in Geriatric Psychiatry (Dr Reynolds). Forest Laboratories donated escitalopram oxalate, Eli Lilly and Co donated duloxetine hydrochloride, Bristol-Myers Squibb donated aripiprazole, and Pfizer/Eisai donated donepezil and matching placebo.

The Funding Agencies did not have any role in generating the study hypothesis, data analysis and interpretation, writing the manuscript and in the final decision to submit it for publication.

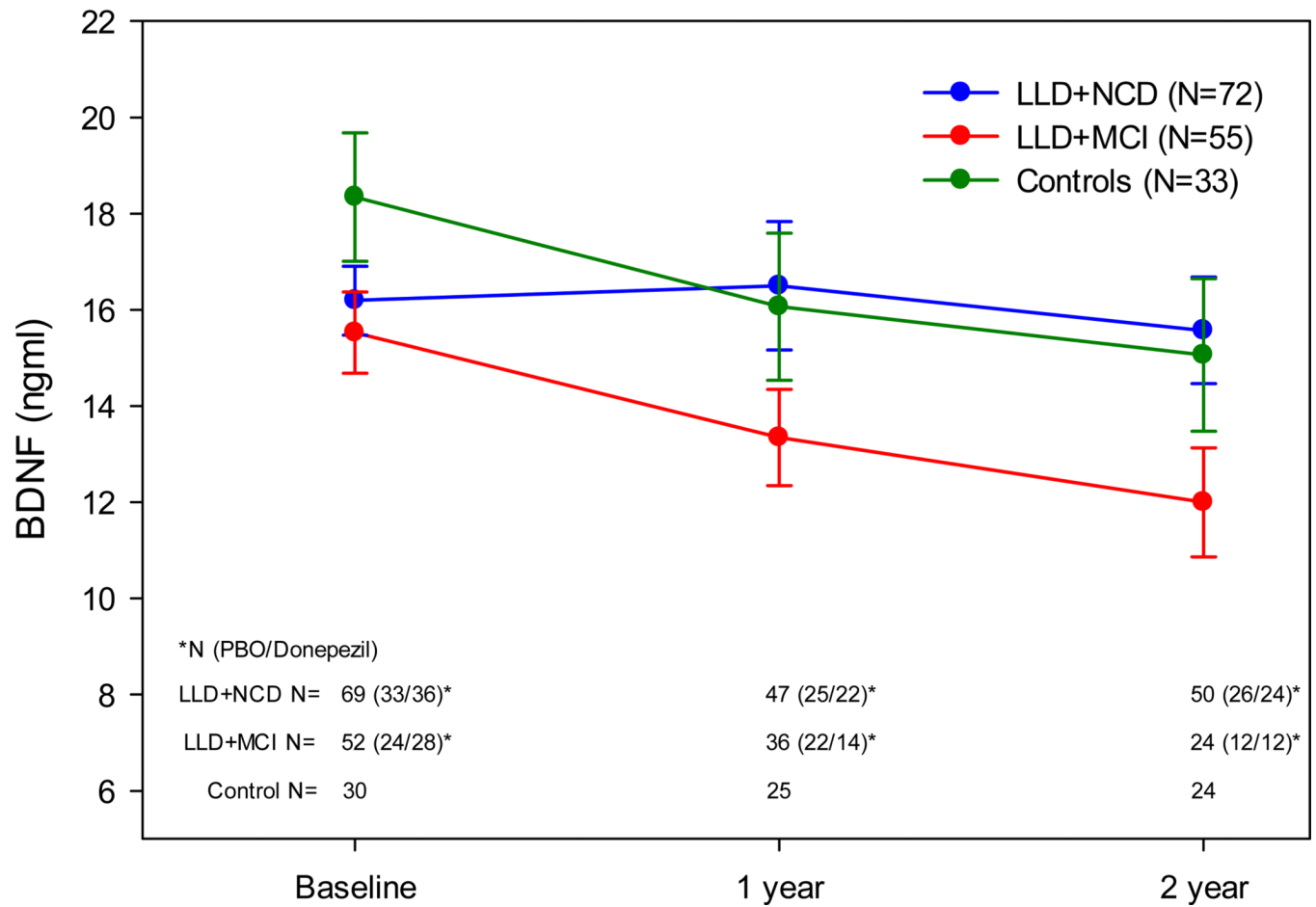
References

1. Autio H, Mätlik K, Rantamäki T, Lindemann L, Hoener MC, Chao M, et al. Acetylcholinesterase inhibitors rapidly activate Trk neurotrophin receptors in the mouse hippocampus. *Neuropharmacology*. 2011; 61(8):1291–1296. [PubMed: 21820453]
2. Bhalla RK, Butters MA, Becker JT, Houck PR, Snitz BE, Lopez OL, et al. Patterns of mild cognitive impairment after treatment of depression in the elderly. *American Journal of Geriatric Psychiatry*. 2009; 17:308–316. [PubMed: 19307859]

3. Butters MA, Young JB, Lopez O, Aizenstein HJ, Mulsant BH, Reynolds CF 3rd, et al. Pathways linking late-life depression to persistent cognitive impairment and dementia. *Dialogues in Clinical Neuroscience*. 2008; 10(3):345–357. [PubMed: 18979948]
4. Caraci F, Copani A, Nicoletti F, Drago F. Depression and Alzheimer's disease: neurobiological links and common pharmacological targets. *European Journal of Pharmacology*. 2010; 626(1):64–71. [PubMed: 19837057]
5. Diniz BS, Butters MA, Albert SM, Dew MA, Reynolds CF 3rd. Late-life depression and risk of vascular dementia and Alzheimer's disease: systematic review and meta-analysis of community-based cohort studies. *British Journal of Psychiatry*. 2013; 202:329–335. [PubMed: 23637108]
6. Diniz BS, Nunes PV, Yassuda MS, Forlenza OV. Diagnosis of mild cognitive impairment revisited after one year. Preliminary results of a prospective study. *Dementia and Geriatric Cognitive Disorder*. 2009; 27(3):224–231.
7. Diniz BS, Teixeira AL, Talib LL, Mendonca VA, Gattaz WF, Forlenza OV. Serum brain-derived neurotrophic factor level is reduced in antidepressant-free patients with late-life depression. *World Journal of Biological Psychiatry*. 2010; 11(3):550–555. [PubMed: 20109109]
8. Diniz BS, Teixeira AL. Brain-derived neurotrophic factor and Alzheimer's disease: physiopathology and beyond. *Neuromolecular Medicine*. 2011; 13(4):217–222. [PubMed: 21898045]
9. Doody RS, Geldmacher DS, Gordon B, Perdomo CA, Pratt RD. Donepezil Study Group. Open-label, multicenter, phase 3 extension study of the safety and efficacy of donepezil in patients with Alzheimer disease. *Archives of Neurology*. 2001; 58(3):427–433. [PubMed: 11255446]
10. Douillard-Guilloux G, Guilloux JP, Lewis DA, Sibille E. Anticipated Brain Molecular Aging in Major Depression. *American Journal of Geriatric Psychiatry*. 2013; 21(5):450–460. [PubMed: 23570888]
11. Erickson KI, Prakash RS, Voss MW, Chaddock L, Heo S, McLaren M, et al. Brain-derived neurotrophic factor is associated with age-related decline in hippocampal volume. *J Neurosci*. 2010; 30(15):5368–5375. [PubMed: 20392958]
12. Erkinjuntti T, Kurz A, Gauthier S, Bullock R, Lilienfeld S, Damaraju CV. Efficacy of galantamine in probable vascular dementia and Alzheimer's disease combined with cerebrovascular disease: a randomised trial. *Lancet*. 2002; 359(9314):1283–1290. [PubMed: 11965273]
13. Forlenza OV, Diniz BS, Teixeira AL, Ojopi EB, Talib LL, Mendonça VA, et al. Effect of brain-derived neurotrophic factor Val66Met polymorphism and serum levels on the progression of mild cognitive impairment. *World Journal of Biological Psychiatry*. 2010; 11(6):774–780. [PubMed: 20491609]
14. Laird NM, Ware JH. Random effects models for longitudinal data. *Biometrics*. 1982; 38:963–974. [PubMed: 7168798]
15. Laske C, Stransky E, Leyhe T, Eschweiler GW, Maetzler W, Wittorf A, et al. BDNF serum and CSF concentrations in Alzheimer's disease, normal pressure hydrocephalus and healthy controls. *Journal of Psychiatric Research*. 2007; 41(5):387–394. [PubMed: 16554070]
16. Lee JG, Shin BS, You YS, Kim JE, Yoon SW, Jeon DW, et al. Decreased serum brain-derived neurotrophic factor levels in elderly Korean with dementia. *Psychiatry Investigation*. 2007; 6(4): 299–305. [PubMed: 20140129]
17. Lee JG, Shin BS, You YS, Kim JE, Yoon SW, Jeon DW, et al. Decreased serum brain-derived neurotrophic factor levels in elderly Korean with dementia. *Psychiatry Investigation*. 2009; 6(4): 299–305. [PubMed: 20140129]
18. Lee JS, Potter GG, Wagner HR, Welsh-Bohmer KA, Steffens DC. Persistent mild cognitive impairment in geriatric depression. *International Psychogeriatrics*. 2007; 19:125–135. [PubMed: 16834811]
19. Leyhe T, Stransky E, Eschweiler GW, Buchkremer G, Laske C. Increase of BDNF serum concentration during donepezil treatment of patients with early Alzheimer's disease. *European Archives of Psychiatry and Clinical Neuroscience*. 2008; 258(2):124–128. [PubMed: 17990049]
20. Lu P, Edland S, Teng E, Tingus K, Petersen R, Cummings J, et al. Donepezil delays progression to AD in MCI subjects with depressive symptoms. *Neurology*. 2009; 72(24):2115–2121. [PubMed: 19528519]

21. McKinney BC, Sibille E. The Age-by-Disease Interaction Hypothesis of Late-Life Depression. *American Journal of Geriatric Psychiatry*. 2013; 21(5):418–432. [PubMed: 23570886]
22. Murer MG, Boissiere F, Yan Q, Hunot S, Villares J, Faucheux B, Agid Y, Hirsch E, Raisman-Vozari R. An immunohistochemical study of the distribution of brain-derived neurotrophic factor in the adult human brain, with particular reference to Alzheimer's disease. *Neuroscience*. 1999; 88(4):1015–32. [PubMed: 10336117]
23. Pei Y, Smith AK, Wang Y, Pan Y, Yang J, Chen Q, et al. The brain-derived neurotrophic-factor (BDNF) val66met polymorphism is associated with geriatric depression: a meta-analysis. *American Journal of Medical Genetics B Neuropsychiatric Genetics*. 2012; 159B(5):560–566.
24. Petersen RC, Thomas RG, Grundman M, Bennett D, Doody R, Ferris S, et al. Vitamin E and donepezil for the treatment of mild cognitive impairment. *New England Journal of Medicine*. 2005; 352(23):2379–2388. [PubMed: 15829527]
25. Reynolds CF 3rd, Butters MA, Lopez O, Pollock BG, Dew MA, Mulsant BH, et al. Maintenance treatment of depression in old age: a randomized, double-blind, placebo-controlled evaluation of the efficacy and safety of donepezil combined with antidepressant pharmacotherapy. *Archives of General Psychiatry*. 2011; 68(1):51–60. [PubMed: 21199965]
26. Sen S, Duman R, Sanacora G. Serum brain-derived neurotrophic factor, depression, and antidepressant medications: meta-analyses and implications. *Biological Psychiatry*. 2008; 64(6): 527–532. [PubMed: 18571629]
27. Tapia-Arancibia L, Aliaga E, Silhol M, Arancibia S. New insights into brain BDNF function in normal aging and Alzheimer disease. *Brain Research Review*. 2008; 59(1):201–220.
28. Taylor WD, Züchner S, McQuoid DR, Payne ME, MacFall JR, Steffens DC, et al. The brain-derived neurotrophic factor VAL66MET polymorphism and cerebral white matter hyperintensities in late-life depression. *American Journal of Geriatric Psychiatry*. 2008; 16(4):263–271. [PubMed: 18263664]
29. Teixeira AL, Barbosa IG, Diniz BS, Kummer A. Circulating levels of brain-derived neurotrophic factor: correlation with mood, cognition and motor function. *Biomarkers in Medicine*. 2010; 4(6): 871–887. [PubMed: 21133708]

Serum BDNF Levels (Mean \pm STDERR)



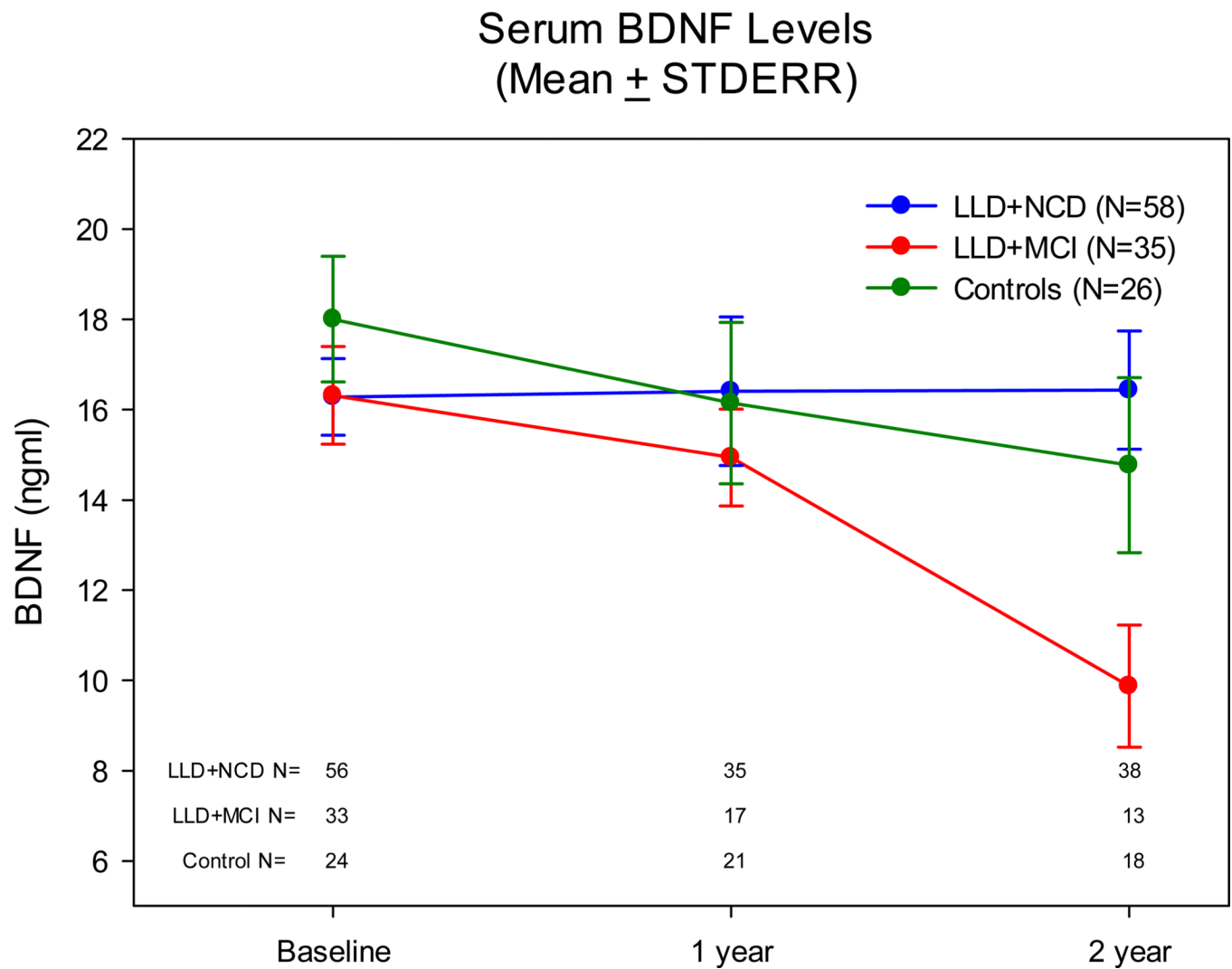


Figure 1.

Longitudinal pattern of changes in BDNF levels according to baseline diagnosis.

B – Longitudinal pattern of changes in BDNF levels according to baseline diagnosis in subjects whose cognitive diagnosis did not change during course of follow-up.

BDNF: Brain-Derived Neurotrophic Factor; LLD+NCD: late-life depression and no cognitive decline; LLD+MCI: late-life depression and mild cognitive impairment.

Table 1

Baseline socio-demographic and cognitive performance according to diagnostic groups

	Controls (N=33)	LLD+NCD (N=72)	LLD+MCI (N=55)	Test statistics	df	P	Effect Size ^a
Gender (%Women)	73%	78%	76%	X ² =0.32	2	0.85	0.05
Race (%Whites) *	88%	93%	86%	X ² =2.00	2	0.37	0.11
Age (years) **	74.1 ± 5.1	72.0 ± 5.9	75.5 ± 6.1	F=5.96	2,157	0.003	0.07
Education (years) **	14.3 ± 2.1	14.1 ± 2.7	12.9 ± 2.1	F=5.04	2,157	0.008	0.06
Baseline HDRS **	2.6 ± 1.9	6.1 ± 3.1	7.2 ± 3.1	F=27.30	2,157	<0.001	0.26
DRS **	137.4 ± 3.9	138.3 ± 3.8	132.7 ± 5.6	F=25.44	2,157	<0.001	0.25
MMSE **	28.8 ± 1.0	28.9 ± 1.1	27.8 ± 1.5	F=14.75	2,157	<0.001	0.16
BDNF (pg/ml) #	18.3 ± 7.3	16.2 ± 6.0	15.5 ± 6.1	F=1.64	2,146	0.20	0.02

HDRS: Hamilton Depression Rating Scale; DRS: Dementia Rating Scale; MMSE: Mini-Mental State Examination.

Baseline HDRS: HDRS scores after the remission of the index depressive episode, prior to randomization to Donepezil or placebo (Reynolds et al., 2012).

* vs. non-Whites

** data shown as mean ± standard deviation

^a Effect size: Cramer's V for categorical and eta-square for continuous.

data shown as mean ± standard error (analysis controlled for baseline age and HDRS scores, eta squared: 0.03 and .0003 respectively).

Table 2

Repeated measure mixed model analyses.

Model 1: effect of diagnosis (LLD+MCI, LLD+NCD, controls), time, and the interaction between diagnosis and time on BDNF levels using baseline age and HDRS as covariates. **				
Main effect	Beta (se)	df	F	p
Intercept	27.81 (5.82)			
Age *	−.13 (0.08)	1,155	2.71	0.10
HRSD scores *	0.02 (0.16)	1,155	0.02	0.90
Diagnosis		2,155	1.89	0.16
LLD+MCI	−2.73 (1.59)			
LLD+NCD	−2.58 (1.47)			
Time		2,155	4.32	0.02
1 year	−1.87 (1.63)			
2 year	−3.50 (1.64)			
Diagnosis × Time		4,155	0.97	0.42
LLD+MCI: 1 year	−0.12 (2.11)			
LLD+MCI: 2 year	0.26 (2.25)			
LLD+NCD: 1 year	1.80 (2.00)			
LLD+NCD: 2 year	3.08 (1.98)			
Model 2: effects of Treatment (Donepezil vs. Placebo), time, baseline diagnosis (LLD+MCI vs. LLD+NCD) on BDNF levels using baseline age and HDRS as covariates. ***				
Main effect	Beta (se)	df	F	p
Intercept	23.97 (6.17)			
Age *	−0.11 (0.08)	1,121	1.84	0.18
HRSD scores *	0.04 (0.16)	1,121	0.06	0.80
Treatment (Donepezil)	0.41 (1.46)	1,121	0.38	0.54
Time		2,121	1.85	0.16
1 year	1.08 (1.63)			
2 year	−0.19 (1.42)	1,121	1.92	0.17
Diagnosis (MCI)	−0.84 (1.66)			
Treatment × Diagnosis (MCI*Donepezil)	1.05 (2.21)	1,121	1.25	0.27
Time × Treatment		2,121	0.07	0.94
1 year: Donepezil	−2.52 (2.36)			
2 year: Donepezil	− 0.39 (2.03)			
Time × Diagnosis		2,121	1.10	0.34
1 year: MCI	−3.85 (2.39)			
2 year: MCI	−2.28 (2.45)			
Time × Treatment × Diagnosis		2,121	1.04	0.36
1 year: Donepezil: MCI	4.85 (3.64)			

Model 2: effects of Treatment (Donepezil vs. Placebo), time, baseline diagnosis (LLD+MCI vs. LLD+NCD) on BDNF levels using baseline age and HDRS as covariates. ***

Main effect	Beta (se)	df	F	p
2 year: Donepezil: MCI	-0.47 (3.50)			

BDNF: Brain-Derived Neurotrophic Factor; LLD+NCD: late-life depression and no cognitive decline; LLD+MCI: late-life depression and mild cognitive impairment. HDRS: Hamilton Depression Rating Scale-17 items.

* Baseline age and HDRS scores.

** References controls and baseline

*** References: LLD+NCD, baseline and placebo