

Published in final edited form as:

J Pain. 2013 October ; 14(10): 1019–1030. doi:10.1016/j.jpain.2013.05.005.

The relation between pain-related fear and disability: A meta-analysis

Emily L. Zale,
Syracuse University

Krista L. Lange,
Texas A&M University

Sherecce A. Fields, and
Texas A&M University

Joseph W. Ditre
Syracuse University

Abstract

Within a biopsychosocial framework, psychological factors are thought to play an important role in the onset and progression of chronic pain. The cognitive-behavioral fear-avoidance model of chronic pain suggests that pain-related fear contributes to the development and maintenance of pain-related disability. However, investigations of the relation between pain-related fear and disability have demonstrated considerable between-study variation. The main goal of the current meta-analysis was to synthesize findings of studies investigating cross-sectional associations between pain-related fear and disability, in order to estimate the magnitude of this relation. We also tested potential moderators, including type of measure used, demographic characteristics, and relevant pain characteristics. Searches in PubMed and PsycINFO yielded a total of 46 independent samples ($N = 9579$) that reported correlations between pain-related fear and disability among persons experiencing acute or chronic pain. Effect size estimates were generated using a random effects model and artifact distribution method. The positive relation between pain-related fear and disability was observed to be moderate to large in magnitude, and stable across demographic and pain characteristics. Although some variability was observed across pain-related fear measures, results were largely consistent with the fear-avoidance model of chronic pain.

Keywords

fear of pain; disability; meta-analysis; fear-avoidance; pain

Chronic pain is a critical public health problem that affects an estimated 37–41% of persons worldwide⁷² and engenders a substantial economic burden on both individuals and

© 2013 The American Pain Society. Published by Elsevier Inc. All rights reserved.

Corresponding Author: Joseph W. Ditre, Ph.D., Department of Psychology, Syracuse University, Syracuse, NY 13244, Voice: 315-443-2705, jwditre@syr.edu.

Disclosures

This project was supported by Grant No. R21DA034285 awarded to Joseph W. Ditre by the National Institute on Drug Abuse. All authors have no conflicts of interest.

Publisher's Disclaimer: This is a PDF file of an unedited manuscript that has been accepted for publication. As a service to our customers we are providing this early version of the manuscript. The manuscript will undergo copyediting, typesetting, and review of the resulting proof before it is published in its final citable form. Please note that during the production process errors may be discovered which could affect the content, and all legal disclaimers that apply to the journal pertain.

systems.⁵⁵ Chronic pain has been associated with a variety of negative outcomes, including increased absence from work and unemployment,⁴ reduced participation in social and recreational activities,¹⁰ lower perceived social support,⁶ increased rates of psychiatric disorders and suicidality,^{32,84} and disability. Pain-related disability encompasses a variety of domains including deficits in physical, occupational, recreational, and social functioning. Given the substantial impact that chronic pain has on individuals and health care systems, factors that may contribute to the development of pain-related disability have received considerable empirical attention.

According to the biopsychosocial model of chronic pain, psychological factors (e.g., pain-related fear) contribute to the onset and progression of both pain and disability.²³ In accord with a cognitive-behavioral perspective, the fear-avoidance model of chronic pain posits that pain-related fear activates avoidance mechanisms, resulting in the avoidance of movement and activity. This model was originally developed to explain the transition from acute to chronic low-back pain.^{41,81–83} Although avoidance behaviors may be adaptive in the context of acute pain (e.g., by allowing an acute injury to heal), long-term avoidance of physical activity is thought to impair daily functioning and result in greater physical disability. The fear-avoidance model further posits that pain-related fear may be negatively reinforced by avoidance behaviors, leading to the maintenance and progression of disability.

A growing body of research supports the notion that pain-related fear may contribute to the development of chronic pain and pain-related disability. An initial qualitative review of the fear-avoidance model revealed that pain-related fear was associated with reduced physical performance, expectancies for greater pain, and greater self-reported disability.⁸³ However, these authors also noted considerable between-study variability, with effect size estimates of the relation between pain-related fear and disability ranging from small to large. Following an increase in primary studies, Leeuw et al. completed a second qualitative review of the fear-avoidance model in chronic low-back pain.⁴⁰ These authors concluded that fear-avoidance behaviors likely contribute to the maintenance of chronic pain, and that there is evidence to suggest that pain-related fear may serve as a risk factor for the development of chronic lower back pain.⁴⁰

Although there is increasing evidence to support the fear-avoidance model of chronic pain, we are not aware of any studies that have attempted to estimate the magnitude of the relation between pain-related fear and disability. The variability observed across studies may suggest the presence of moderating factors, though little is known regarding the circumstances in which the strength of this relation may vary. Therefore, the main goal of the current study was to estimate the magnitude of the relation between pain-related fear and self-reported disability among persons reporting acute or chronic pain. First, we sought to estimate the average correlation after correcting for sampling error and artifacts (i.e., reliability of predictor and criterion variables) across primary studies. We then sought to test the influence of potential moderating factors, including measurement variability, participant demographics, and pain characteristics. For example, sub-group analyses were conducted to estimate the average correlation between pain-related fear and disability within different pain conditions and for individual measures of pain-related fear and disability.

Method

Search Procedure and Study Selection

Relevant studies published prior to April 2012 were identified using PubMed and PsycINFO online databases. Searches were conducted using the terms *fear* and *pain* and *disability*, and returned reference lists were reviewed to identify additional relevant studies. Searches yielded a total of 787 unique citations. Studies were included if they met the following

criteria: published in English, published in a peer-reviewed journal, included self-report measures of pain-related fear and disability (e.g., occupational, social, or recreational), included only participants who reported current acute or chronic pain (i.e., not healthy controls), and reported correlations between pain-related fear and disability. Studies that examined treatment efficacy were included if they reported correlations at baseline (i.e., pre-treatment). When multiple studies used the same sample, the publication that provided the most information (e.g., reliability coefficients for measures of pain-related fear and disability) was selected for inclusion. For instances in which studies reported results for more than one sample (i.e., distinct, non-overlapping groups of participants), results were coded separately for each sample. Figure 1 depicts the stages in which studies were identified and the number of studies excluded at each stage. A total of 41 primary studies, with 46 unique samples, were identified for inclusion in the current meta-analysis.

Selection of Predictor Variables

Pain-related fear is typically measured via self-report instruments that assess fear of experiencing pain, fear of activities that may elicit pain (e.g., work and physical activity), fear of movement/(re)injury, and pain-related anxiety. All studies that included at least one self-report measure of pain-related fear were eligible for inclusion in the current analyses. Table 1 presents a summary of each pain-related fear measure from which data were derived.

Selection of Criterion Variables

Pain-related disability has been identified as a core outcome measure that should be assessed in all trials involving patients with chronic pain.¹⁸ Patient perceptions of disability can be reliably assessed via both general and condition-specific self-report measures that assess impaired functioning across a variety of domains, including self-care, physical activity, and social and occupational functioning. All studies included in this meta-analysis incorporated at least one self-report measure of disability (see Table 1).

Selection of Moderator Variables

Type of measure used to assess predictor and criterion variables—Primary studies that tested associations between pain-related fear and disability have employed a variety of self-report measures to assess both constructs. With regard to predictor measures, although some directly assess fear of experiencing pain,^{47,65} others assess beliefs that pain may be indicative of serious injury, or that pain may be worsened by movement,^{49,75,87} and only a subset assess specific avoidance behaviors.^{47,65,87} With regard to criterion disability measures, a relatively small proportion assess how pain may interfere with factors such as mood,^{8,59} sexual activity,^{19,29,56} and sleep,^{8,29,37,59,80} and researchers have expressed concern that some disability measures may be susceptible to floor and ceiling effects, possibly as a function of disability severity.⁵⁸ Given the observed variability in predictor and criterion measures, we sought to test whether the association between pain-related fear and disability may be moderated by the type of measure used across primary studies. We also sought to examine whether the magnitude of this association may vary across subscales within a single measure.

Demographic characteristics—Among persons with chronic pain, age and gender differences have been observed with regard to pain reporting (e.g., pain intensity), treatment outcomes, and health-related quality of life.^{20,60,61} Therefore, we sought to test whether average age or gender composition of the sample moderated the relation between pain-related fear and disability.

Pain characteristics—First, although pain intensity has not traditionally been included in the fear-avoidance model, it has been positively associated with greater disability.²⁵ Therefore, we tested average self-reported pain intensity (typically measured on a 0–10 scale) as a potential moderator of the relation between pain-related fear and disability. Second, given that treatment-seeking chronic pain patients may report more severe/enduring pain, we also tested treatment status (treatment-seeking vs. non-treatment-seeking) as a potential moderator. Third, the extent to which pain duration may moderate the relationship between pain-related fear and disability remains unclear. For example, the fear avoidance model predicts that pain-related fear is a precursor to pain-related disability, so it may be that pain-related fear is more strongly related to disability at the onset of a chronic pain condition. Therefore, we tested chronic pain duration as a potential moderator. Finally, although the fear-avoidance model was originally developed with regard to chronic low-back pain, the relation between pain-related fear and disability has since been tested among persons with a variety of chronic pain conditions, and there is reason to believe that the model may apply across types of pain.⁴⁰ Therefore, we sought to test whether differences in the relation between pain-related fear and disability could be observed between studies that included samples with low-back pain, relative to other pain conditions.

Data Extraction

Data were coded by two independent reviewers. For each study, the sample size, demographic variables (i.e., age, gender composition), and correlations (r) between pain-related fear and disability were recorded. With regard to measures of pain-related fear and disability, coders documented which measures had been utilized and the reliability coefficient (α) for each measure. For studies that utilized multiple pain-related fear or disability measures, intercorrelations between the measures were coded. Various pain characteristics were also coded for use in moderator analyses. The primary pain type was coded as low-back pain or “other” (e.g., non-specific pain, whiplash). Coders also documented whether the sample was recruited from a pain treatment program or whether participants were seeking pain treatment services at the time of study enrollment. Although no standard has been agreed upon, cut-offs between 3 and 12 months are typically used to distinguish acute and chronic pain.⁷⁴ Therefore, two dichotomous variables were created to represent pain duration: pain lasting longer than 3 months (yes/no), and pain lasting longer than 1 year (yes/no). Pain duration was coded only for primary studies that reported relevant inclusion criteria (i.e., minimum pain duration). In instances in which minimum pain duration was not reported, pain duration was coded based on the reported measure of central tendency (e.g., M duration). Average pain intensity ratings (i.e., numerical rating scale; 0–10 or 0–100) were also coded. Finally, gender composition of the sample was coded as the percentage of the total sample that was female.

Data Analytic Approach

Effect size estimates were derived using methods outlined by Hunter & Schmidt.³¹ Two sets of meta-analytic calculations were conducted in order to estimate the magnitude of the relation between pain-related fear and disability before and after correction for reliability artifacts. First, a random-effects model that corrects for sampling error in primary studies was used to generate the average sample size-weighted correlation (r), and to determine the amount of variance attributable to sampling error. Second, calculations were conducted using the artifact distribution method, which yields the average correlation (ρ) corrected for artifacts in the primary studies.³¹ These analyses employed corrections for reliability (α) of predictor (pain-related fear) and criterion (disability) measures reported across primary studies. Reliability artifact distributions are presented in Table 2.

To address assumptions of independence, one correlation between pain-related fear and disability was included from each primary study. When primary studies reported correlations between multiple measures, composite formulas were used to generate a single effect size for each sample.⁵¹ In these instances, reliability coefficients were also pooled using formulas by Nunnally.⁵¹ The average correlation between pain-related fear and disability was calculated for two studies that did not report all information required to employ composite formulas.^{2,46}

Two types of moderator analyses were conducted. For categorical moderators, meta-analytic calculations were conducted separately within each level of the hypothesized moderator. Similar to our estimate of the overall effect size, the average sample size-weighted correlation was calculated using a random-effects model, and the artifact distribution method was used to generate an effect size estimate that also corrected for reliability of the predictor and criterion measures. Sub-group analyses were conducted in the same manner, in order to test whether the average sample size-weighted correlation (r) or the average corrected correlation (r_c) varied across groups. Continuous moderators were tested using weighted least squares (WLS) regression with method-of-moments parameters.^{43,90}

Risk of availability bias was assessed using formulas for file drawer analyses provided by Hunter & Schmidt.³¹ Analyses calculated the number of studies with null findings that would be needed in order to reduce the average correlation to practical insignificance. Specifically, we calculated the number of studies required to reduce the correlation between pain-related fear and disability below that which could be considered a small effect size (i.e., to a correlation of .1).

Results

Study Coding

The meta-analysis included 46 independent samples ($N = 9579$) from 41 primary studies. With regard to moderator analyses, pain intensity data were available for 37 samples. Adequate information that allowed for classification of pain duration was reported in a total of 40 samples. Coded variables from each sample are presented in Table 3. Initial agreement between the two independent raters was 85%, and consensus reached 100% via discussion and reference to the coding manual.

Estimate of the Average Correlation between Pain-related fear and Disability

Results of all meta-analytic calculations are presented in Table 4. The average sample size-weighted correlation (r) between pain-related fear and disability was found to be .42, which can be classified as moderate to large in magnitude.¹¹ Results indicated that approximately 35% of the variance observed in the sample correlations was accounted for by sampling error. After correcting for reliability in the criterion and predictor variables, the average corrected correlation (r_c) between pain-related fear and disability was .50, which can be classified as a large effect. Approximately 41% of the variance observed in the sample correlations was found to be attributable to sampling error and reliability artifacts of pain-related fear and disability measures.

Moderator Analyses

Type of measure used to assess predictor and criterion variables—A total of 43 samples reported individual correlations between disability and the two subscales (i.e., physical activity, work) of the Fear-Avoidance Beliefs Questionnaire (FABQ).⁸⁷ Both the sample size-weighted correlations and the average corrected correlations were greater when pain-related fear was measured with the Physical Activity subscale ($r = .38$, $r_c = .44$) than

with the Work subscale ($r = .31$, $95\% \text{ CI} = .36$). A greater percentage of the variance attributable to sampling error was also observed when pain-related fear was measured with the Physical Activity subscale relative to the Work subscale. Confidence intervals around the estimated correlations were observed to be non-overlapping, which may suggest that scores on the Physical Activity subscale of the FABQ are more strongly related to disability than are scores on the Work subscale. Additional analyses were conducted to test whether the magnitude of the relation between pain-related fear and disability varied between studies which used the FABQ or the Tampa Scale of Kinesiophobia (TSK).⁴⁹ Overlapping confidence intervals were observed around both the average sample-size weighted correlation (r) and the average corrected correlation (r_c), which indicated that the relation between pain-related fear and disability remained stable when measured with either the FABQ or the TSK.

When meta-analytic calculations were performed separately for each type of disability measure, the average sample size-weighted correlation ranged from .33 to .45, and the average corrected correlation ranged from .38 to .52 (see Table 4). In both cases, the lowest correlations were estimated from primary studies that utilized the Neck Disability Index,⁸⁰ and the highest correlations were estimated from primary studies that utilized the Pain Disability Index.⁵⁶ However, large, overlapping confidence intervals indicated that the type of disability measure may not moderate the relation between pain-related fear and disability.

Demographic characteristics—Age and gender composition of the sample (% female) were tested as continuous moderators. Results indicated that neither average age ($r = -.04$, $p = .75$), nor the gender composition of the sample ($r = -.01$, $p = .96$), moderated the association between pain-related fear and disability.

Pain characteristics—Pain intensity was tested both as a categorical and continuous moderator. First, a median split was utilized to categorize samples as either high ($k = 18$) or low ($k = 19$) intensity, and meta-analytic calculations were conducted separately for each group. Results indicated that correlations between pain-related fear and disability did not differ across groups. Similar results were observed when pain intensity was tested as a continuous moderator ($r = .18$, $p = .26$). All other pain characteristics were tested as categorical moderators. The estimated correlation between pain-related fear and disability did not differ as a function of pain location, pain duration, type of chronic pain condition, or whether samples were derived from treatment seeking populations.

Risk of Availability Bias

A file drawer analysis was conducted in order to determine the number of studies with null findings that would be needed in order to reduce the average correlation to practical insignificance. Results indicated that more than 147 studies, which found no relation between pain-related fear and disability, would be needed in order to reduce the average correlation below that which could be considered a small effect size.

Discussion

Two methods were used to estimate the magnitude of the relation between pain-related fear and disability among persons experiencing acute or chronic pain. Relative to the average sample size-weighted correlation ($r = .42$), the correlation between pain-related fear and disability was larger when the artifact distribution method was used ($r = .50$). Thus, it appears the magnitude of the relationship can be classified as moderate to large.¹¹ Additional analyses were conducted to test potential moderating factors. Results were stable across demographic and pain characteristics. The average sample size-weighted correlations

and the average corrected correlations did not vary as a function of sample age, gender composition, average pain intensity, pain location, pain duration, or whether the sample was derived from a population that was seeking pain-treatment. With regard to measures used to assess pain-related fear and disability, the FABQ Physical Activity subscale appeared to be more highly related to disability than did the FABQ Work subscale, but no other differences were observed.

Results from the current meta-analysis suggest that the relationship between pain-related fear and disability is relatively large and stable across demographic and pain characteristics. Assessment for risk of availability bias also indicated that a large number of missing studies would be required to reduce this association to practical insignificance. The current findings are consistent with the fear-avoidance model of chronic pain, which posits that pain-related fear may contribute to greater disability among persons with chronic pain. Importantly, the fear-avoidance model also predicts that reductions in pain-related fear may improve pain-related disability outcomes, and pain-related fear has been identified as a target for pain treatment.⁴⁰ Indeed, cognitive-behavioral therapy has been shown to reduce reported levels of pain-related fear,³ and there is some evidence to suggest that persons high in pain-related fear may benefit from behavioral interventions that increase physical activity.³⁵

In the current study, there was some evidence to suggest that the magnitude of the relation between pain-related fear and disability was less robust when the pain-related fear measure was specific to work-related activities (i.e., FABQ-Work subscale). This finding may reflect a multidimensional conceptualization of disability, which extends beyond occupational functioning to include social, recreational, and general physical (e.g., sleep, self-care) functioning. As such, it may suggest that fear of general physical activity (vs. work-related activity) is a stronger predictor of global levels of pain-related disability. Additional research is needed to determine the clinical significance of this finding. For example, settings that aim to reduce patient burden may investigate whether administration of only the FABQ-Physical Activity Subscale (4 items) is sufficient for predicting disability or guiding interventions that target pain-related fear in clinical populations.

Given the observed strength of association between pain-related fear and disability, it is notable that pain characteristics (e.g., duration, intensity) did not moderate this relation. For example, the current results demonstrated a robust relation between pain-related fear and disability, even among persons experiencing acute pain (i.e., less than 3 months). This finding is consistent with the fear-avoidance model of chronic pain, in that pain-related fear may predict disability following acute injury, and that pain-related fear may serve to maintain disability in the presence of recurring pain. Future research may examine the extent to which reducing pain-related fear following acute injury may impede progression to chronic pain. For example, there is some evidence to suggest that reductions in pain-related fear are associated with recovery following acute injury.⁴⁹ Although pain intensity was not observed to moderate the relation between pain-related fear and disability in the current study, pain intensity has been associated with negative outcomes, including disability,²² depression,¹⁵ and suicidal ideation.⁶⁶ Thus, these findings should not preclude future investigations of how pain characteristics may influence treatments that address pain-related fear, as such outcomes may vary as a function of pain duration and/or intensity.

Similarly, although these results indicated that average age and gender composition of the sample did not moderate the relation between pain-related fear and disability, both have been associated with pain-treatment outcomes,^{20,28} and future research would benefit from examining how sociodemographic characteristics may influence the outcomes of treatments that target pain-related fear. Future studies should also explore additional psychosocial variables (e.g., attentional processes, negative affectivity, emotion regulation) that may

moderate the relation between pain-related fear and disability. For example, greater attention to pain has been associated with increased emotional distress and reduced psychosocial functioning among persons with chronic pain,⁴⁵ and reductions in pain-related fear have been associated with decreased pain-related attentional bias following pain-treatment.¹⁶ Similarly, affect and emotion regulation have been associated with pain reactivity, and engagement of maladaptive emotion regulation strategies (e.g., suppression) has been associated with negative pain-treatment outcomes.³⁴

To our knowledge, the current investigation provides the first meta-analytic estimate of the magnitude of the relation between pain-related fear and disability. However, several limitations should be noted. First, primary studies were cross-sectional investigations, which preclude inferences of causality. Second, there is little consensus regarding definitions of acute and chronic pain,⁷⁴ and many primary studies either provided minimal descriptions of their pain sample (e.g., provided only a median pain duration), or did not specify pain duration as an inclusion criterion. Therefore, our tests of pain duration as a moderator were likely limited by the extent to which samples could be categorized as acute or chronic in nature. Third, many primary studies (78%) did not provide reliability coefficients for the measures used in their samples, which prohibited analyses that correct for artifacts specific to each sample (i.e., individual corrections meta-analysis),³¹ and may have limited the extent to which the corrected correlations reflect an estimate of the construct-level correlation. Finally, we were unable to test relations between negative affect and other potentially relevant individual differences (e.g., affect) due to the small number of primary studies that reported such data.

In summary, results of the current meta-analysis indicated a robust relation between pain-related fear and disability, which can be classified as moderate to large in size. The magnitude of this relation was observed to be stable across relevant demographic and pain characteristics. Consistent with these findings, pain-related fear has been identified as an important target for pain treatment, and evidence suggests that reductions in pain-related fear may be associated with improved treatment outcomes.⁵³ Future research should seek to identify potential pain-related, psychosocial, and sociodemographic factors that may influence the course and outcomes of treatments designed to target pain-related fear.

Acknowledgments

We thank Dr. Christopher Berry, Department of Psychology, Texas A&M University for his invaluable assistance.

References

1. Ayre M, Tyson GA. The role of self-efficacy and fear-avoidance beliefs in the prediction of disability. *Aust Psychol.* 2001; 36:250–253.
2. Boersma K, Linton SJ. Expectancy, fear and pain in the prediction of chronic pain and disability: A prospective analysis. *Eur J Pain.* 2006; 10:551–557. [PubMed: 16199189]
3. Bailey KM, Carleton RN, Vlaeyen JW, Asmundson GJ. Treatments addressing pain-related fear and anxiety in patients with chronic musculoskeletal pain: a preliminary review. *Cogn Behav Ther.* 2010; 39:46–63. [PubMed: 19697175]
4. Braden JB, Zhang L, Zimmerman FJ, Sullivan MD. Employment outcomes of persons with a mental disorder and comorbid chronic pain. *Psychiatr Serv.* 2008; 59:878–885. [PubMed: 18678685]
5. Calley DQ, Jackson S, Collins H, George SZ. Identifying patient fear-avoidance beliefs by physical therapists managing patients with low back pain. *J Orthop Sports Phys Ther.* 2010; 40:774–783. [PubMed: 20972338]
6. Carr JL, Moffett JA. The impact of social deprivation on chronic back pain outcomes. *Chronic Illn.* 2005; 1:121–129. [PubMed: 17136918]

7. Chaory K, Fayad F, Rannou F, Lefevre-Colau MM, Fermanian J, Revel M, Poiraudau S. Validation of the French version of the fear avoidance belief questionnaire. *Spine (Phila Pa 1976)*. 2004; 29:908–913. [PubMed: 15082995]
8. Cleeland CS, Ryan KM. Pain Assessment: Global use of the Brief Pain Inventory. *Ann Acad Med Singapore*. 1994; 23:129–138. [PubMed: 8080219]
9. Cleland JA, Fritz JM, Childs JD. Psychometric properties of the Fear-Avoidance Beliefs Questionnaire and Tampa Scale of Kinesiophobia in patients with neck pain. *Am J Phys Med Rehabil*. 2008; 87:109–117. [PubMed: 17993982]
10. Closs SJ. The impact of neuropathic pain on relationships. *J Adv Nurs*. 2009; 65:402. [PubMed: 19191938]
11. Lawrence, Cohen J., editor. *Statistical power analysis for the behavioral sciences*. 2. Erlbaum Associates Inc; Hillsdale: 1988.
12. Cook AJ, Brawer PA, Vowles KE. The fear-avoidance model of chronic pain: Validation and age analysis using structural equation modeling. *Pain*. 2006; 121:195–206. [PubMed: 16495008]
13. Coudeyre E, Tubach F, Rannou F, Baron G, Coriat F, Brin S, Revel M, Poiraudau S. Fear-avoidance beliefs about back pain in patients with acute LBP. *Clin J Pain*. 2007; 23:720–725. [PubMed: 17885352]
14. Crombez G, Vlaeyen JWS, Heuts PHTG, Lysens R. Pain-related fear is more disabling than pain itself: Evidence on the role of pain-related fear in chronic back pain disability. *Pain*. 1999; 80:329–339. [PubMed: 10204746]
15. Currie SR, Wang J. Chronic back pain and major depression in the general population. *Pain*. 2004; 107:54–60. [PubMed: 14715389]
16. Dehghani M, Sharpe L, Nicholas MK. Modification of attentional biases in chronic pain patients: A preliminary study.
17. Denison E, Åsenlöf P, Lindberg P. Self-efficacy, fear avoidance, and pain intensity as predictors of disability in subacute and chronic musculoskeletal pain patients in primary health care. *Pain*. 2004; 111:245–252. [PubMed: 15363867]
18. Dworkin RH, Turk DC, Farrar JT, Haythornthwaite JA, Jensen MP, Katz NP, Kerns RD, Stucki G, Allen RR, Bellamy N, Carr DB, Chandler J, Cowan P, Dionne R, Galer BS, Hertz S, Jadad AR, Kramer LD, Manning DC, Martin S, McCormick CG, McDermott MP, McGrath P, Quessy S, Rappaport BA, Robbins W, Robinson JP, Rothman M, Royal MA, Simon L, Stauffer JW, Stein W, Tolle J, Wernicke J, Witter J. Core outcome measures for chronic pain clinical trials: IMMPACT recommendations. *Pain*. 2005; 113:9–19. [PubMed: 15621359]
19. Fairbank JC, Couper J, Davies JB, O'Brien JP. The Oswestry low back pain disability questionnaire. *Physiotherapy*. 1980; 66:271–273. [PubMed: 6450426]
20. Fillingim RB, King CD, Ribeiro-Dasilva MC, Rahim-Williams B, Riley JL 3rd. Sex, gender and pain: A review of recent clinical and experimental findings. *J Pain*. 2009; 10:447–485. [PubMed: 19411059]
21. French DJ, France CR, Vigneau F, French JA, Evans RT. Fear of movement/(re)injury in chronic pain: A psychometric assessment of the original English version of the Tampa scale for kinesiophobia (TSK). *Pain*. 2007; 127:42–51. [PubMed: 16962238]
22. Fritz JM, George SZ, Delitto A. The role of fear-avoidance beliefs in acute low back pain: Relationships with current and future disability and work status. *Pain*. 2001; 94:7–15. [PubMed: 11576740]
23. Gatchel RJ, Peng YB, Peters ML, Fuchs PN, Turk DC. The biopsychosocial approach to chronic pain: Scientific advances and future directions. *Psychol Bull*. 2007; 133:581–624. [PubMed: 17592957]
24. Gauthier N, Sullivan MJL, Adams H, Stanish WD, Thibault P. Investigating risk factors for chronicity: The importance of distinguishing between return-to-work status and self-report measures of disability. *J Occup Environ Med*. 2006; 48:312–318. [PubMed: 16531836]
25. Gheldof ELM, Vinck J, Van den Bussche E, Vlaeyen JWS, Hidding A, Crombez G. Pain and pain-related fear are associated with functional and social disability in an occupational setting: Evidence of mediation by pain-related fear. *Eur J Pain*. 2006; 10:513–525. [PubMed: 16199186]

26. Grotle M, Garratt AM, Krogstad Jenssen H, Stuge B. Reliability and construct validity of self-report questionnaires for patients with pelvic girdle pain. *Phys Ther.* 2012; 92:111–123. [PubMed: 22016375]
27. Grotle M, Vøllestad NK, Veierød MB, Brox JI. Fear-avoidance beliefs and distress in relation to disability in acute and chronic low back pain. *Pain.* 2004; 112:343–352. [PubMed: 15561390]
28. Hill JC, Lewis M, Sim J, Hay EM, Dziedzic K. Predictors of poor outcome in patients with neck pain treated by physical therapy. *Clin J Pain.* 2007; 23:683–690. [PubMed: 17885347]
29. Hudak PL, Amadio PC, Bombardier C. Development of an upper extremity outcome measure: the DASH (Disabilities of the Arm Shoulder and Hand). *Am J Ind Med.* 1996; 29:602–608. [PubMed: 8773720]
30. Huis in 't Veld RMHA, Vollenbroek-Hutten MMR, Groothuis-Oudshoorn KCGM, Hermens HJ. The role of the fear-avoidance model in female workers with neck-shoulder pain related to computer work. *Clin J Pain.* 2007; 23:28–34. [PubMed: 17277642]
31. Hunter, JE.; Schmidt, FL. *Methods of Meta-Analysis. Correcting Error and Bias in Research Findings.* 2. Thousand Oaks: Sage; 2004.
32. Ilgen MA, Zivin K, McCammon RJ, Valenstein M. Pain and suicidal thoughts, plans and attempts in the United States. *Gen Hos Psychiatry.* 2008; 30:521–527.
33. Käll LB. Psychological determinants of quality of life in patients with whiplash associated disorders: A prospective study. *Disabil Rehabil.* 2009; 9:227–236. [PubMed: 18608419]
34. Keefe FJ, Lumley M, Anderson T, Lynch T, Carson K. Pain and emotion: New research directions. *J Clin Psychol.* 2001; 57:587–607. [PubMed: 11255208]
35. Klaber Moffett JA, Carr J, Howarth E. High fear-avoiders of physical activity benefit from an exercise program for patients with back pain. *Spine.* 2004; 29:1167–1172. [PubMed: 15167652]
36. Koho P, Aho S, Watson P, Hurri H. Assessment of chronic pain behaviour: Reliability of the method and its relationship with perceived disability, physical impairment and function. *J Rehabil Med.* 2001; 33:128–132. [PubMed: 11482353]
37. Kopeck JA, Esdaile JM, Abrahamowicz M, Abenhaim L, Wood-Dauphinee S, Lamping DL, Williams JI. The Quebec Back Pain Disability Scale: Conceptualization and development. *J Clin Epidemiol.* 1996; 49:151–161. [PubMed: 8606316]
38. Kovacs F, Abaira V, Cano A, Royuela A, Gil del Real MT, Gestoso M, Mufraggi N, Muriel A, Zamora J. Fear avoidance beliefs do not influence disability and quality of life in Spanish elderly subjects with low back pain. *Spine (Phila Pa 1976).* 2007; 32:2133–2138. [PubMed: 17762816]
39. Kovacs FM, Muriel A, Medina JM, Abaira V, Sanchez MD, Jauregui JO. Psychometric characteristics of the Spanish version of the FAB questionnaire. *Spine (Phila Pa 1976).* 2006; 31:104–110. [PubMed: 16395186]
40. Leeuw M, Goossens ME, Linton SJ, Crombez G, Boersma K, Vlaeyen JW. The fear-avoidance model of musculoskeletal pain: Current state of scientific evidence. *J Behav Med.* 2007; 30:77–94. [PubMed: 17180640]
41. Lethem J, Slade PD, Troup JDG, Bentley G. Outline of a fear-avoidance model of exaggerated pain perception. *Behav Res Ther.* 1983; 21:401–408. [PubMed: 6626110]
42. Lewis S, Holmes P, Woby S, Hindle J, Fowler N. The relationships between measures of stature recovery, muscle activity and psychological factors in patients with chronic low back pain. *Man Ther.* 2012; 17:27–33. [PubMed: 21903445]
43. Lipsey, MW.; Wilson, D., editors. *Practical Meta-analysis.* Sage; Thousand Oaks: 2001.
44. Martin AL, McGrath PA, Brown SC, Katz J. Anxiety sensitivity, fear of pain and pain-related disability in children and adolescents with chronic pain. *Pain Res Manag.* 2007; 12:267–272. [PubMed: 18080045]
45. McCracken LM. “Attention” to pain in persons with chronic pain: A behavioral approach. *Behav Ther.* 1997; 28:271–284.
46. McCracken LM, Gross RT, Aikens J, Carnrike CLM Jr. The assessment of anxiety and fear in persons with chronic pain: A comparison of instruments. *Behav Res Ther.* 1996; 34:927–933. [PubMed: 8990544]
47. McCracken LM, Zayfert C, Gross RT. The Pain Anxiety Symptoms Scale: Development and validation of a scale to measure fear of pain. *Pain.* 1992; 50:67–73. [PubMed: 1513605]

48. Meyer K, Tschopp A, Sprott H, Mannion AF. Association between catastrophizing and self-rated pain and disability in patients with chronic low back pain. *J Rehabil Med*. 2009; 41:620–625. [PubMed: 19565155]
49. Miller RP, Kori S, Todd D. The Tampa Scale: A measure of kinesiophobia. *Clin J Pain*. 1991; 7:51–52.
50. Mintken PE, Cleland JA, Whitman JM, George SZ. Psychometric properties of the Fear-Avoidance Beliefs Questionnaire and Tampa Scale of Kinesiophobia in patients with shoulder pain. *Arch Phys Med Rehabil*. 2010; 91:1128–1136. [PubMed: 20599053]
51. Nunnally, JC. *Psychometric Theory*. 2. McGraw-Hill; New York: 1978.
52. Palermo TM, Witherspoon D, Valenzuela D, Drotar D. Development and validation of the Child Activity Limitations Interview: A measure of pain-related functional impairment in school-age children and adolescents. *Pain*. 2004; 109:461–470. [PubMed: 15157707]
53. Pedler A, Sterling M. Assessing fear-avoidance beliefs in patients with whiplash-associated disorders: A comparison of 2 measures. *Clin J Pain*. 2011; 27:502–507. [PubMed: 21317772]
54. Peters ML, Vlaeyen JWS, Weber WEJ. The joint contribution of physical pathology, pain-related fear and catastrophizing to chronic back pain disability. *Pain*. 2005; 113:45–50. [PubMed: 15621363]
55. Philips CJ. The cost and burden of chronic pain. *Rev Pain*. 2009; 3:2–5.
56. Pollard CA. Preliminary validity study of the pain disability index. *Percept Mot Skills*. 1984; 59:974. [PubMed: 6240632]
57. Roach KE, Budiman-Mak E, Songsiridej N, Lertratanakul Y. Development of a shoulder pain and disability index. *Arthritis Care Res*. 1991; 4:143–149. [PubMed: 11188601]
58. Roland M, Fairbank J. The Roland-Morris Disability Questionnaire and the Oswestry Disability Questionnaire. *Spine (Phila Pa 1976)*. 2000; 25:3115–3124. [PubMed: 11124727]
59. Roland M, Morris R. A study of the natural history of back pain. Part I: Development of a reliable and sensitive measure of disability in low-back pain. *Spine (Phila Pa 1976)*. 1983; 8:141–144. [PubMed: 6222486]
60. Rustoen T, Wahl AK, Hanestad BR, Lerdal A, Paul S, Miaskowski C. Gender differences in chronic pain--findings from a population-based study of Norwegian adults. *Pain Manag Nurs*. 2004; 5:105–117. [PubMed: 15359222]
61. Rustoen T, Wahl AK, Hanestad BR, Lerdal A, Paul S, Miaskowski C. Age and the experience of chronic pain: Differences in health and quality of life among younger, middle-aged, and older adults. *Clin J Pain*. 2005; 21:513–523. [PubMed: 16215337]
62. Sal  n BA, Spangfort EV, Nygren   L, Nordemar R. The Disability Rating Index: An instrument for the assessment of disability in clinical settings. *J Clin Epidemiol*. 1994; 47:1423–1434. [PubMed: 7730851]
63. Samwel HJA, Kraaimaat FW, Crul BJP, Evers AWM. The role of fear-avoidance and helplessness in explaining functional disability in chronic pain: A prospective study. *Int J Behav Med*. 2007; 14:237–241. [PubMed: 18001239]
64. Sch  tze R, Rees C, Preece M, Sch  tze M. Low mindfulness predicts pain catastrophizing in a fear-avoidance model of chronic pain. *Pain*. 2010; 148:120–127. [PubMed: 19944534]
65. Simons LE, Sieberg CB, Carpino E, Logan D, Berde C. The Fear of Pain Questionnaire (FOPQ): Assessment of pain-related fear among children and adolescents with chronic pain. *J Pain*. 2011; 12:677–686. [PubMed: 21354866]
66. Smith MT, Perlis ML, Haythornthwaite JA. Suicidal ideation in outpatients with chronic musculoskeletal pain: An exploratory study of the role of sleep onset insomnia and pain intensity. *Clin J Pain*. 2004; 20:111–118. [PubMed: 14770051]
67. Swinkels-Meewisse IE, Roelofs J, Oostendorp RA, Verbeek AL, Vlaeyen JW. Acute low back pain: Pain-related fear and pain catastrophizing influence physical performance and perceived disability. *Pain*. 2006a; 120:36–43. [PubMed: 16359797]
68. Swinkels-Meewisse IE, Roelofs J, Schouten EG, Verbeek AL, Oostendorp RA, Vlaeyen JW. Fear of movement/(re)injury predicting chronic disabling low back pain: A prospective inception cohort study. *Spine (Phila Pa 1976)*. 2006b; 31:658–664. [PubMed: 16540870]

69. Swinkels-Meewisse IEJ, Roelofs J, Verbeek ALM, Oostendorp RAB, Vlaeyen JWS. Fear of movement/(re)injury, disability and participation in acute low back pain. *Pain*. 2003; 105:371–379. [PubMed: 14499456]
70. Thomas EN, Pers YM, Mercier G, Cambiere JP, Frasson N, Ster F, Herisson C, Blotman F. The importance of fear, beliefs, catastrophizing and kinesiophobia in chronic low back pain rehabilitation. *Ann Phys Rehabil Med*. 2010; 53:3–14. [PubMed: 20022577]
71. Thompson DP, Urmston M, Oldham JA, Woby SR. The association between cognitive factors, pain and disability in patients with idiopathic chronic neck pain. *Disabil Rehabil*. 2010; 32:1758–1767. [PubMed: 20350122]
72. Tsang A, Von Korff M, Lee S, Alonso J, Karam E, Angermeyer MC, Guimaraes Borges GL, Bromet EJ, de Girolamo G, de Graaf R, Gureje O, Lepine JP, Haro JM, Levinson D, Oakley Browne MA, Posada-Villa J, Seedat S, Watanabe M. Common chronic pain conditions in developed and developing countries: Gender and age differences and comorbidity With depression-anxiety disorders. *J Pain*. 2008; 9:883–891. [PubMed: 18602869]
73. Turk, DC.; Melzack, R. The Measurement of Pain and the Assessment of People Experiencing Pain. In: Turk, DC.; Melzack, R., editors. *Handbook of Pain Assessment*. 3. The Guilford Press; New York: 2011. p. 3-18.
74. Turk, DC.; Okifuji, A. Pain terms and taxonomies of pain. In: Loeser, JD.; Chapman, CR.; Turk, DC.; Butler, SH., editors. *Bonica's Management of Pain*. 3. Lippincott Williams & Wilkins; Hagerstown, MD: 2001. p. 17-25.
75. Turk DC, Robinson JP, Sherman JJ, Burwinkle T, Swanson K. Assessing fear in patients with cervical pain: Development and validation of the Pictorial Fear of Activity Scale-Cervical (PFACT-S-C). *Pain*. 2008; 139:55–62. [PubMed: 18417291]
76. Valencia C, Robinson ME, George SZ. Socioeconomic status influences the relationship between fear-avoidance beliefs work and disability. *Pain Med*. 2011; 12:328–336. [PubMed: 21143764]
77. van den Hout JHC, Vlaeyen JWS, Heuts PHTG, Sillen WJT, Willen AJEHL. Functional disability in nonspecific low back pain: The role of pain-related fear and problem-solving skills. *Int J Behav Med*. 2001; 8:134–148.
78. Verbunt JA, Seelen HA, Vlaeyen JW, van der Heijden GJ, Knottnerus JA. Fear of injury and physical deconditioning in patients with chronic low back pain. *Arch Phys Med Rehabil*. 2003; 84:1227–1232. [PubMed: 12917865]
79. Vernon H, Guerriero R, Soave D, Kavanaugh S, Puhl A, Reinhart C. The relationship between self-rated disability, fear-avoidance beliefs, and nonorganic signs in patients with chronic whiplash-associated disorder. *J Manipulative Physiol Ther*. 2011; 34:506–513. [PubMed: 21978543]
80. Vernon H, Mior S. The Neck Disability Index: a study of reliability and validity. *J Manipulative Physiol Ther*. 1991; 14:409–415. [PubMed: 1834753]
81. Vlaeyen JW, Kole-Snijders AM, Boeren RG, van Eek H. Fear of movement/(re)injury in chronic low back pain and its relation to behavioral performance. *Pain*. 1995; 62:363–372. [PubMed: 8657437]
82. Vlaeyen JWS, Kole-Snijders AMJ, Rotteveel AM, Ruesink R. The role of fear of movement/(re)injury in pain disability. *J Occup Rehabil*. 1995; 5:235–252.
83. Vlaeyen JW, Linton SJ. Fear-avoidance and its consequences in chronic musculoskeletal pain: A state of the art. *Pain*. 2000; 85:317–332. [PubMed: 10781906]
84. Von Korff M, Crane P, Lane M, Miglioretti DL, Simon G, Saunders K, Stang P, Brandenburg N, Kessler R. Chronic spinal pain and physical-mental comorbidity in the United States: Results from the national comorbidity survey replication. *Pain*. 2005; 113:331–339. [PubMed: 15661441]
85. Vranceanu AM, Jupiter JB, Mudgal CS, Ring D. Predictors of pain intensity and disability after minor hand surgery. *J Hand Surg Am*. 2010; 35:956–960. [PubMed: 20381981]
86. Waddell, G. The Epidemiology of Back Pain. In: Livingstone, C., editor. *The Back Pain Revolution*. 2. Elsevier Limited; Edinburg: 2004. p. 41-91.
87. Waddell G, Newton M, Henderson I, Somerville D, Main CJA. Fear-Avoidance Beliefs Questionnaire (FABQ) and the role of fear-avoidance beliefs in chronic low back pain and disability. *Pain*. 1993; 52:157–168. [PubMed: 8455963]

88. Walker LS, Greene JW. The functional disability inventory: Measuring a neglected dimension of child health status. *J Pediatr Psychol.* 1991; 16:39–58. [PubMed: 1826329]
89. Wilson AC, Lewandowski AS, Palermo TM. Fear-avoidance beliefs and parental responses to pain in adolescents with chronic pain. *Pain Res Manag.* 2011; 16:178–182. [PubMed: 21766067]
90. Wilson, DB. [Accessed May 24, 2012] Meta-analysis macros for SAS, SPSS, and Stata. Available at: <http://mason.gmu.edu/~dwilsonb.ma.html>

Perspective

Results of this meta-analysis indicate a robust, positive association between pain-related fear and disability, which can be classified as moderate-large in magnitude. Consistent with the fear-avoidance model of chronic pain, these findings suggest that pain-related fear may be an important target for treatments intended to reduce pain-related disability.

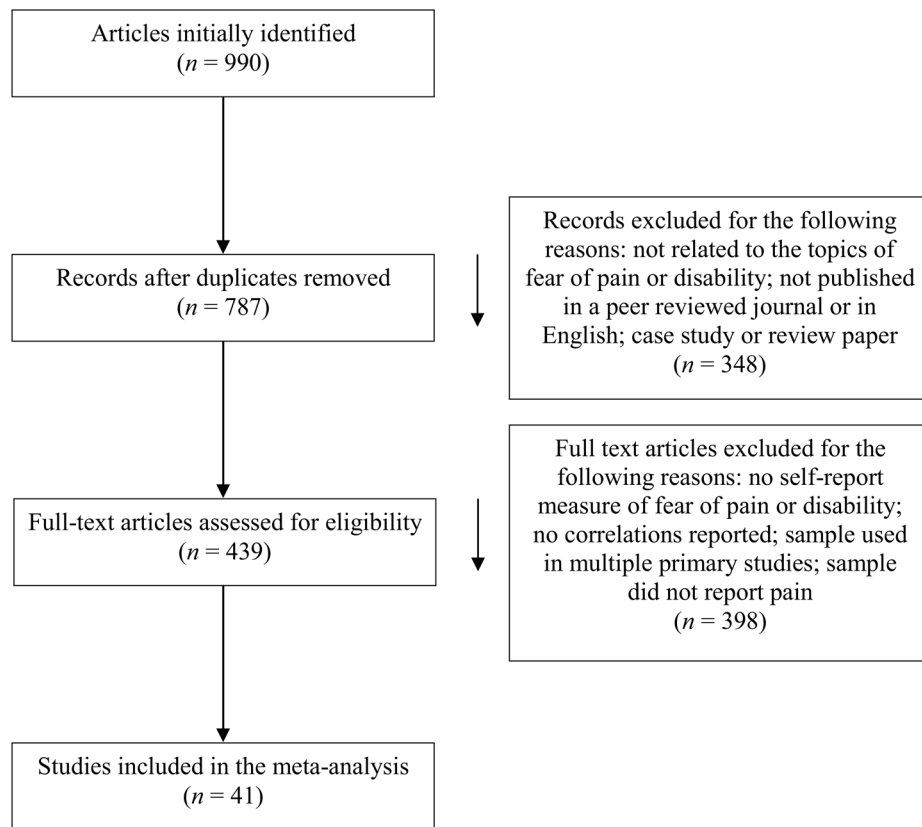


Figure 1.
Study selection process.

Table 1**Self-Report Measures of Pain-Related Fear and Disability**

Measure	Domains Assessed
Pain-Related Fear	
FABQ ⁸⁷	Belief that pain will be caused or made worse by work or physical activity, avoidance of work and physical activity
FOPQ ⁶⁵	Fear of experiencing pain, avoidance of activity
PASS ⁴⁷	Fear of experiencing pain and symptoms of anxiety, avoidance of activity
PFAcTS-C ⁷⁵	Fear of performing movements and activities that may be associated with neck pain
TSK ⁴⁹	Focus on somatic complaints, interpretations of pain as serious injury, fear of injury due to movement and physical activity
Disability	
BPI ⁸	General measure; pain-related interference with work, social relations, physical activity, mood, sleep, and enjoyment of life
CALI ⁵²	General measure; difficulty performing physical, social, school-related, work-related, and recreational activities in children and adolescents
DASH ²⁹	Specific to arm, shoulder and hand pain; difficulty performing physical activities, pain-related interference with sleep, work, social functioning and self-image, severity of physical symptoms (e.g., pain, tingling, stiffness)
DRI ⁶²	Specific to neck, shoulder, and low-back pain; difficulty performing daily, work-related, and physical activities
FDI ⁸⁸	General measure; difficulty performing daily, physical, and social activities
NDI ⁸⁰	Specific to neck pain; pain intensity, pain-related interference with self-care, lifting, work, concentration, driving, reading, sleeping, headaches, recreation
ODI ¹⁹	Specific to low-back pain; pain intensity, pain-related interference with self-care, lifting, walking, sitting, standing, sexual activity, social functioning, traveling
PDI ⁵⁶	General measure; interference with family/home responsibilities, recreation, social activities, occupation, sexual behavior, self-care, life-support activities
QBPDS ³⁷	Specific to back pain; pain-related interference with sleep, walking, lifting, self-care
RMDQ ⁵⁹	Specific to low-back pain; pain-related interference with self-care, work, physical activity/movement, mood
SPADI ⁵⁷	Specific to shoulder pain; difficulty performing self-care and daily activities

NOTE. FABQ = Fear-Avoidance Beliefs Questionnaire; FOPQ = Fear of Pain Questionnaire; PASS = Pain Anxiety Symptoms Scale; PFAcTS-C = Pictorial Fear of Activity Scale -Cervical; TSK = Tampa Scale for Kinesiophobia; BPI = Brief Pain Inventory; CALI = Child Activities Limitations Interview; DASH = Disability of the Arm, Shoulder, and Hand Questionnaire; DRI = Disability Rating Index; FDI = Functional Disability Inventory; NDI = Neck Disability Index; ODI = Oswestry Disability Index; PDI = Pain Disability Index; QBPDS = Quebec Back Pain Disability Scale; RMDQ = Rolland-Morris Disability

Questionnaire; SPADI = Shoulder Pain and Disability Index.

Table 2**Reliability Artifact Distributions for Predictor and Criterion Variables**

Variable	<i>SD</i>	<i>N</i>	<i>k</i>
Predictor – Pain-Related Fear			
All Measures	.83	.09	2729 13
FABQ	.90	.07	113 2
FABQ-W	.91	.09	113 2
FABQ-PA	.75	.25	113 2
TSK	.79	.08	2433 12
PASS	.92	-	31 1
FOPQ	.96	-	296 1
Criterion - Disability			
All Measures	.88	.05	3091 13
RMDQ	.84	.04	681 3
PDI	.87	.04	1911 5
QBPDS	.94	.04	1111 3
NDI	.87	-	94 1
BPI	.90	-	104 1

NOTE. = reliability artifact distribution mean, *SD* = reliability artifact distribution standard deviation; *N* = reliability artifact distribution sample size; *k* = number of samples from which the reliability artifact distribution was derived; FABQ = Fear Avoidance Beliefs Questionnaire; FABQ-W = Work subscale of the FABQ; FABQ-PA = Physical Activity subscale of the FABQ; TSK = Tampa Scale of Kinesophobia; PASS = Pain Anxiety Symptoms Scale; FOPQ = Fear of Pain Questionnaire; NDI = Neck disability Index; PDI = Pain Disability Index; QBPDS = Quebec Back Pain Disability Scale; RMDQ = Roland Morris Disability Questionnaire; BPI = Brief Pain Inventory. Reliability coefficients were not provided for the Pictorial fear of activities scale-Cervical, Functional Disability Index, Shoulder Pain and Disability Index, Disability Rating Index, Child Activities Limitations Interview, and Disability of the Arm, Shoulder, and Hand Questionnaire.

Table 3

Summary of Information Coded from Adult and Pediatric Samples

Reference	N	Measures		R _{xy}	x	y	Demographics		Pain Characteristics				
		Pain- Related Fear	Disability				Age (M)	% F	Type	< 3 Mo	< 1 yr	Treatment Seeking	Intensity (M) *
Adult Studies													
Ayre & Tyson (2001) ¹	121	FABQ-W; FABQ-PA	QBPDS	.43	--	--	39.42	35.54	LBP	Yes	Yes	No	5.45
Boersma & Linton (2006) ²	141	TSK activity; TSK somatic	RMDQ	.43	--	--	47.70	80.15	Other	No	No	Yes	4.50
Calley et al. (2010) ⁵	80	FABQ-W; FABQ-PA; TSK	ODI	.48	--	--	46.60	57.50	LBP	No	No	Yes	3.70
Chaory et al. (2004) ⁷													
Sample 1	147	FABQ-W; FABQ-PA	QBPDS	.37	--	--	45.30	--	LBP	No	No	Yes	33.10
Sample 2	70	FABQ-W; FABQ-PA	QBPDS	.05	--	--	42.50	--	LBP	No	No	Yes	48.60
Cleland et al. (2008) ⁹	78	FABQ-W; FABQ-PA; TSK-17; TSK-13	NDI	-.09	.97	--	42.00	67.95	Other	No	No	Yes	4.70
Cook et al. (2006) ¹²	469	TSK avoidance; TSK harm	PDI	.43	.84	.86	46.30	63.97	Other	--	--	Yes	72.30
Coudeyre et al. (2007) ¹³	2727	FABQ-W; FABQ-PA	QBPDS	.43	--	--	44.00	43.34	LBP	No	--	No	6.80
Crombez et al. (1999) ¹⁴													
Sample 1	35	FABQ-W; FABW-PA; TSK-13	RMDQ	.68	.89	.85	36.10	68.57	Other	No	No	Yes	61.70
Sample 2	31	TSK; PASS	RMDQ	.34	.92	.80	41.61	51.61	Other	No	No	Yes	56.80
Denison & Lindberg (2004) ¹⁷													
Sample 1	210	TSK	PDI	.47	.74	.85	45.00	75.71	Other	No	No	Yes	4.80
Sample 2	161	TSK	PDI	.53	.83	.86	47.00	64.60	Other	No	No	Yes	6.00
French et al. (2007) ²¹	200	FABQ-W; FABQ-PA; TSK	QBPDS	.35	.84	--	40.00	54.00	Other	--	--	Yes	5.20
Fritz et al. (2001) ²²	78	FABQ-W; FABQ-PA	ODI	.42	--	--	37.40	38.46	LBP	Yes	Yes	Yes	--
Gauthier et al. (2006) ²⁴	255	TSK	PDI	.41	.77	--	41.40	46.67	Other	--	--	Yes	--
Gheldof et al. (2006) ²⁵	890	TSK	QBPDQ; PDI	.54	--	.98	39.52	12.47	Other	--	--	No	2.96

Reference	N	Measures		R _{xy}	Demographics			Pain Characteristics					
		Pain- Related Fear	Disability		x	y	Age (M)	% F	Type	< 3 Mo	< 1 yr	Treatment Seeking	Intensity (M)*
Grotle et al. (2004) ²⁷													
Sample 1	123	FABQ-W; FABQ-PA	ODI	.24	--	--	37.80	55.28	LBP	Yes	Yes	No	47.70
Sample 2	233	FABQ-W; FABQ-PA	ODI	.33	--	--	42.00	54.51	LBP	No	No	Yes	59.20
Grotle et al. (2012) ²⁶	87	FABQ-PA	ODI; DRI	.35	--	--	34.40	100	Other	No	No	No	49.50
Huis in 't Veld et al. (2007) ³⁰	58	FABQ-W; FABQ-PA; mFABQ; mTSK-17	NDI	.41	--	--	49.34	100	Other	No	No	No	--
Kall (2009) ³³	47	TSK	PDI	.50	--	--	31.00	63.93	Other	Yes	Yes	Yes	46.30
Koho et al. (2001) ³⁶	51	TSK-17	ODQ	.36	--	--	44.60	52.94	Other	No	No	Yes	70.60
Kovacs et al. (2006) ³⁹	209	FABQ-W; FABQ-PA; FABQ	RMDQ	.51	.93	--	45.70	57.89	LBP	Yes	Yes	Yes	6.20
Kovacs et al. (2007) ³⁸	439	FABQ-PA	RMDQ	.46	--	--	80.40	64.92	LBP	No	--	Yes	5.20
Lewis et al. (2012) ⁴²	47	TSK; PASS-20	RMDQ	.52	--	--	46.20	61.70	LBP	--	--	Yes	4.80
McCracken et al. (1996) ⁴⁶	45	FABQ-W; FABQ-PA; FABQ	PDI	.46	--	--	46.30	53.33	Other	No	No	Yes	--
Meyer et al. (2009) ⁴⁸	78	FABQ-W; FABQ-PA	RMDQ	.68	--	--	50.00	66.67	LBP	No	No	Yes	5.30
Mintken et al. (2010) ⁵⁰	80	FABQ-WB; FABQ-WC; FABQ-PA; TSK-11	SPADI	.33	--	--	41.20	60.00	Other	No	No	Yes	50.80
Pedler & Sterling (2011) ⁵³	96	TSK-17; PFActS-C	NDI	.51	--	--	37.10	62.24	Other	Yes	Yes	No	3.60
Peters et al. (2005) ⁵⁴	100	PASS-20; TSK	QBPDS	.38	--	.90	49.90	56.00	LBP	No	No	Yes	69.00
Samwel et al. (2007) ⁶³	181	TSK	PDI	.42	--	--	48.70	64.09	Other	No	No	Yes	--
Schutze et al. (2010) ⁶⁴	104	TSK	BPI	.44	.83	.90	54.50	68.27	Other	No	Yes	Yes	5.89
Swinkels-Meewissee et al. (2006a) ⁶⁷	93	TSK-17	RMDQ	.43	--	--	44.80	51.61	LBP	Yes	Yes	Yes	40.10
Swinkels-Meewissee et al. (2003 & 2006b) ⁶⁸	615	TSK-17 harm; TSK-17 avoidance; TSK; FABQ-W; FABQ-PA	RMDQ	.36	--	.87	42.65	--	LBP	Yes	Yes	Yes	59.50
2003 ⁶⁹	615	TSK-17 harm; TSK-17 avoidance; TSK	RMDQ	.34	--	.87	42.30	--	LBP	Yes	Yes	Yes	59.50

Reference	N	Measures		R _{xy}	Demographics			Pain Characteristics		
		Pain-Related Fear	Disability		Age (M)	% F	Type	< 3 Mo	< 1 yr	Treatment Seeking
2006 ⁶⁸	615	FABQ-W; FABQ-PA;	RMDQ	.43	43.00	--	LBP	Yes	Yes	Yes
Thomas et al. (2010) ⁷⁰	50	FABQ-W; FABQ-PA; TSK	RMDQ	.61	50.26	30.00	LBP	No	Yes	Yes
Thompson et al. (2010) ⁷¹	94	TSK-17	mNDI	.08	51.10	52.13	Other	No	No	Yes
Valencia et al. (2011) ⁷⁶	108	FABQ-W; FABQ-PA	ODI	.57	37.60	63.89	LBP	No	Yes	Yes
Van den Hout et al. (2011) ⁷⁷	122	FABQ-W; FABQ-PA; TSK	RMDQ	.38	40.00	27.87	LBP	No	No	Yes
Verbunt et al. (2003) ⁷⁸	37	TSK-17	RMDQ	.44	45.20	29.73	LBP	No	No	Yes
Vernon et al. (2011) ⁷⁹	91	TSK-17	NDI	.45	41.70	46.15	Other	No	Yes	Yes
Vluyen et al. (1995) ⁸²	33	TSK-DV	RMDQ	.49	37.40	51.52	LBP	No	No	Yes
Vranceanu et al. (2010) ⁸⁵	120	PASS-20	DASH	.25	61.00	57.50	Other	--	--	Yes
Waddell et al. (1993) ⁸⁷	184	FABQ-W; FABQ-PA	RMDQ activity; RMDQ work loss; RMDQ work loss past year	.39	39.70	44.57	Other	No	No	Yes
Pediatric Studies										
Martin et al. (2007) ⁴⁴	21	PASS-20	FDI	.63	14.24	76.19	Other	--	--	Yes
Simons et al. (2011) ⁶⁵	296	FOPQ-C; FOPQ-FOP; FOPQ-A	FDI	.45	13.80	80.07	Other	No	No	Yes
Wilson et al. (2011) ⁸⁹	42	FABQ-PA	CALI	.42	14.90	73.81	Other	No	Yes	Yes

NOTE. R_{xy} = correlation between pain-related fear and disability; x = reliability of pain-related fear measure; y = reliability of disability measure; % F = percent of sample that were female; < 3 mo = pain lasting less than 3 months; < 1 yr = pain lasting less than 1 year; FABQ = Fear Avoidance Beliefs Questionnaire; TSK = Tampa Scale of Kinesophobia; FABQ-W = Work subscale of the FABQ; FABQ-PA = Physical Activity subscale of the FABQ; PASS-20 = Pain Anxiety Symptom Scale – 20 Item; NDI = Neck disability Index; mNDI = modified Neck Disability Index; ODI = Oswestry Disability Index; PDI = Pain Disability Index; QBPDS = Quebec Back Pain Disability Scale; RMDQ = Roland Morris Disability Questionnaire; CALI = Child Activities Limitations Interview; DASH = Disability of the Arm, Shoulder, and Hand Questionnaire; FOPQ-C = Fear of Pain Questionnaire – Child; FOPQ-FOP = Fear of Pain Questionnaire – Fear of Pain; FOPQ-A = Fear of Pain Questionnaire Avoidance of Activities; PFActS-C = Pictorial Fear of Activities Scale-Cervical; FDI = Functional Disability Index; SPADI = Shoulder Pain and Disability Index; DRI = Disability Rating Index; BPI = Brief Pain Inventory; LBP = lower back pain.

* Pain intensity was measured on numerical rating scales of 0–10 or 0–100. When primary studies reported pain intensity on a 0–10 scale, a linear transformation was used in order to convert all pain ratings to a single metric (0–100).

** Swinkels-Meeswisse et al. (2003)⁶⁹ and Swinkels-Meeswisse et al. (2006b)⁶⁸ contained some overlap in participants, and were therefore treated as multiple groups within the same sample (i.e., information was combined using composite formulas as outlined in the methods).

Table 4
Meta-Analysis Results for the Correlation between Pain-Related Fear and Disability

Model 1 – Random-Effects Method, Correcting for Sampling Error				Model 2 – Artifact Distribution Method, Correcting for Sampling Error and Artifacts						
Predictor	N	k	r	SD _r	% Var ₁	95% CI	SD	% Var ₂	95% CI	80% CV
Pain-Related Fear										
Moderator Analyses										
Pain-Related Fear Measure										
FABQ	5468	21	.42	0.08	43.83	.38 – .45	.49	0.06	.45 – .53	0.44 – .57
TSK	3798	21	.45	0.09	43.55	.41 – .48	.52	0.07	.48 – .57	0.43 – .61
FABQ Subscale										
FABQ-W	5391	20	.31	0.10	27.83	.26 – .35	.36	0.10	.31 – .41	.23 – .49
FABQ- PA	5959	23	.38	0.07	50.91	.35 – .41	.45	0.05	.41 – .48	.38 – .52
Disability Measure										
NDI	325	4	.33	0.24	17.43	.10 – .56	.39	0.25	.11 – .66	.07 – .71
ODI	593	5	.37	0.11	54.23	.27 – .46	.43	0.08	.32 – .54	.33 – .53
PDI	1368	7	.45	0.04	100	--	.52	0	--	--
QBPDs	3487	7	.41	0.06	43.79	.37 – .45	.48	0.04	.43 – .53	.43 – .53
RMDQ	1992	13	.44	0.09	59.19	.39 – .49	.51	0.06	.46 – .57	.44 – .59
Other	837	8	.37	0.13	40.95	.28 – .46	.44	0.11	.33 – .54	.29 – .58
Pain Intensity										
High	5605	18	.43	0.05	75.21	.41 – .46	.50	0.01	.48 – .53	.49 – .52
Low	2746	19	.42	0.16	18.95	.34 – .49	.49	0.16	.40 – .57	.28 – .69
Pain Type										
LBP	5510	20	.42	0.08	43.21	.38 – .45	.49	0.06	.45 – .53	0.41 – .56
Other	4069	26	.43	0.12	30.11	.39 – .48	.51	0.51	.45 – .56	0.36 – .65
Pain Duration – 3 Months										
< 3 months	4958	10	.43	0.09	15.63	.37 – .49	.50	0.09	.44 – .57	.38 – .63
>3 months	3380	29	.41	0.11	48.65	.37 – .45	.48	0.09	.43 – .53	.37 – .59
Pain Duration – 1 Year										
<1 year	5933	17	.44	0.09	24.20	.40 – .48	.51	0.08	.46 – .56	.41 – .62
>1 year	2534	23	.40	0.12	46.24	.35 – .45	.47	0.10	.41 – .53	.35 – .59

			Model 1 – Random-Effects Method, Correcting for Sampling Error				Model 2 – Artifact Distribution Method, Correcting for Sampling Error and Artifacts			
Predictor	N	k	r	SD _r	% Var ₁	95% CI	SD	% Var ₂	95% CI	80% CV
Seeking Pain Treatment										
No	4104	7	.45	0.06	27.71	.40 – .49	.52	44.60	.47 – .58	.45 – .59
Yes	5475	39	.41	0.11	39.14	.37 – .44	.48	43.50	.43 – .52	.35 – .60

NOTE. *r* = mean sample size-weighted correlation; *SD_r* = sample size-weighted observed standard deviation of *r* values; % Var₁ = percent variance attributable to sampling error; CI = confidence interval; = average correlation corrected for artifacts; *SD* = corrected standard deviation of corrected correlations; % Var₂ = percent variance attributable to sampling error and artifacts; LBP = low-back pain CV = credibility interval; FABQ = Fear Avoidance Beliefs Questionnaire; TSK = Tampa Scale of Kinesophobia; FABQ-W = Work subscale of the FABQ; FABQ-PA = Physical Activity subscale of the FABQ; NDI = Neck disability Index; ODI = Oswestry Disability Index; PDI = Pain Disability Index; QBPDS = Quebec Back Pain Disability Scale; RMDQ = Roland Morris Disability Questionnaire; LBP = lower back pain.