

Published in final edited form as:

J Subst Abuse Treat. 2008 June ; 34(4): 426–432.

An Algorithm for Choosing Among Smoking Cessation Treatments

John Hughes, M.D

University of Vermont, Burlington, VT

Abstract

Currently, there are nine validated medications, four validated psychosocial strategies and three validated ways to deliver psychosocial treatment for smoking cessation. This paper presents an algorithm based on a literature review and the author's clinical experience. The algorithm integrates the recommendations of the major guidelines and meta-analyses and provides rationales for its treatment decisions. The algorithm suggests a brief assessment followed by use of 1–2 medications and counseling in most smokers. Because all treatments appear equally effective and have few adverse events, the algorithm suggests clinicians inform smokers of the pros and cons of the different treatments, and recommend use of one or more of each. If a smoker fails to quit, the algorithm suggests an assessment of why relapse occurred, and then a more intense and/or new treatment.

Keywords

adaptive treatment; algorithm; smoking; smoking cessation; tobacco use disorder

Introduction

Several consensus books, guidelines, monographs, websites and review articles have presented concrete recommendations on which therapies should be used to help smokers stop (Abrams et al., 2003; Bittoun, 2006; Fiore et al., 2000; Hughes, 1994; Kleber et al., 2006; McEwen et al., 2006; Rigotti, 2002; Sutherland, 2002; West et al., 2000) (www.treatobacco.net). The current review adds to this literature in two ways. First, it presents an algorithm or flow chart of treatment decisions. Algorithms, decision trees or adaptive treatment strategies can be useful because they a) clarify decision rules, b) clearly indicate how to integrate different treatments and c) provide a single visual overview of a comprehensive program (www.ipap.org) (Murphy et al., in press). Second, most prior reviews have focused on recommendations based on the consensus of several randomized controlled trial (RCTs). In contrast, many of the common decisions necessary in treatment smoking are unlikely to ever be tested in RCTs (Norcross et al., 2006). In addition, RCTs rarely address aspects of treatment delivery other than efficacy; timeliness, and efficiency. (Institute of Medicine, 2001) Thus, this algorithm uses an “evidence-based” approach; i.e., “the integration of best research evidence with clinical expertise and patient values” (Norcross, Beuther, & Lavant, 2006) and “adaptive treatment strategies”; i.e., “considerations of the ordering of treatments, the timing of changes in treatments, and the use

Correspondence to: John R. Hughes, M.D., Department of Psychiatry, University of Vermont, Ira Allen School, 38 Fletcher Place, Burlington, VT 05401-1419, Phone: (802) 656-9610, Fax: (802) 656-9628, Email: john.hughes@uvm.edu.

Publisher's Disclaimer: This is a PDF file of an unedited manuscript that has been accepted for publication. As a service to our customers we are providing this early version of the manuscript. The manuscript will undergo copyediting, typesetting, and review of the resulting proof before it is published in its final citable form. Please note that during the production process errors may be discovered which could affect the content, and all legal disclaimers that apply to the journal pertain.

of response, burden and adherence to make further treatment decisions.” (Murphy et al., in press).

The algorithm is intended for clinicians who provide advice about cessation strategies and treatment methods. The algorithm focuses solely on choosing among treatments; i.e., it does not describe the details of how to provide the treatment in an optimal manner. For this type of information, the reader is referred to recent textbooks (Abrams et al., 2003; McEwen, Hajek, McRobbie, & West, 2006) and guidelines (Fiore et al., 2000; Kleber et al., 2006; West et al., 2000). The algorithm does not cover “special populations” such as adolescents, (Sussman et al., 2006) pregnant smokers, (Lumley et al., 2004) those with mental disorders, (Williams et al., 2004) or use of inpatient treatments (Gastfriend, 2003; Hurt et al., 1992). The algorithm also attempts to include core proposed values of optimal health care; i.e., patient control, continuous healing relationships, customization based on patient needs and values, and timeliness. (Institute of Medicine, 2001)

Methods

The author searched PubMed, PsychInfo and the Smoking and Health Library (<http://apps.nccd.cdc.gov/shrl/>) for books, guidelines, algorithms, meta-analyses, systematic reviews and narrative reviews since 1994 - the date of the prior algorithm by the author (Hughes, 1994). Several search strategies were used but the one that was most successful searched for review articles and meta-analyses, and crossed (tobacco OR nicotine OR cig* OR smok*) AND (cessation OR treatment OR therap* OR algorithm OR guideline). These searches resulted in 1242 non-redundant sources. The titles and abstracts of these suggested 129 were likely to have applicable information and these were read.

Many of these reviews referenced three influential sources: the Cochrane Database of Systematic Reviews on various aspects of smoking cessation treatment (Cochrane Collaboration, 2007), the USPHS meta-analyses and guidelines (Fiore et al., 2000) and the update of the United Kingdom (UK) guidelines (West et al., 2000). For brevity, this article cites only these three sources when appropriate. If none of these makes a recommendation on a decision, other empirical data are cited. As recommended for making evidence based decision, this algorithm used not only empirical data but also the author’s clinical expertise and patient values (Norcross, et al. 2006).

Initial Decisions

The algorithm assumes a smoker has declared he/she wishes to set a quit date in the near future or not (Figure). If not, the algorithm suggests he/she enter a separate algorithm (not covered herein) in which the smoker receives a motivational intervention based either on stages of change (SOC) (Velicer et al., 2006), motivational interviewing (Rubak et al., 2005), the USPHS 5 R’s (Fiore et al., 2000), reduction-in-smoking (Hughes et al., 2006), presentation of treatment options, or other models.

If a smoker does want to quit, he/she should be advised to use counseling and, if a daily smoker, 1–2 medications (Abrams et al., 2003; Fiore et al., 2000; McEwen, Hajek, McRobbie, & West, 2006; West et al., 2000). In contrast, one could use a stepped-care algorithm in which smokers are given minimal treatment first, since many smokers will stop with such treatment (Abrams et al., 2003). The current algorithm does not endorse stepped care for several reasons. First, the major determinant of a tobacco-related illness is the duration of smoking (Peto et al., 2000). Often smokers who fail to quit wait years to try again (National Cancer Institute, 2000) and during that time an irreversible smoking-related event may occur; thus, it is not only important to quit but to quit early on in the smoking career. Having to try to stop on several occasions before being offered optimal care in such a situation does not make sense. In addition,

smoking cessation is the most important outcome to increase health in the developing countries (Department of Health and Human Services, 2004) and treatment clearly reduces morbidity and mortality (Raw, McNeill, & West, 1998). Finally, the more intensive the smoking cessation treatment the greater its efficacy (Fiore et al., 2000; Watkins et al., 2000). In many areas of medicine the optimal, the most intensive treatment occurs with the first treatment encounter. Given the above, this should also be the case for smoking cessation.

One could also use a treatment-matching algorithm (Abrams et al., 2003); however, treatment-matching has not been validated in smoking studies (Cochrane Collaboration, 2007; Fiore et al., 2000; Niaura et al., 2002; West et al., 2000). Although there is a plethora of variables known to predict which smokers will vs. will not stop smoking (US Department of Health and Human Services, 1990), which variables predict who will need treatment and if so, which treatment, to have a good chance of quitting is unknown. On the other hand, there are many areas of medicine in which clinicians tailor treatment in the absence of RCTs conforming the tailoring.

Assessment

Although several assessments have been suggested to aid in choosing treatments for smokers (Abrams et al., 2003; McEwen, Hajek, McRobbie, & West, 2006), only a few have a high chance of changing treatment choices. First, the smoker's prior quitting history should be reviewed (Abrams et al., 2003; Fiore et al., 2000; McEwen, Hajek, McRobbie, & West, 2006; West et al., 2000). The perceived reasons for prior failure and perceived barriers to attempting to stop, and to remaining abstinent should be reviewed. If the smoker states craving and withdrawal symptoms early on prevented abstinence, then the use of medications should be encouraged. If the smoker states that a stressful event several weeks after quitting caused relapse, then a discussion of alternate coping methods and of increasing the response cost to obtain cigarettes should be discussed. If weight gain undermined relapse, then use of medications for the initial period of abstinence should be encouraged because (except for varenicline) they reduce post-cessation weight gain. Prior treatments should also be reviewed for their perceived efficacy, compliance, and adverse events. This assessment should include the duration and daily dose of medication and the number of psychosocial sessions in prior treatments. If the smoker used an adequate dose of the treatment and found it unhelpful, a different treatment should be used. If the treatment was somewhat helpful but the smoker did not persist, then brainstorming ways to improve compliance is indicated. If the prior treatment was helpful (e.g. patch reduced craving) but the smoker relapsed for a reason not addressed with the treatment (e.g., relapsed during alcohol binge), then the treatment should be repeated and a new treatment added.

Second, whether the smoker wishes to quit abruptly or gradually (e.g., by decreasing cigs/day by 25%/wk over 3 wks before the quit day) should be determined. Meta-analyses, guidelines, treatment programs and regulatory agencies vary widely in whether they include gradual cessation as a valid option (Fiore et al., 2000; West et al., 2000). Currently, gradual cessation aided by nicotine replacement therapy (NRT) is approved by regulatory agencies in some countries but not others. This algorithm recommends allowing gradual cessation for smokers who wish to stop gradually because a) there are several rationales for why gradual cessation prior to the quit date should be effective; e.g. increased self-efficacy and decreased nicotine dependence (Cinciripini et al., 1997), b) the more-rigorous RCTs have found gradual as effective as abrupt cessation (Cinciripini et al., 1997), and c) RCTs of using NRT to reduce before quitting find this increases quit rates (Hughes et al., 2006) and does not cause adverse events (AEs) (Fagerstrom et al., 2002).

Third, whether smokers are daily smokers and, if so, the number of cigarettes/day should be determined. Non-daily smokers are less likely to be nicotine dependent (Okuyemi et al.,

2002) and; thus, less likely to benefit from medications. Many studies have shown those who smoke ≥ 10 cigs/day benefit from medications (Cochrane Collaboration, 2007; Fiore et al., 2000; West et al., 2000). One study of those smoking 1–10 cigs daily indicated they are likely to benefit from meds (Shiffman, 2005).

Fourth, the presence of current or past psychiatric/drug symptoms/problems should be determined. Those with active psychiatric symptoms or non-nicotine drug problems appear to be unlikely to quit unless these problems are treated prior to or along with the quit attempt (Hughes et al., 2005). Also, those with a past history of alcohol/psychiatric problems who abstain may be at greater risk for a re-occurrence of these problems and, thus, require greater monitoring a prophylactic treatment (Hughes, 2006; Kalman et al., 2005).

Choosing Among Medications

Seven medications help smokers stop and are first-line medications: bupropion, nicotine gum, inhaler, lozenge/microtab, nasal spray and patch, and varenicline (Cochrane Collaboration, 2007; Fiore et al., 2000; West et al., 2000). Two other medications have efficacy but are classified as second line due to the likelihood of increased AEs (clonidine and nortriptyline). All first line medications appear to be of similar efficacy; none have significant AEs; and there is no validated treatment matching program to choose among medications (except for choosing higher doses for heavier smokers) (Cochrane Collaboration, 2007; Fiore et al., 2000; West et al., 2000). Thus, the algorithm calls for clinicians to first assess for precautions for each of the medications (Zapawa et al., 2005). If none exist, the clinician should describe the pros and cons of all first line medications (Table) and let the smokers chose the medication. If some precautions exist, then the clinician and patient should weigh the risks of the medication against the probability of success and the relative merit of using alternate medications (Zapawa et al., 2005). Prior success or failure with medication is often a major determinant of medication choice.

The one possible exception to stating that all medications are equally efficacious is that three RCTs have found varenicline produces higher quit rates than bupropion (Keating et al., 2006) (www.cochrane.org). Whether this is sufficient to recommend varenicline over other first line medications is debatable; e.g., no studies have compared varenicline vs. nicotine patch. Given this, the algorithm recommends informing smokers that some evidence suggests varenicline is more effective but whether this is true has not been conclusively proven.

The algorithm also recommends combining medications (Fiore et al., 2000; West et al., 2000). Two types of combined therapy have been recommended. One is to combine nicotine patch with the ad-lib use of a short acting NRT (gum, inhaler, lozenge/microtab, or nasal spray). The patch is used to provide more adequate and stable nicotine levels, and the ad-lib medication to provide emergency relief in risky situations. Another possibility is to combine a nicotine and non-nicotine treatment e.g., combining bupropion or nortriptyline with a NRT; however, the empirical evidence for this combination is less clear (Cochrane Collaboration, 2007). Combining varenicline and a NRT makes less sense as varenicline blocks the effect of nicotine (Keating et al., 2006). Medication can be delivered via specialty clinic, primary care settings and, in some cases, via over-the-counter (OTC) sale. Although more intense medication management improves outcomes (Hall et al., 2004), OTC medications are effective (Hughes et al., 2002).

Choosing Among Psychosocial Treatments

All smokers trying to stop should be encouraged to use as intense a psychosocial treatment as is acceptable. Psychosocial treatments (aka advice, coaching, counseling, psychotherapy) can be categorized by content and format (Cochrane Collaboration, 2007; Fiore et al., 2000; West

et al., 2000). The validated contents are intra-session and extra-session social support and behavioral skills training. Rapid smoking is also a validated treatment but given its poor appeal and possible safety problems, it is considered a second line treatment. Most cessation programs do not specialize in any one content and, thus, smokers cannot usually choose psychosocial treatments by their content.

The validated formats are phone, group and individual in-person treatments (Cochrane Collaboration, 2007; Fiore et al., 2000; West et al., 2000). The pros and cons of these formats are listed in the Table. Whether one content or one format is more efficacious than the other is unclear. There are also some RCTs indicating internet treatments are efficacious (Walter et al., 2006) but given the paucity of data, this is considered a second-line format. Written materials by themselves appear to have little efficacy but may help boost other treatments (Cochrane Collaboration, 2007; Fiore et al., 2000). Combining formats (e.g. phone plus group therapy) typically, but not always, increases outcomes (Fiore et al., 2000).

As with medications, the different contents and formats appear to be of similar efficacy; however, greater time in treatment predicts greater efficacy (Fiore et al., 2000); thus, smokers should be given these as options and encouraged to choose one or more. Prior experience with the treatments will likely be a major determinant of choices.

Psychosocial and medical treatments appear to produce similar efficacy (Cochrane Collaboration, 2007; Fiore et al., 2000; West et al., 2000). Several studies have found that combining medications and psychosocial treatments increases quit rates (Cochrane Collaboration, 2007; Fiore et al., 2000; West et al., 2000). However, psychosocial treatment is not essential for medications to work and should not be a prerequisite for obtaining medication (Cochrane Collaboration, 2007; Fiore et al., 2000; West et al., 2000). Whether psychosocial treatments are available varies widely. Therapists should query local insurance plans, health maintenance organizations, state health departments, voluntary agencies, etc. to determine content and availability of local psychosocial treatments.

Choices After Relapse

Even with the best treatment, most smokers will relapse (Hall et al., 2004). Most smokers who relapse want to try to stop again in the near future (Partin et al., 2006) and there is no evidence for the common notion that smokers who wait before trying to quit again are more successful. The RCTs that explicitly tested re-treatment (aka recycling) of treatment failures found poor results (Partin et al., 2006). However, these studies used a one-time intervention, often used the same treatment that previously failed, and did not tailor the second treatment to the reasons the first treatment failed. In contrast, the three studies with the highest long-term quit rates in the literature were the only studies that continued to see smokers even after they relapsed, continued to motivate them to try to quit again, and tailored further treatments to their needs (Anthonisen et al., 1994; Hall et al., 2004; Hughes et al., 1981). These continued-care programs had much higher abstinence rates (35–50% at ≥ 1 yr follow-ups).

Thus, the algorithm recommends that upon relapse, clinicians estimate the likely reasons for failure (e.g. due to psychosocial stressors, poor treatment compliance, distressing withdrawal symptoms or use of alcohol) and suggest a new quit attempt with a new treatment that is likely to address these reasons. Often, the recommendation will be to increase the intensity of treatment; e.g., moving from telephone to in-person treatment, or from medications alone to combined medications and psychosocial treatment. Other times the recommendation will be to use a new treatment; e.g. a second line medication (Fiore et al., 2000). Sometimes an underlying problem must be addressed before a smoker can stop; e.g., a smoking spouse must be convinced to stop as well. If a smoker has failed despite several rounds of use of validated treatments, a clinician may be tempted to recommend a non-validated treatment, such as

acupuncture, under the rationale that maybe this treatment works for some smokers. The current algorithm suggests a better option is referral to another specialist for a second opinion.

Implementing the Algorithm

Most tobacco smokers who plan to quit have no strong, imminent contingency for abstinence. Most know many smokers who have quit without treatment; thus, they believe they “should” be able to quit without treatment as well and will see treatment use as a marker for weak character, etc. In addition, most smokers will have to pay their own treatment costs. Finally, many smokers have incorrect ideas about the content or effectiveness of treatments. For example, some believe that nicotine medications are as deadly as cigarettes (Cummings et al., 2004) or that telephone counselors will use coercive and guilt-laden statements to try to get them to stop. (Bayer et al., 2006) As a result of these, most smokers will choose the least intensive treatment – in stark contrast to what this algorithm recommends. Telling smokers that using treatment is becoming the norm (i.e., currently over half of all smokers have used a stop-smoking treatment), telling them their insurance carrier or local state health department often can provide free or heavily discounted treatment, and eliciting and combating false beliefs about treatment, can change these misbeliefs. Of course, the latter two require a knowledge of the treatments and their local availability.

Summary

There are nine validated medications, four validated psychosocial contents, and three validated psychosocial formats for smoking cessation. The current algorithm is an attempt to provide a visual representation of a rational method to help clinicians/smokers chose the treatments most likely to be successful for an individual smoker.

The current algorithm is based on empirical evidence but extends this using the author’s clinical expertise and accommodation of patient values. Research is needed to test whether the use of algorithms actually improves outcomes (Murphy et al., in press). Perhaps the first test would be whether specialty care via an algorithm is better than usual care. For example, a RCT could compare smokers who are given OTC medications and a written booklet about treatments vs. smokers who are seen by a trained specialist who follows the enclosed algorithm. The study would compare the number abstinent 6 mo after exposure to the two interventions (e.g., via self report of no smoking in last wk plus biochemical verification). Such a study would be important because the author knows of no RCT showing that specialty care increases quit rates. If such a RCT was positive, it would help persuade organizations to reimburse for specialty care for smoking cessation. Further RCTs could test adaptive treatment strategies which tailor treatment based on initial responses to a treatment (Murphy et al., in press).

Acknowledgements

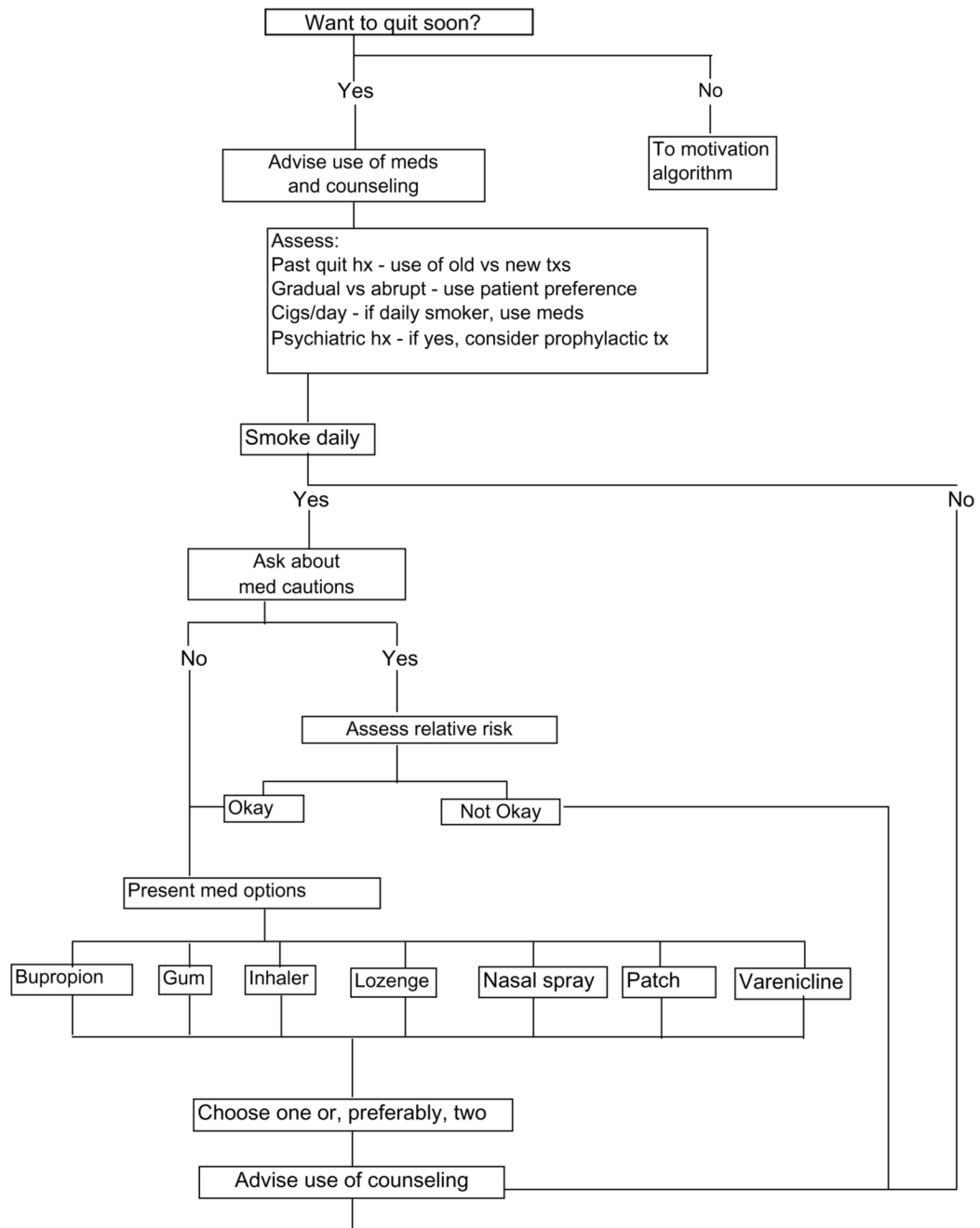
Writing of this article was supported by grants DA11557 and DA17825 and Senior Scientist Award DA00490 from the US National Institute on Drug Abuse.

Reference List

- Abrams, DB.; Niaura, R.; Brown, RA.; Emmons, KM.; Goldstein, MG.; Monti, PM. The Tobacco Dependence Treatment Handbook. A Guide To Best Practices. Barlow, DH., editor. New York, NY: The Guilford Press; 2003.
- Anthonisen NR, Connett JE, Kiley JP, Altose MD, Bailey WC, Buist AS, Conway WA Jr, Enright PL, Kanner RE, O’Hara P, Owens GR, Scanlon PD, Tashkin DP, Wise RA. Effects of smoking intervention and the use of an inhaled anticholinergic bronchodilator on the rate of decline of FEV. *Journal of the American Medical Association* 1994;272:1497–1505.

- Bayer R, Stuber J. Tobacco control, stigma, and public health: Rethinking the relations. *American Journal of Public Health* 2006;96:47–50. [PubMed: 16317199]
- Bittoun R. A combination nicotine replacement therapy (NRT) algorithm for hard-to-treat smokers. *Journal of Smoking Cessation* 2006;1:3–6.
- Cinciripini PM, Wetter DW, McClure JB. Scheduled reduced smoking: effects on smoking abstinence and potential mechanisms of action. *Addictive Behaviors* 1997;22:759–767. [PubMed: 9426793]
- Cochrane Collaboration. The Cochrane Collaboration of Systematic Reviews. Oxford, UK: The Cochrane Collaboration; 2007. www.cochrane.org
- Cummings KM, Hyland A, Giovino GA, Hastrup JL, Bauer JE, Bansal MA. Are smokers adequately informed about the health risks of smoking and medicinal nicotine? *Nicotine and Tobacco Research* 2004;6:S333–S340. [PubMed: 15799596]
- Department of Health and Human Services. The Health Consequences of Smoking. A Report of the Surgeon General. Atlanta, GA: US Office on Smoking and Health; 2004.
- Fagerstrom KO, Hughes JR. Nicotine concentrations with concurrent use of cigarettes and nicotine replacement: A review. *Nicotine and Tobacco Research* 2002;8:S73–S79. [PubMed: 12573169]
- Fiore, MC.; Bailey, WC.; Cohen, SJ.; Dorfman, SF.; Goldstein, MG.; Gritz, ER.; Heyman, RB.; Jaen, CR.; Kottke, T.; Lando, HS.; Mecklenburg, RE.; Mullen, PD.; Nett, LM.; Robinson, L.; Stitzer, ML.; Tommasello, AC.; Villejo, L.; Wewers, ME. Treating Tobacco Use and Dependence. Clinical Practice Guideline. Rockville, MD: U.S. Public Health Service; 2000.
- Gastfriend, DR., editor. Addiction Treatment Matching: Research Foundations of the American Society of Addiction Medicine (ASAM) Criteria. Binghamton: Harworth Medical Press; 2003.
- Hall SM, Humfleet GL, Reus VI, Munoz RF, Cullen J. Extended nortriptyline and psychological treatment for cigarette smoking. *American Journal of Psychiatry* 2004;161:2100–2107. [PubMed: 15514412]
- Hughes GH, Hymowitz N, Ockene JK, Simon N, Vogt TM. The multiple risk factor intervention trial (MRFIT). *Preventive Medicine* 1981;10:476–500. [PubMed: 7027239]
- Hughes JR. Depression during tobacco abstinence. *Nicotine and Tobacco Research* 2006;9:443–446. [PubMed: 17454698]
- Hughes JR, Carpenter MJ. Does smoking reduction increase future cessation and decrease disease risk? A qualitative review. *Nicotine and Tobacco Research* 2006;8:739–749. [PubMed: 17132521]
- Hughes JR, Kalman D. Do smokers with alcohol problems have more difficulty quitting? *Drug and Alcohol Dependence* 2005;82:91–102. [PubMed: 16188401]
- Hughes JR, Shiffman S, Callas P, Zhang J. A meta-analysis of the efficacy of over-the-counter nicotine replacement. *Tobacco Control* 2002;12:21–27. [PubMed: 12612357]
- Hughes JR. An algorithm for smoking cessation. *Archives of Family Medicine* 1994;3:280–285. [PubMed: 8180720]
- Hurt RD, Dale LC, Offord KP, Bruce BK, McClain FL, Eberman KM. Inpatient treatment of severe nicotine dependence. *Mayo Clinic Proceedings* 1992;67:823–828. [PubMed: 1434925]
- Institute of Medicine. Crossing the Quality Chasm. Washington, DC: National Academy Press; 2001.
- Kalman D, Morissette SB, Goerge TP. Co-morbidity of smoking in patients with psychiatric and substance use disorders. *The American Journal on Addictions* 2005;14:106–123. [PubMed: 16019961]
- Keating GM, Siddiqui MA. Varenicline: A review of its use as an aid to smoking cessation therapy. *CNS Drugs* 2006;20:945–960. [PubMed: 17044731]
- Kleber, HD.; Weiss, RD.; Anton, RF., Jr; George, TP.; Greenfield, SF.; Kosten, TR.; O'Brien, CP.; Rounsaville, BJ.; Strain, EC.; Ziedonis, DM.; Hennessy, G.; Connery, HS. Practice Guideline for the Treatment of Patients With Substance Use Disorders. 2. Washington, DC: American Psychiatric Press; 2006.
- Lumley J, Oliver SS, Chamberlain C, Oakley L. Interventions ofr promoting smoking cessation during pregenacy. *Cochrane Database of Systematic Reviews* 2004 Oct 18;:4.
- McEwen, A.; Hajek, P.; McRobbie, H.; West, R. Manual of Smoking Cessation. A Guide for Counsellors and Practitioners. Oxford, UK: Blackwell Publishing; 2006.

- Murphy SA, Lynch KG, Oslin D, McKay JR, TenHave T. Developing adaptive treatment strategies in substance abuse treatment. *Drug and Alcohol Dependence*. in press
- National Cancer Institute. Population Based Smoking Cessation: Proceedings of a Conference on What Works to Influence Cessation in the General Population, Smoking and Tobacco Control Monograph No. 12. Bethesda, MD: US Public Health Service; 2000.
- Niaura R, Abrams DB. Smoking cessation: Progress, priorities, and prospects. *Journal of Consulting and Clinical Psychology* 2002;70:494–509. [PubMed: 12090365]
- Norcross, JC.; Beuther, L.; Lavant, RF. What Qualifies as Evidence: Debate and Dialogue on the Fundamental Questions. Washington, DC: American Psychological Association; 2006.
- Okuyemi KS, Harris KJ, Scheibmeir M, Choi WS, Powell J, Ahluwalia JS. Light smokers: Issues and recommendations. *Nicotine and Tobacco Research* 2002;2:S103–S112. [PubMed: 12573172]
- Partin MR, An LC, Nelson DB, Nugent S, Snyder A, Fu SS, Willenbring ML, Joseph AM. Randomized trial of an intervention to facilitate recycling for relapsed smokers. *American Journal of Preventive Medicine* 2006;31:293–299. [PubMed: 16979453]
- Peto RDS, Deo H, Silcocks P, Whitley E, Doll R. Smoking, smoking cessation, and lung cancer in the UK since 1950: Combination of national statistics with two case-control studies. *British Medical Journal* 2000;321:323–329. [PubMed: 10926586]
- Raw M, McNeill A, West R. Smoking cessation guidelines for health professionals. *Thorax* 1998;53:S1–S38.
- Rigotti NA. Treatment of tobacco use and dependence. *New England Journal of Medicine* 2002;346:506. [PubMed: 11844853]
- Rubak S, Sandbaek A, Lauritzen T, Christensen B. Motivational interviewing: A systematic review and meta-analysis. *British Journal of General Practice* 2005;55:305–312. [PubMed: 15826439]
- Shiffman S. Nicotine lozenge efficacy in light smokers. *Drug and Alcohol Dependence* 2005;77:311–314. [PubMed: 15734231]
- Sussman S, Sun P, Dent CW. A meta-analysis of teen cigarette smoking cessation. *Health Psychology* 2006;25:549–557. [PubMed: 17014271]
- Sutherland G. Current approaches to the management of smoking cessation. *Drugs* 2002;62:53–61. [PubMed: 12109936]
- US Department of Health and Human Services. The Health Benefits of Smoking Cessation. A Report of the US Surgeon General. Rockville, MD: Office on Smoking & Health; 1990.
- Velicer WF, Prochaska JO, Redding CA. Tailored communications for smoking cessation: Past successes and future directions. *Drug and Alcohol Review* 2006;25:49–57. [PubMed: 16492577]
- Walter ST, Wright JA, Shegog R. A review of computer and internet-based interventions for smoking behavior. *Addictive Behaviors* 2006;31:264–277. [PubMed: 15950392]
- Watkins SS, Koob GF, Markou A. Neural mechanisms underlying nicotine addiction: Acute positive reinforcement and withdrawal. *Nicotine and Tobacco Research* 2000;2:19–37. [PubMed: 11072438]
- West R, McNeill A, Raw M. Smoking cessation guidelines for health professionals: An update. *Thorax* 2000;55:987–999. [PubMed: 11083883]
- Williams JM, Ziedonis D. Addressing tobacco among individuals with a mental illness or an addiction. *Addictive Behaviors* 2004;29:1067–1083. [PubMed: 15236808]
- Zapawa LM, Benowitz NL, Dresler C, Fiore MC, Hughes JR, Rigotti NA, Shiffman S. The use of nicotine replacement in special populations: What's a doctor to do? *Journal of General Internal Medicine*. 2005submitted



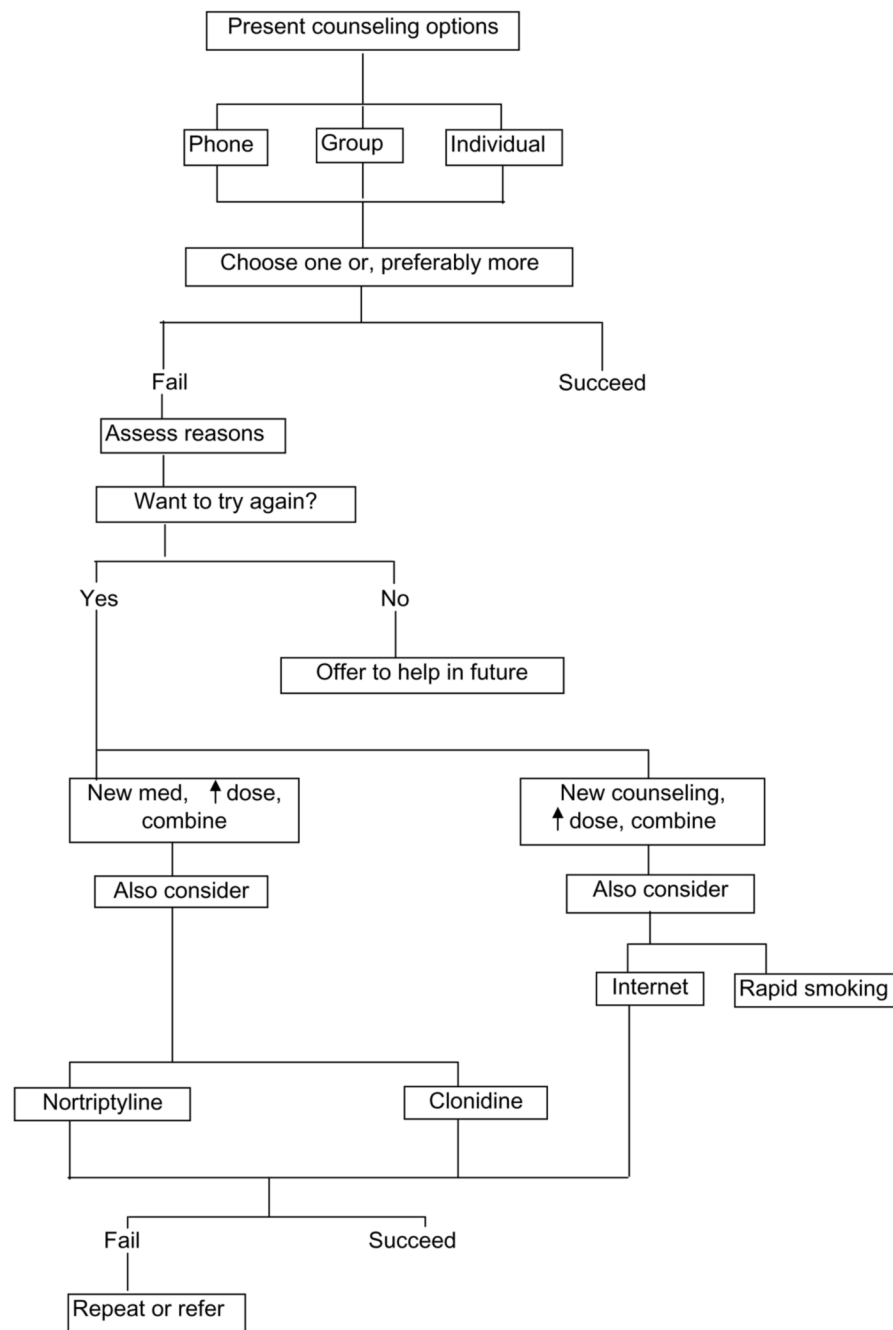


Figure.

An algorithm for assigning treatments to smokers who plan to stop smoking. Cigs = cigarettes, hx = history, med = medication, tx = treatment, ↑ = increase

Table 1**Pros and Cons of Different Treatments**

Treatment	Pros	Cons
First Line Medications		
Bupropion	Non-nicotine, 2x/day pill, used prior to stopping	Some contraindications, requires Rx, no emergency relief, seizure risk
Nicotine gum	OTC, can control dose, use for emergencies	Multiple dosing, poor social acceptability, rare dependence
Nicotine inhaler	Mimics smoking	Multiple dosing, requires Rx, need to puff intensely, low bioavailability at < 10 C
Nicotine lozenge, microtab	OTC, /can control dose, use for emergencies, more acceptable?	Multiple dosing
Nicotine nasal spray	Higher nicotine levels, use for emergencies	Many adverse events
Nicotine patch	OTC, 1x/day, not conspicuous	No emergency relief
Varenicline	Blocks nicotine, used prior to stopping, more effective?	No emergency relief, little effect on weight gain
First Line Psychosocial Treatments		
Group	Social support, advice from other smokers	Scheduling problems, requires disclosure and travel
Individual in-person	Tailored, more intense help	Less social support, often not available
Phone help-line	Confidential, ease of access	Less intense therapy
Second Line Treatments		
Clonidine	Non-nicotine, 1–2x/day	More adverse events
Nortriptyline	Non-nicotine, 1–2x/day	Higher risk for adverse events
Rapid smoking	Efficacious	Poor compliance, more adverse events
Internet programs	Ease of access, able to choose info, tailoring, chat rooms	Less intense, less social support

Figure Caption: Algorithm for choosing among treatments for smoking cessation. C= degrees centigrade, cigs= cigarettes, hx = history, OTC = over-the-counter, Rx = prescription, tx = treatment, x = times