

Published in final edited form as:

Science. 2003 December 5; 302(5651): 1772–1775.

## Yeast Cells Provide Insight into Alpha-Synuclein Biology and Pathobiology

Tiago Fleming Outeiro and Susan Lindquist\*

Whitehead Institute for Biomedical Research, Cambridge, MA 02142, USA.

### Abstract

Alpha-synuclein is implicated in several neurodegenerative disorders, such as Parkinson's disease and multiple system atrophy, yet its functions remain obscure. When expressed in yeast, alpha-synuclein associated with the plasma membrane in a highly selective manner, before forming cytoplasmic inclusions through a concentration-dependent, nucleated process. Alpha-synuclein inhibited phospholipase D, induced lipid droplet accumulation, and affected vesicle trafficking. This readily manipulable system provides an opportunity to dissect the molecular pathways underlying normal alpha-synuclein biology and the pathogenic consequences of its misfolding.

Alpha-synuclein ( $\alpha$ Syn) is abundant and broadly expressed in the brain, where it interacts with membranes, vesicular structures, and a puzzling variety of other proteins (1). Some cases of Parkinson's disease (PD) have a genetic basis (2) that implicates protein folding and quality-control (QC) factors, including a ubiquitin ligase (3) and a ubiquitin C-terminal hydrolase (4, 5), in  $\alpha$ Syn pathology. In mammalian cells  $\alpha$ Syn has been reported in the nucleus, cytosol, associated with membranes and, in diseased brains, in large cytoplasmic inclusions (Lewy bodies) (1). Synucleinopathies are now classified as protein-misfolding disorders (6). Given the strong conservation of protein folding, membrane trafficking, and protein QC mechanisms between yeast and higher eukaryotes, we used *Saccharomyces cerevisiae* to uncover and establish basic aspects of both normal and abnormal  $\alpha$ Syn biology.

To study  $\alpha$ Syn dynamics in living cells, we created an  $\alpha$ Syn-GFP (green fluorescent protein) fusion that was not subject to proteolysis in yeast cells (Fig. 1A) (7) as related fusions have been in mammalian cells (8). Integrating this construct into the genome under the control of a galactose-inducible promoter allowed routine manipulations in the absence of  $\alpha$ Syn expression. Upon induction with galactose, wild-type (WT)  $\alpha$ Syn-GFP localized intensely at the plasma membrane; a smaller quantity accumulated in the cytoplasm (Fig. 1B). Compared with other GFP fusion proteins,  $\alpha$ Syn did not localize to mitochondrial or nuclear membranes (9). Thus, reminiscent of its selectivity for membranes with particular lipid compositions in vitro (10),  $\alpha$ Syn has a high intrinsic selectivity for particular cellular membranes in vivo.

Two  $\alpha$ Syn point mutants (A53T and A30P) are associated with rare forms of early-onset familial PD but have distinct physical properties (11, 12). In yeast, each  $\alpha$ Syn mutant accumulated at the same level as WT  $\alpha$ Syn (Fig. 1A, one copy), but their cellular distributions differed profoundly: Like WT  $\alpha$ Syn, A53T concentrated at the plasma membrane; A30P dispersed throughout the cytoplasm (Fig. 1B, one-copy). The effects of the A30P mutation on

\*To whom correspondence should be addressed. E-mail: lindquist@wi.mit.edu

### Supporting Online Material

www.sciencemag.org/cgi/content/full/302/5651/1772/DC1

*Note added in proof:* Very recently Singleton *et al.* (32) reported that a triplication of the  $\alpha$ Syn locus on one chromosome (presumably doubling the expression of wild-type  $\alpha$ Syn) causes premature onset of PD, strongly supporting our model that a small change in the expression of  $\alpha$ Syn relative to the cell's quality-control systems causes disease-related toxicity.

membrane association in yeast are consistent with its poor membrane-binding capacity in other systems (13, 14).

One hypothesis to explain the late onset of PD (and several other misfolding diseases) is that disease occurs in aging neurons when the capacity of the QC system to cope with accumulating misfolded proteins is exceeded (15, 16). It should be possible to mimic this situation, and exceed the QC system of yeast, by increasing  $\alpha$ Syn expression. Indeed, simply doubling  $\alpha$ Syn expression, by integrating a second copy in the genome, profoundly changed its fate: The vast majority of  $\alpha$ Syn appeared in large cytoplasmic inclusions (Fig. 1B). Notably, inclusions were not formed by excess protein unable to find “docking sites” at the membrane: (i) Much less protein was membrane-localized in two-copy strains than in single-copy strains (Fig. 1B); and (ii) in time courses with two-copy strains,  $\alpha$ Syn first accumulated at the membrane and was later recruited away into cytoplasmic inclusions. The distribution of A53T was similar to that of the WT, but an even smaller fraction associated with membranes. A30P maintained its cytoplasmic distribution (Fig. 1B, two-copies). In vitro, purified  $\alpha$ Syn undergoes nucleated polymerization, A53T having a greater and A30P a lesser propensity to form large polymers than WT  $\alpha$ Syn (17). Our studies demonstrate that the recruitment of  $\alpha$ Syn to inclusion bodies is a biologically relevant property in living cells, where total protein concentrations are very high (~300 mg/ml) and  $\alpha$ Syn concentrations are low (below detection on stained gels) (9).

Under growth conditions used for microscopy, a single-copy of WT or A53T  $\alpha$ Syn had no appreciable effect on growth. Two copies completely inhibited growth (Fig. 1C and fig. S1). A30P inhibited growth only when expressed from a high-copy (2 $\mu$ ) plasmid (Fig. 1C). Curiously, cells were able to grow with 2 $\mu$  plasmids expressing WT and A53T. Further analysis demonstrated that selective pressures had reduced expression by reducing the average copy number of WT and A53T plasmids, confirming the strong concentration dependence of their toxicity (Fig. 1A) (9). In this and all other assays (9) (supporting online material), similar results were obtained with  $\alpha$ Syn constructs not fused to GFP.

At various times after galactose induction, cells were plated on glucose to repress further expression and determine the number of viable cells. The vast majority of cells (~90%) retained colony-forming ability after 12 hours. This lag between  $\alpha$ Syn induction and cell death afforded an opportunity to study the protein's biological effects before toxicity confounded results.

To investigate interactions between  $\alpha$ Syn and the QC system, we first stained cells for ubiquitin, a highly conserved polypeptide that is posttranslationally attached to misfolded proteins to mark them for degradation (18). We used the extrachromosomal plasmids to create mixed populations, perfectly matched for growth and culture conditions but expressing  $\alpha$ Syn at different levels in different cells. Direct visualization of  $\alpha$ Syn-GFP showed the expected diversity of localization patterns from cell to cell (membranes and cytosolic inclusions) (Fig. 1B, 2 $\mu$ ; fig. S2). After fixation and detergent permeabilization (required for immunological detection of ubiquitin), membrane fluorescence was greatly reduced (Fig. 1D; figs. S2 and S3), demonstrating the advantage of direct GFP localization. Nevertheless, the preparations were adequate to unambiguously detect strong accumulation of ubiquitin (Fig. 1D) and establish that it varied with  $\alpha$ Syn expression on a cell-by-cell basis. As in mammalian cells and human brains, some but not all  $\alpha$ Syn aggregates stained with antibodies to ubiquitin (19, 20). Thus, ubiquitylation was neither required for aggregation nor prevented it (Fig. 1D). We also investigated whether accumulating misfolded  $\alpha$ Syn impaired the capacity of the QC system to degrade other proteins. We used an unstable GFP derivative, GFPu, previously established as a reporter for general proteasome activity and  $\alpha$ Syn constructs not fused to GFP (21). All three  $\alpha$ Syn proteins caused GFPu accumulation, indicating proteasome impairment (Fig. 1E).

Next, we examined properties of  $\alpha$ Syn that have been postulated but not directly tested: participation in the regulation of cellular lipid metabolism and vesicle trafficking (22, 23). In a search for inhibitors of phospholipase D (PLD) activity,  $\alpha$ Syn was serendipitously found to potently and selectively inhibit mammalian PLD in vitro (24). To determine if  $\alpha$ Syn inhibits PLD in vivo, we took advantage of a previously established relation between PLD, Sec14p (a phosphatidylinositol-phosphatidylcholine transfer protein), and Cki1p (a choline kinase) (25). When expressed at a level that had no effect in *cki1 $\Delta$*  cells,  $\alpha$ Syn completely blocked growth in *cki1 $\Delta$  sec14ts* double mutants (Fig. 2). This suggested that  $\alpha$ Syn had inhibited endogenous yeast PLD activity. A53T had the same effect; A30P did not. Cells carrying the *sec14ts* mutation alone can grow at 37°C by acquiring any of several “bypass mutations” (26). PLD mutations block the ability of bypass mutations to rescue growth; expression of  $\alpha$ Syn did the same (25, 27) (fig. S4B). Overexpressing PLD (from an extrachromosomal plasmid) restored bypass rescue (fig. S4A), confirming that the effects of  $\alpha$ Syn in these assays were due to the inhibition of PLD. A mutant huntingtin exon-1 fragment with 103 glutamines (Q103 Htt) did not inhibit PLD (fig. S4C). Thus, the serendipitously discovered ability of  $\alpha$ Syn to inhibit PLD in vitro is a specific, highly conserved, and biologically relevant property of the protein in vivo.

$\alpha$ Syn shares biophysical properties with the broadly distributed family of fatty acid-binding proteins, and its oligomerization is affected by lipids in vitro (28, 29). In mammalian cells cultured with lipid-enriched medium,  $\alpha$ Syn accumulates on lipid monolayers surrounding triglyceride-rich lipid droplets and promotes their accumulation by protecting them from hydrolysis (23). We used Nile red, a fluorescent dye that preferentially binds neutral lipids such as triglycerides, to assess the effect of  $\alpha$ Syn on lipid accumulation. Cells expressing WT  $\alpha$ Syn and A53T stained much more strongly than did cells expressing A30P, even in the absence of extrinsic lipids (Fig. 3A, bottom). Electron microscopy established that WT  $\alpha$ Syn and A53T caused the accumulation of discrete lipid droplets; A30P did not (Fig. 3B).

Finally, we tested  $\alpha$ Syn’s effect on the status of vesicular bodies by monitoring internalization of the membrane-binding fluorescent dye FM4-64. As expected, in cells not expressing  $\alpha$ Syn, FM4-64 was rapidly endocytosed and accumulated at the vacuolar membrane (large ringlike structure in Fig. 4, top). In cells expressing any of the three  $\alpha$ Syns (WT, A53T, or A30P), FM4-64 distribution was profoundly affected (Fig. 4, bottom). Again, this was not simply the result of protein aggregation or toxicity: The dye accumulated at the vacuolar membrane in cells expressing low, but similarly toxic levels of an aggregation-prone Q103 Htt (Fig. 4) (supporting online material). Notably, the defect in FM4-64 localization was due neither to PLD inhibition nor to lipid droplet accumulation because, in contrast with other assays with the same plasmids, A30P affected this phenomenon as strongly as WT and A53T did.

Expressing  $\alpha$ Syn and its mutant derivatives in yeast provides a model for studying normal  $\alpha$ Syn function and its misfunction in synucleinopathies. We established that the ability of the protein to inhibit PLD, promote the accumulation of lipids, influence the balance of vesicular pools, associate with membranes in a highly selective manner, induce ubiquitin accumulation, and inhibit the proteasome when misfolded are all intrinsic and biologically relevant properties of the protein that can be uncoupled from each other by the effects of  $\alpha$ Syn mutations. Constructs expressing mutant Q103 Htt did not produce similar biological effects (supporting online material), and unbiased genetic screens confirmed that distinct pathways are involved in  $\alpha$ Syn and Htt toxicities (30). Notably, membrane-bound  $\alpha$ Syn is in dynamic equilibrium with cytoplasmic forms. Just a twofold difference in expression was sufficient to cause a catastrophic change in its behavior, inducing nucleated polymerization and recruiting protein previously associated with membranes to cytoplasmic inclusions. This nucleated polymerization process suggests a mechanism by which even small changes in the QC balance of aging neurons could produce a toxic gain of  $\alpha$ Syn function concomitantly with a loss of

normal function. Thus, two hypotheses [gain of toxic function or loss of normal function (31)] put forward to explain PD can be reconciled by a single molecular mechanism.

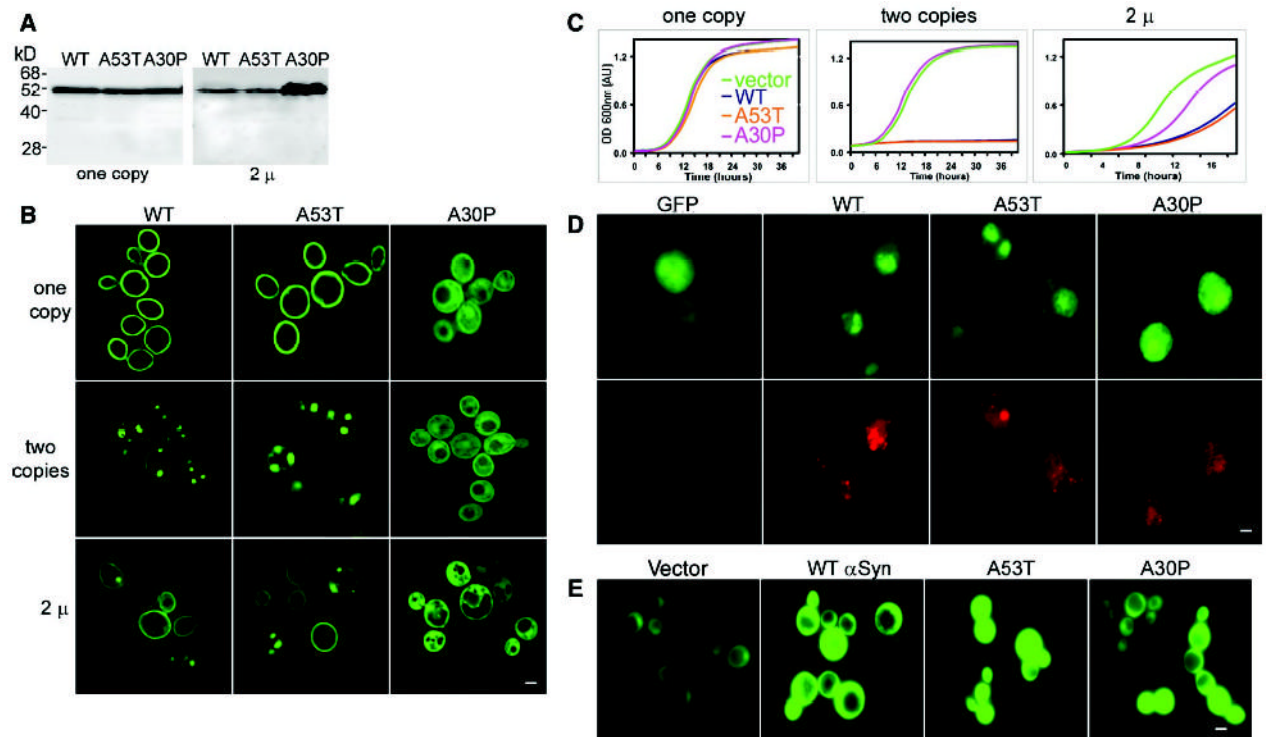
## Supplementary Material

Refer to Web version on PubMed Central for supplementary material.

## References

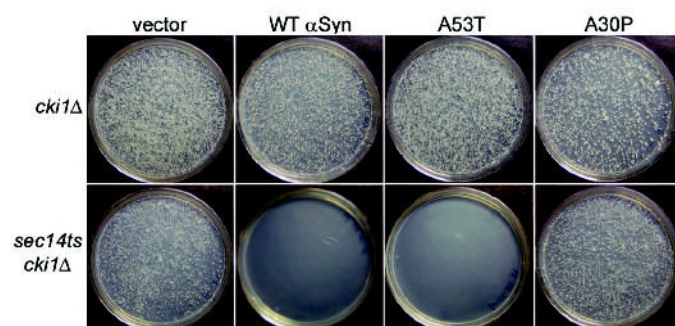
1. Lucking CB, Brice A. Cell Mol Life Sci 2000;57:1894. [PubMed: 11215516]
2. Gasser T. J Neurol 2001;248:833. [PubMed: 11697518]
3. Kitada T, et al. Nature 1998;392:605. [PubMed: 9560156]
4. Leroy E, et al. Nature 1998;395:451. [PubMed: 9774100]
5. Liu Y, Fallon L, Lashuel HA, Liu Z, Lansbury PT Jr. Cell 2002;111:209. [PubMed: 12408865]
6. Muchowski PJ. Neuron 2002;35:9. [PubMed: 12123602]
7. Materials and methods, additional data, and other supporting materials concerning data not shown are available on Science Online.
8. McLean PJ, Kawamata H, Hyman BT. Neuroscience 2001;104:901. [PubMed: 11440819]
9. T. F. Outeiro, S. Lindquist, data not shown.
10. Jo E, McLaurin J, Yip CM, St George-Hyslop P, Fraser PE. J Biol Chem 2000;275:34328. [PubMed: 10915790]
11. Polymeropoulos MH, et al. Science 1997;276:2045. [PubMed: 9197268]
12. Kruger R, et al. Nature Genet 1998;18:106. [PubMed: 9462735]
13. Jo E, Fuller N, Rand RP, St George-Hyslop P, Fraser PE. J Mol Biol 2002;315:799. [PubMed: 11812148]
14. Bussell R Jr, Eliezer D. J Mol Biol 2003;329:763. [PubMed: 12787676]
15. Berke SJ, Paulson HL. Curr Opin Genet Dev 2003;13:253. [PubMed: 12787787]
16. Taylor JP, Hardy J, Fischbeck KH. Science 2002;296:1991. [PubMed: 12065827]
17. Conway KA, et al. Proc Natl Acad Sci USA 2000;97:571. [PubMed: 10639120]
18. Hershko A, Ciechanover A, Varshavsky A. Nature Med 2000;6:1073. [PubMed: 11017125]
19. Stefanis L, Larsen KE, Rideout HJ, Sulzer D, Greene LA. J Neurosci 2001;21:9549. [PubMed: 11739566]
20. Sampathu DM, Giasson BI, Pawlyk AC, Trojanowski JQ, Lee VM. Am J Pathol 2003;163:91. [PubMed: 12819014]
21. Bence NF, Sampat RM, Kopito RR. Science 2001;292:1552. [PubMed: 11375494]
22. Murphy DD, Rueter SM, Trojanowski JQ, Lee VM. J Neurosci 2000;20:3214. [PubMed: 10777786]
23. Cole NB, et al. J Biol Chem 2002;277:6344. [PubMed: 11744721]
24. Jenco JM, Rawlingson A, Daniels B, Morris AJ. Biochemistry 1998;37:4901. [PubMed: 9538008]
25. Bankaitis VA, Aitken JR, Cleves AE, Dowhan W. Nature 1990;347:561. [PubMed: 2215682]
26. Rudge SA, Pettitt TR, Zhou C, Wakelam MJ, Engebrecht JA. Genetics 2001;158:1431. [PubMed: 11514437]
27. Sreenivas A, Patton-Vogt JL, Bruno V, Griac P, Henry SA. J Biol Chem 1998;273:16635. [PubMed: 9642212]
28. Sharon R, et al. Proc Natl Acad Sci USA 2001;98:9110. [PubMed: 11481478]
29. Sharon R, et al. Neuron 2003;37:583. [PubMed: 12597857]
30. Willingham S, Outeiro TF, DeVit MJ, Lindquist SL, Muchowski PJ. Science 2003;302:1769. [PubMed: 14657499]
31. Dawson TM, Dawson VL. J Clin Invest 2003;111:145. [PubMed: 12531866]
32. Singleton AB, et al. Science 2003;302:841. [PubMed: 14593171]
33. This work was funded by NIH/National Institute of Neurological Disorders and Stroke (grant NS044829-01). T.F.O. was partially supported by Programa Prax-is XXI, Fundacao para a Ciencia

e Tecnologia, Portugal. We thank P. Lansbury, R. Esposito, J. Engebrecht, H. Chang, and S. Henry for plasmids and strains and members of the Lindquist laboratory for critical reading of this manuscript.

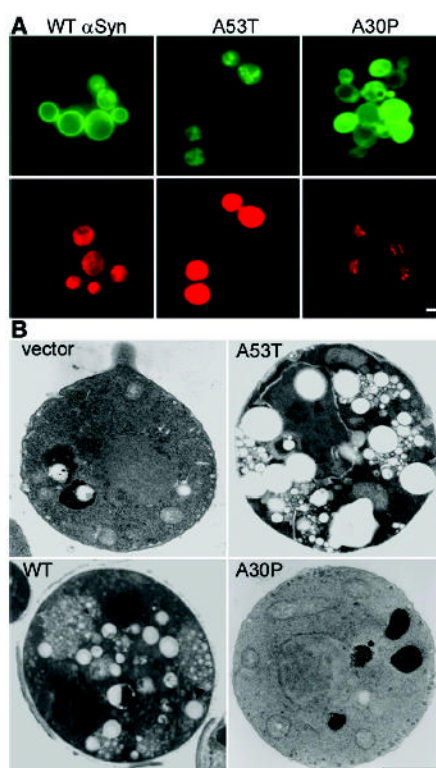
**Fig 1.**

Expression of  $\alpha$ Syn in yeast. **(A)** Immunoblot analysis of cells expressing  $\alpha$ Syn-GFP fusions. Single integrated copies (left) of WT, A53T, and A30P  $\alpha$ Syn produced similar amounts of protein (supporting online material). 2 $\mu$  plasmid (variable copy number) expression levels of WT and A53T were similar but lower than those of A30P  $\alpha$ Syn (right). **(B)** Fluorescence microscopy of yeast cells expressing  $\alpha$ Syn-GFP. In cells carrying one copy of WT or A53T, the protein concentrated at the plasma membrane, and small amounts concentrated in the cytoplasm. Cells with two copies of WT or A53T showed cytoplasmic inclusions and reduced membrane localization. When expressed from the 2 $\mu$  plasmid, WT and A53T distributions varied from cell to cell, whereas A30P showed a diffuse cytoplasmic distribution. **(C)**  $\alpha$ Syn inhibits growth. One copy of  $\alpha$ Syn WT or A53T had little effect on growth (left), whereas two copies completely inhibited it (middle). When expressed from a 2 $\mu$  plasmid, A30P inhibited growth but less so than WT or A53T (right). **(D)** Immunofluorescence of cells expressing  $\alpha$ Syn-GFP (2 $\mu$ ) (top) with an antibody to ubiquitin (bottom) showed increased levels of ubiquitin accumulation in cells expressing  $\alpha$ Syn (WT and both mutants). **(E)** Cells coexpressing  $\alpha$ Syn and GFPu showed accumulation of the reporter when compared to cells carrying an empty vector control. Scale bars, 1  $\mu$ m.



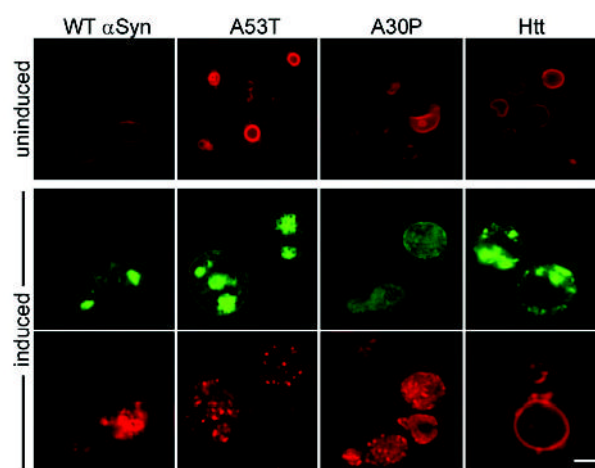


**Fig 2.**  $\alpha$ Syn inhibits PLD. A *cki1* $\Delta$  strain (top) or a *sec14ts cki1* $\Delta$  double-mutant strain (bottom) were transformed with 2 $\mu$  plasmids expressing  $\alpha$ Syn and grown at 37°C (supporting online material). WT and A53T $\alpha$ Syn blocked growth in *sec14ts cki1* $\Delta$  strain, but not in the *cki1* $\Delta$  strain.



**Fig 3.** Cells expressing  $\alpha$ Syn accumulate lipids. (A) Cells expressing either WT or A53T  $\alpha$ Syn-GFP (top) were highly reactive for the lipophilic dye Nile red (bottom); cells expressing A30P were not (supporting online material). (B) Electron microscopy demonstrated the accumulation of lipid droplets (arrowheads) in cells expressing WT or A53T  $\alpha$ Syn but not in cells expressing A30P. Scale bars, 1  $\mu$ m.



**Fig 4.**

$\alpha$ Syn overexpression perturbs the distribution of vesicular pools. Endocytosis of the fluorescent dye FM4-64 (red) was used to monitor the effects of all three  $\alpha$ Syn-GFP variants and of Q103 Htt exon 1 (green) on vesicular trafficking. Cells grown in raffinose (uninduced) show normal ring-like vacuolar staining (top). Expression of  $\alpha$ Syn WT, A53T, and A30P markedly altered FM4-64 distributions (punctate structures in red, bottom). Scale bar, 1  $\mu$ m.